

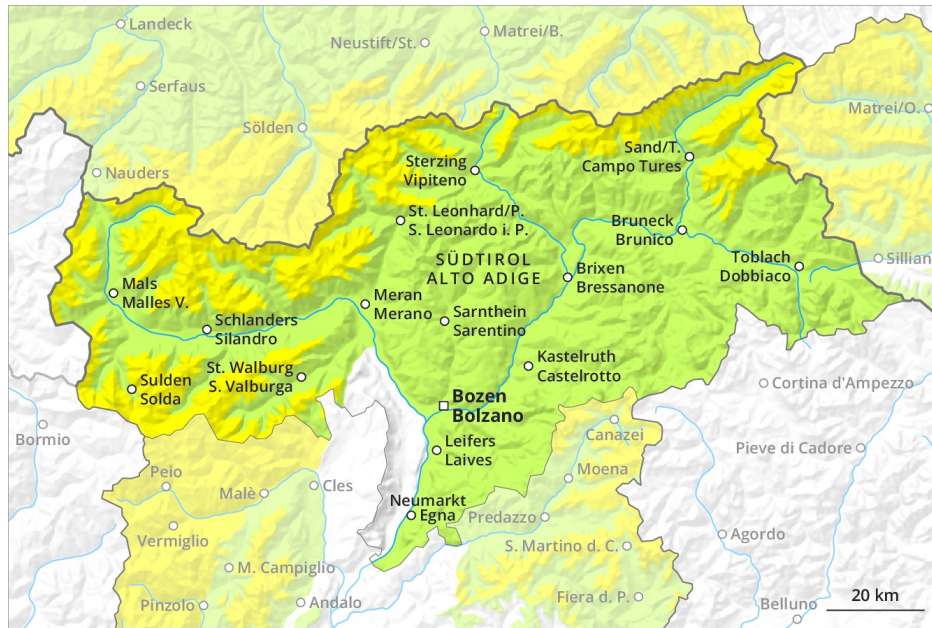
Avalanche Forecast

Thursday 06 12 2018

Published 05 12 2018, 17:00

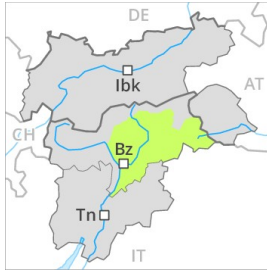


Avalanche.report



Danger level	Characteristics	Recommendations for backcountry recreationists
5 very high	Disaster situation Numerous large and very large natural avalanches can be expected. These can reach roads and settlements in the valley.	You are advised not to engage in winter sports beyond open ski runs and trails.
4 high	Very critical avalanche situation Natural and often large avalanches are likely. Avalanches can easily be triggered on many steep slopes. Remote triggering is typical. Whumpf sounds and shooting cracks occur frequently.	Stay on moderately steep terrain. Heed runout zones of large avalanches. Unexperienced persons should remain on open ski runs and trails. Around 10 % of avalanche fatalities.
3 considerable	Critical avalanche situation Whumpf sounds and shooting cracks are typical. Avalanches can easily be triggered, particularly on steep slopes with the aspect and elevation indicated in the avalanche bulletin. Natural avalanches and remote triggering can occur.	The most critical situation for backcountry recreationists. Select best possible route and take action to reduce risks. Avoid very steep slopes with the aspect and elevation indicated in the avalanche bulletin. Unexperienced persons are advised to remain on open ski runs and trails. Around 50 % of avalanche fatalities.
2 moderate	Mostly favourable avalanche situation Warning signs can occur in isolated cases. Avalanches can be triggered in particular on very steep slopes with the aspect and elevation indicated in the avalanche bulletin. Large natural avalanches are unlikely.	Routes should be selected carefully, especially on slopes with the aspect and elevation indicated in the avalanche bulletin. Travel very steep slopes one person at a time. Pay attention to unfavourable snowpack structure (persistent weak layers, old snow problem). Around 30 % of avalanche fatalities.
1 low	Generally favourable avalanche situation No warning signs present. Avalanches can only be triggered in isolated cases, in particular on extremely steep slopes.	Travel extremely steep slopes one person at a time and be alert to the danger of falling. Around 5 % of avalanche fatalities.

Danger Level 1 - Low



Wind-drifted
snow



Low, level 1.

The avalanche prone locations are to be found in particular on steep northwest to north to northeast facing slopes above approximately 2200 m. Caution is to be exercised in particular adjacent to ridgelines and in pass areas. The wind slabs represent the main danger. These avalanche prone locations are rather rare and are clearly recognisable to the trained eye.

Snowpack

The backcountry touring conditions are unfavourable. Below approximately 2200 m hardly any snow is lying.

Danger Level 2 - Moderate



Wind-drifted
snow



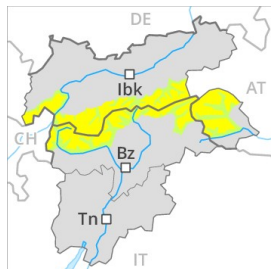
Slab avalanches are possible in isolated cases as before.

The near-surface layers of the snowpack can be released especially by large additional loads in particular adjacent to ridgelines.

Snowpack

The snowpack will be in most cases well bonded. In many cases wind slabs are lying on soft layers. On wind-loaded slopes a moderate danger of dry avalanches will prevail.

Danger Level 2 - Moderate



Tendency: Constant avalanche danger →

on Saturday 08 12 2018



Wind-drifted
snow



Fresh wind slabs in particular adjacent to ridgelines and in gullies and bowls.

As a consequence of the northwesterly wind the wind slabs have increased in size once again. Especially slopes adjacent to ridgelines are critical. These avalanche prone locations are to be found especially in places that are protected from the wind above approximately 2400 m. Winter sport participants can release avalanches in some places, including medium-sized ones. The Avalanche Warning Service currently has only a small amount of information that has been collected in the field, so that the avalanche danger should be investigated especially thoroughly in the relevant locality.

Snowpack

Danger patterns

dp 6: cold, loose snow and wind

The old snowpack will be generally well bonded. Wind slabs are lying on soft layers.

Avalanche Forecast

Thursday 06 12 2018

Published 05 12 2018, 17:00



Avalanche.report

No Rating



Tendency: Constant avalanche danger →
on Saturday 08 12 2018

