

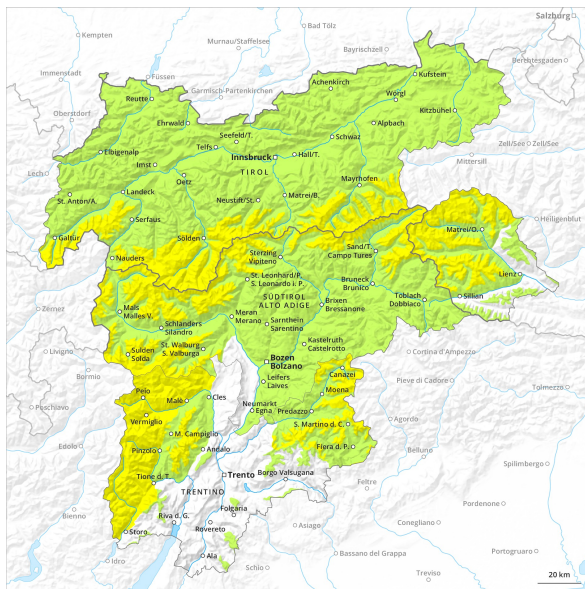
Avalanche Forecast

Thursday 06 12 2018

Published 05 12 2018, 17:00



Avalanche.report

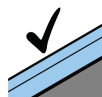


Danger level	Characteristics	Recommendations for backcountry recreationists
5 very high	Disaster situation Numerous large and very large natural avalanches can be expected. These can reach roads and settlements in the valley.	You are advised not to engage in winter sports beyond open ski runs and trails.
4 high	Very critical avalanche situation Natural and often large avalanches are likely. Avalanches can easily be triggered on many steep slopes. Remote triggering is typical. Whumpf sounds and shooting cracks occur frequently.	Stay on moderately steep terrain. Heed runout zones of large avalanches. Unexperienced persons should remain on open ski runs and trails. Around 10 % of avalanche fatalities.
3 considerable	Critical avalanche situation Whumpf sounds and shooting cracks are typical. Avalanches can easily be triggered, particularly on steep slopes with the aspect and elevation indicated in the avalanche bulletin. Natural avalanches and remote triggering can occur.	The most critical situation for backcountry recreationists. Select best possible route and take action to reduce risks. Avoid very steep slopes with the aspect and elevation indicated in the avalanche bulletin. Unexperienced persons are advised to remain on open ski runs and trails. Around 50 % of avalanche fatalities.
2 moderate	Mostly favourable avalanche situation Warning signs can occur in isolated cases. Avalanches can be triggered in particular on very steep slopes with the aspect and elevation indicated in the avalanche bulletin. Large natural avalanches are unlikely.	Routes should be selected carefully, especially on slopes with the aspect and elevation indicated in the avalanche bulletin. Travel very steep slopes one person at a time. Pay attention to unfavourable snowpack structure (persistent weak layers, old snow problem). Around 30 % of avalanche fatalities.
1 low	Generally favourable avalanche situation No warning signs present. Avalanches can only be triggered in isolated cases, in particular on extremely steep slopes.	Travel extremely steep slopes one person at a time and be alert to the danger of falling. Around 5 % of avalanche fatalities.

No Rating



Tendency: Decreasing avalanche danger
on Saturday 08 12 2018



Favourable
situation



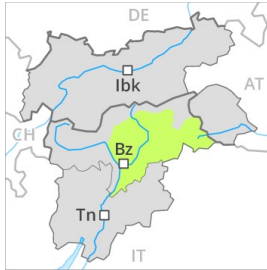
Below approximately 1500 m only a little snow is lying.

Little snow has fallen in some localities.

Snowpack

Below approximately 1500 m only a little snow is lying on north facing slopes.

Danger Level 1 - Low



Wind-drifted
snow



Low, level 1.

The avalanche prone locations are to be found in particular on steep northwest to north to northeast facing slopes above approximately 2200 m. Caution is to be exercised in particular adjacent to ridgelines and in pass areas. The wind slabs represent the main danger. These avalanche prone locations are rather rare and are clearly recognisable to the trained eye.

Snowpack

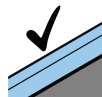
The backcountry touring conditions are unfavourable. Below approximately 2200 m hardly any snow is lying.

Danger Level 1 - Low



Tendency: Constant avalanche danger →

on Saturday 08 12 2018



Favourable situation



The snowpack remains generally well bonded.

The snowpack remains favourable at intermediate altitudes.

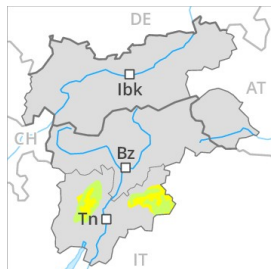
Snowpack

The surface of the snowpack is frozen, but not to a significant depth and will soften during the day.

Tendency

The snowpack will be quite stable.

Danger Level 2 - Moderate



Tendency: Constant avalanche danger →

on Saturday 08 12 2018



Wind-drifted snow



The wind slabs are easy for the trained eye to recognise and to be assessed with care and prudence.

The old snowpack remains in most cases well bonded. In some cases various wind slab layers are lying on the smooth surface of an old snowpack.

Snowpack

Danger patterns

dp 1: deep persistent weak layer

Fresh and older wind slabs represent the main danger.

Tendency

The snowpack remains in most cases favourable.

Danger Level 1 - Low



Tendency: Constant avalanche danger →
on Saturday 08 12 2018



Wind-drifted
snow



From a snow sport perspective, in most cases insufficient snow is lying in all altitude zones. The avalanche conditions are generally favourable.

Currently there are favourable conditions generally. The avalanche prone locations are to be found in particular adjacent to ridgelines in northwest to north to northeast facing aspects above approximately 2500 m. Wind slabs can still in isolated cases be released by large loads. Elsewhere, avalanches can scarcely be released.

Snowpack

Danger patterns

dp 6: cold, loose snow and wind

Over a wide area 10 cm of snow, and up to 20 cm in some localities, fell above approximately 2000 m. In the last few days rather small wind slabs formed in particular adjacent to ridgelines. These have bonded quite well with the old snowpack.

Tendency

Hardly any increase in avalanche danger.

Danger Level 2 - Moderate



Wind-drifted
snow



Slab avalanches are possible in isolated cases as before.

The near-surface layers of the snowpack can be released especially by large additional loads in particular adjacent to ridgelines.

Snowpack

The snowpack will be in most cases well bonded. In many cases wind slabs are lying on soft layers. On wind-loaded slopes a moderate danger of dry avalanches will prevail.

Danger Level 2 - Moderate



Tendency: Constant avalanche danger →
on Saturday 08 12 2018



Wind-drifted
snow



Fresh wind slabs require caution.

The fresh wind slabs are lying on unfavourable layers. The avalanche prone locations are to be found in particular in northwest to north to southeast facing aspects above approximately 2500 m and at transitions from a shallow to a deep snowpack. Winter sport participants can release avalanches in isolated cases, including medium-sized ones. Apart from the danger of being buried, restraint should be exercised as well in view of the danger of avalanches sweeping people along and giving rise to falls. The Avalanche Warning Service currently has only a small amount of information that has been collected in the field, so that the avalanche danger should be investigated especially thoroughly in the relevant locality.

Snowpack

Fresh and older wind slabs are in many cases small and can only be released by large loads in most cases. The old snowpack will be quite well bonded.

Tendency

The conditions are favourable over a wide area.

Danger Level 1 - Low



Tendency: Constant avalanche danger →
on Saturday 08 12 2018



Wind-drifted
snow



From a snow sport perspective, in most cases insufficient snow is lying in all altitude zones. The avalanche conditions are generally favourable.

Currently there are favourable conditions generally. The avalanche prone locations are to be found in particular adjacent to ridgelines in northwest to north to east facing aspects above approximately 2000 m. Wind slabs can in isolated cases be released by large loads. Elsewhere, avalanches can scarcely be released.

Snowpack

Danger patterns

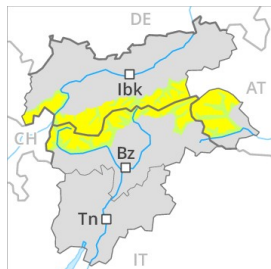
dp 6: cold, loose snow and wind

In the last few days rather small wind slabs formed in particular adjacent to ridgelines. These have bonded quite well with the old snowpack.

Tendency

Hardly any increase in avalanche danger.

Danger Level 2 - Moderate



Tendency: Constant avalanche danger →

on Saturday 08 12 2018



Wind-drifted
snow



2300m

Fresh wind slabs in particular adjacent to ridgelines and in gullies and bowls.

As a consequence of the northwesterly wind the wind slabs have increased in size once again. Especially slopes adjacent to ridgelines are critical. These avalanche prone locations are to be found especially in places that are protected from the wind above approximately 2400 m. Winter sport participants can release avalanches in some places, including medium-sized ones. The Avalanche Warning Service currently has only a small amount of information that has been collected in the field, so that the avalanche danger should be investigated especially thoroughly in the relevant locality.

Snowpack

Danger patterns

dp 6: cold, loose snow and wind

The old snowpack will be generally well bonded. Wind slabs are lying on soft layers.

Danger Level 1 - Low



Tendency: Constant avalanche danger →
on Saturday 08 12 2018



Wind-drifted
snow



Treeline

From a snow sport perspective, in most cases insufficient snow is lying in all altitude zones. The avalanche conditions are generally favourable.

Currently there are favourable conditions generally. The avalanche prone locations are to be found in particular adjacent to ridgelines in northwest to north to northeast facing aspects. Wind slabs can still in isolated cases be released by large loads. Elsewhere, avalanches can scarcely be released.

Snowpack

Danger patterns

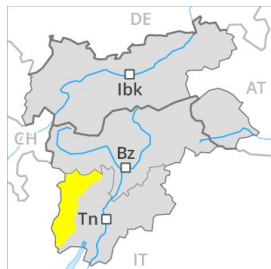
dp 6: cold, loose snow and wind

Over a wide area 10 cm of snow, and up to 20 cm in some localities, fell above approximately 2000 m. In the last few days rather small wind slabs formed in particular adjacent to ridgelines. These have bonded quite well with the old snowpack.

Tendency

Hardly any increase in avalanche danger.

Danger Level 2 - Moderate



Tendency: Constant avalanche danger →
on Saturday 08 12 2018



Wind-drifted
snow



Fresh wind slabs require caution.

The fresh wind slabs are lying on unfavourable layers. The avalanche prone locations are to be found in particular in northwest to north to southeast facing aspects above approximately 2500 m and at transitions from a shallow to a deep snowpack. Winter sport participants can release avalanches in isolated cases, including medium-sized ones. Apart from the danger of being buried, restraint should be exercised as well in view of the danger of avalanches sweeping people along and giving rise to falls. The Avalanche Warning Service currently has only a small amount of information that has been collected in the field, so that the avalanche danger should be investigated especially thoroughly in the relevant locality.

Snowpack

Fresh and older wind slabs are in many cases small and can only be released by large loads in most cases. The old snowpack will be quite well bonded.

Tendency

The conditions are favourable over a wide area.

Avalanche Forecast

Thursday 06 12 2018

Published 05 12 2018, 17:00



Avalanche.report

No Rating



Tendency: Constant avalanche danger →
on Saturday 08 12 2018

