

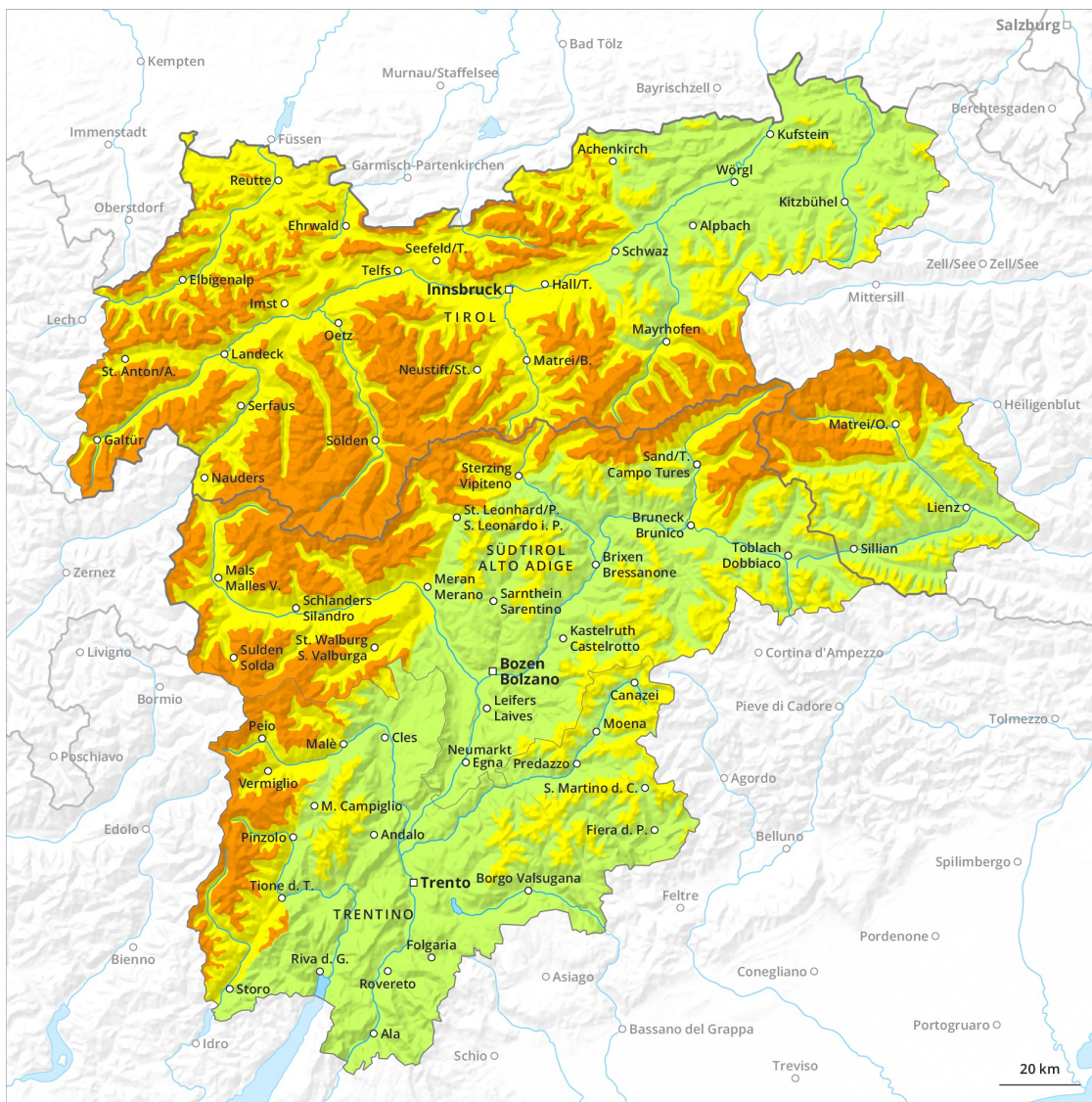
# Avalanche Forecast

## Saturday 08 12 2018

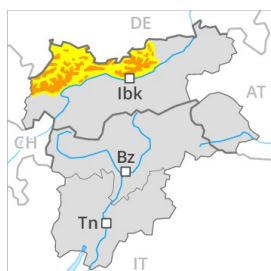
Published 07 12 2018, 17:47



Avalanche.report



## Danger Level 3 - Considerable



**Tendency: Increasing avalanche danger**  
on Sunday 09 12 2018



Wind-drifted  
snow



Treeline



New snow



Treeline

Significant increase in avalanche danger as a consequence of fresh snow and wind.

Significant increase in avalanche danger as a consequence of fresh snow and strong wind. As a consequence of fresh snow and a strong to storm force westerly wind, avalanche prone wind slabs formed during the course of the night in particular adjacent to ridgelines on northwest, north and southeast facing slopes. The fresh snow and wind slabs of Saturday can be released easily, even by a single winter sport participant, above approximately 1800 m.

### Snowpack

**Danger patterns**

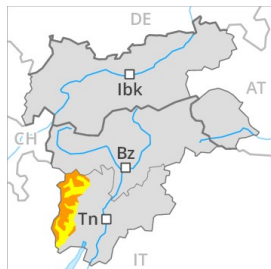
dp 6: cold, loose snow and wind

As a consequence of fresh snow and a strong to storm force westerly wind, avalanche prone wind slabs formed during the course of the night. The extensive wind slabs of Saturday are bonding poorly with the old snowpack in all aspects above approximately 1800 m.

### Tendency

Fresh snow and wind slabs above approximately 1800 m.

## Danger Level 3 - Considerable



**Tendency: Increasing avalanche danger**  
on Sunday 09 12 2018



Wind-drifted  
snow



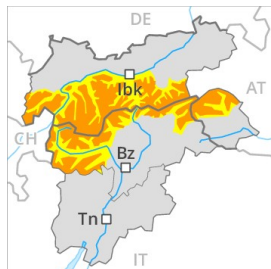
Gradual increase in avalanche danger as a consequence of fresh snow and stormy weather.

By the evening the wind slabs will increase in size substantially. As a consequence of fresh snow and stormy weather natural avalanches are possible as the day progresses, but they can reach medium size. In addition the sometimes fresh snow-covered wind slabs in particular adjacent to ridgelines in all aspects and generally at high altitudes are easily triggered. Backcountry touring and other off-piste activities call for experience in the assessment of avalanche danger and careful route selection.

### Snowpack

In particular along the border with Tirol stormy weather and fresh snow to intermediate altitudes. The backcountry touring conditions are to some extent unfavourable.

## Danger Level 3 - Considerable



**Tendency: Increasing avalanche danger**  
on Sunday 09 12 2018



Wind-drifted  
snow



Gradual increase in avalanche danger as a consequence of fresh snow and stormy weather.

By the evening the wind slabs will increase in size substantially. As a consequence of fresh snow and stormy weather natural avalanches are possible as the day progresses, but they can reach medium size. In addition the sometimes fresh snow-covered wind slabs in particular adjacent to ridgelines in all aspects and generally at high altitudes are easily triggered. Backcountry touring and other off-piste activities call for experience in the assessment of avalanche danger and careful route selection.

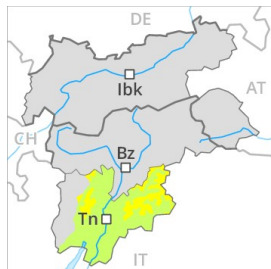
### Snowpack

**Danger patterns**

dp 6: cold, loose snow and wind

In particular along the border with Tirol stormy weather and fresh snow to intermediate altitudes. The backcountry touring conditions are to some extent unfavourable.

## Danger Level 2 - Moderate



**Tendency: Constant avalanche danger** →

on Sunday 09 12 2018



Wind-drifted  
snow



The wind slabs are easy for the trained eye to recognise and to be assessed with care and prudence.

The old snowpack remains in most cases well bonded. In some cases various wind slab layers are lying on the smooth surface of an old snowpack.

### Snowpack

**Danger patterns**

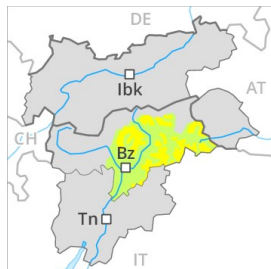
dp 1: deep persistent weak layer

Fresh and older wind slabs represent the main danger. Below approximately 2500 m small and, in isolated cases, medium-sized moist loose snow avalanches are possible.

### Tendency

The snowpack remains in most cases favourable.

## Danger Level 2 - Moderate



**Tendency: Constant avalanche danger** →

on Sunday 09 12 2018



Wind-drifted  
snow



### Fresh wind slabs require caution.

In the last few days mostly small wind slabs formed in particular adjacent to ridgelines as well as at high altitude. These avalanche prone locations are to be found especially in places that are protected from the wind above approximately 2200 m. Winter sport participants can release avalanches in some places, including medium-sized ones. The Avalanche Warning Service currently has only a small amount of information that has been collected in the field, so that the avalanche danger should be investigated especially thoroughly in the relevant locality.

### Snowpack

The old snowpack will be generally well bonded. Wind slabs are lying on soft layers. Below approximately 2200 m only a little snow is lying.

### Tendency

As a consequence of the fresh snow the prevalence of avalanche prone locations will increase during the course of the night.

## Danger Level 2 - Moderate



**Tendency: Increasing avalanche danger**  
on Sunday 09 12 2018



Wind-drifted  
snow



Treeline

### Fresh wind slabs require caution.

In the last four days mostly small wind slabs formed in particular adjacent to ridgelines as well as at high altitude. These avalanche prone locations are to be found in particular on wind-loaded slopes above approximately 1800 m. Winter sport participants can release avalanches in some places, including medium-sized ones.

### Snowpack

**Danger patterns**

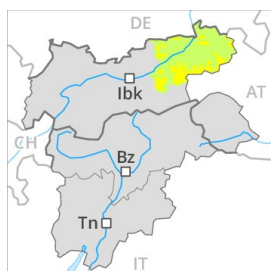
dp 6: cold, loose snow and wind

The old snowpack will be generally well bonded. Wind slabs are lying on soft layers. Below approximately 1800 m only a little snow is lying.

### Tendency

As a consequence of fresh snow and wind the avalanche prone locations will become more prevalent as the day progresses.

## Danger Level 2 - Moderate



**Tendency: Increasing avalanche danger**  
on Sunday 09 12 2018



Wind-drifted  
snow



Treeline

### Fresh wind slabs require caution.

In the last four days mostly small wind slabs formed in particular adjacent to ridgelines as well as at high altitude. These avalanche prone locations are to be found in particular on wind-loaded slopes above approximately 1800 m. Winter sport participants can release avalanches in some places, including medium-sized ones.

### Snowpack

**Danger patterns**

dp 6: cold, loose snow and wind

The old snowpack will be generally well bonded. Wind slabs are lying on soft layers. Below approximately 1800 m only a little snow is lying.

### Tendency

As a consequence of fresh snow and wind the avalanche prone locations will become more prevalent as the day progresses.