

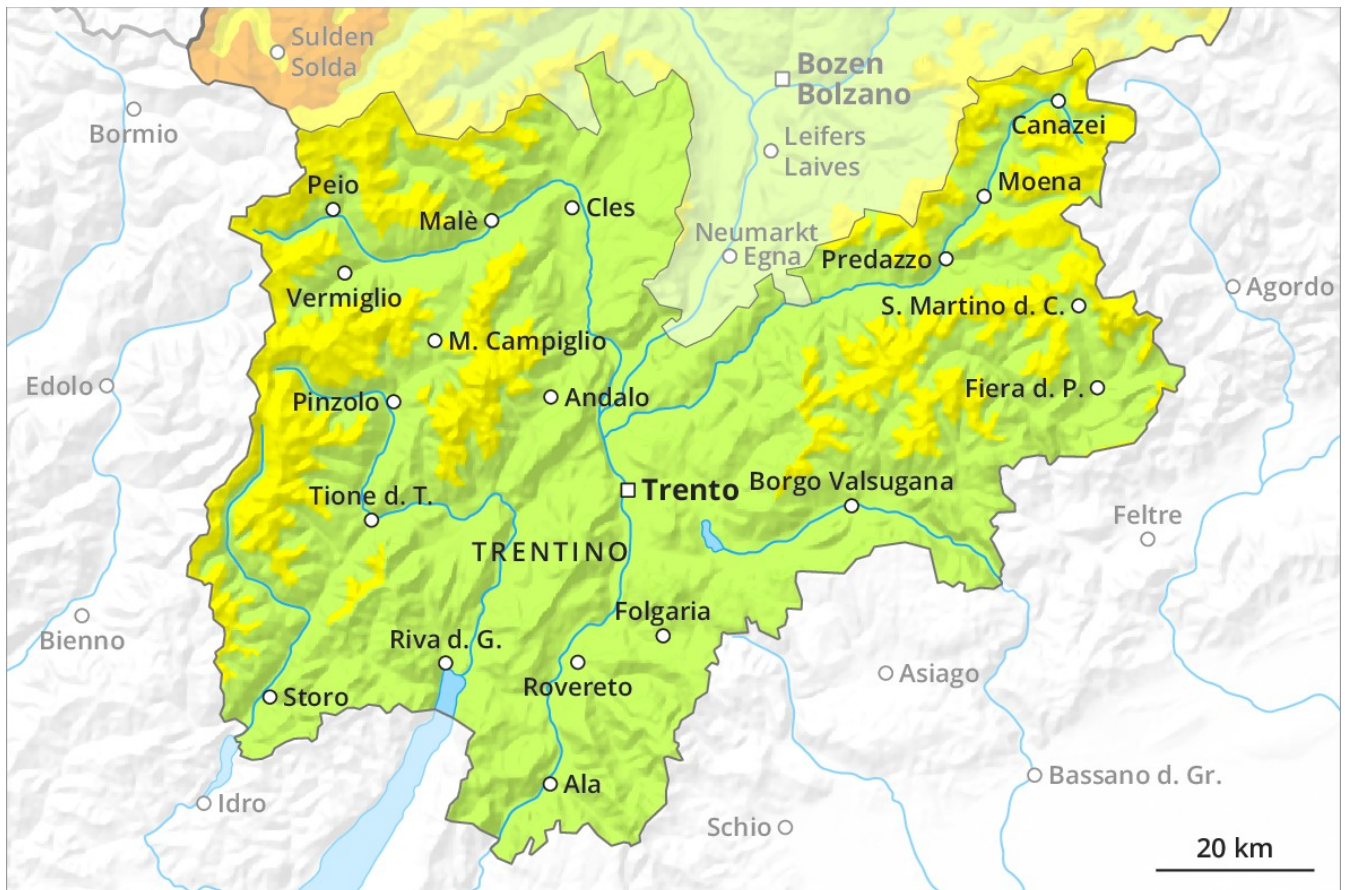
# Avalanche Forecast

## Tuesday 11 12 2018

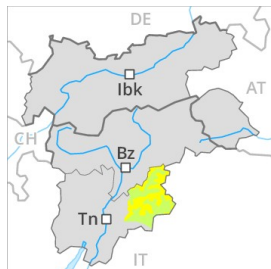
Published 10 12 2018, 17:00



Avalanche.report



## Danger Level 2 - Moderate



**Tendency: Increasing avalanche danger**  
on Wednesday 12 12 2018



Wind-drifted  
snow



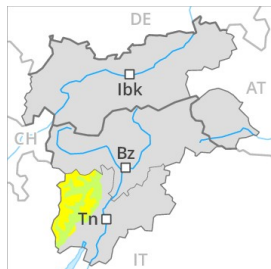
In some localities increase in avalanche danger as a consequence of the sometimes strong northerly wind.

Backcountry touring and other off-piste activities call for experience in the assessment of avalanche danger and careful route selection. In addition the wind slabs in particular adjacent to ridgelines in all aspects and generally at high altitudes are capable of being triggered in some locations.

### Snowpack

The sometimes moderate wind will transport the loosely bonded old snow. Especially in gullies and bowls the wind slabs will increase in size once again.

## Danger Level 2 - Moderate



**Tendency: Constant avalanche danger** →  
on Wednesday 12 12 2018



Wind-drifted  
snow



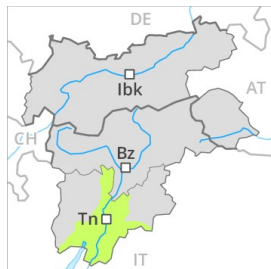
In some localities increase in avalanche danger as a consequence of the sometimes strong northerly wind.

Backcountry touring and other off-piste activities call for experience in the assessment of avalanche danger and careful route selection. In addition the wind slabs in particular adjacent to ridgelines in all aspects and generally at high altitudes are capable of being triggered in some locations.

### Snowpack

In particular in the regions exposed to the foehn wind the wind slabs will increase in size additionally.

## Danger Level 1 - Low



**Tendency: Constant avalanche danger** →  
on Wednesday 12 12 2018



Wind-drifted  
snow



2200m

The wind slabs are easy for the trained eye to recognise and to be assessed with care and prudence.

The old snowpack remains in most cases well bonded. In some cases various wind slab layers are lying on the smooth surface of an old snowpack.

### Snowpack

Fresh and older wind slabs represent the main danger.

### Tendency

The snowpack remains in most cases favourable.