

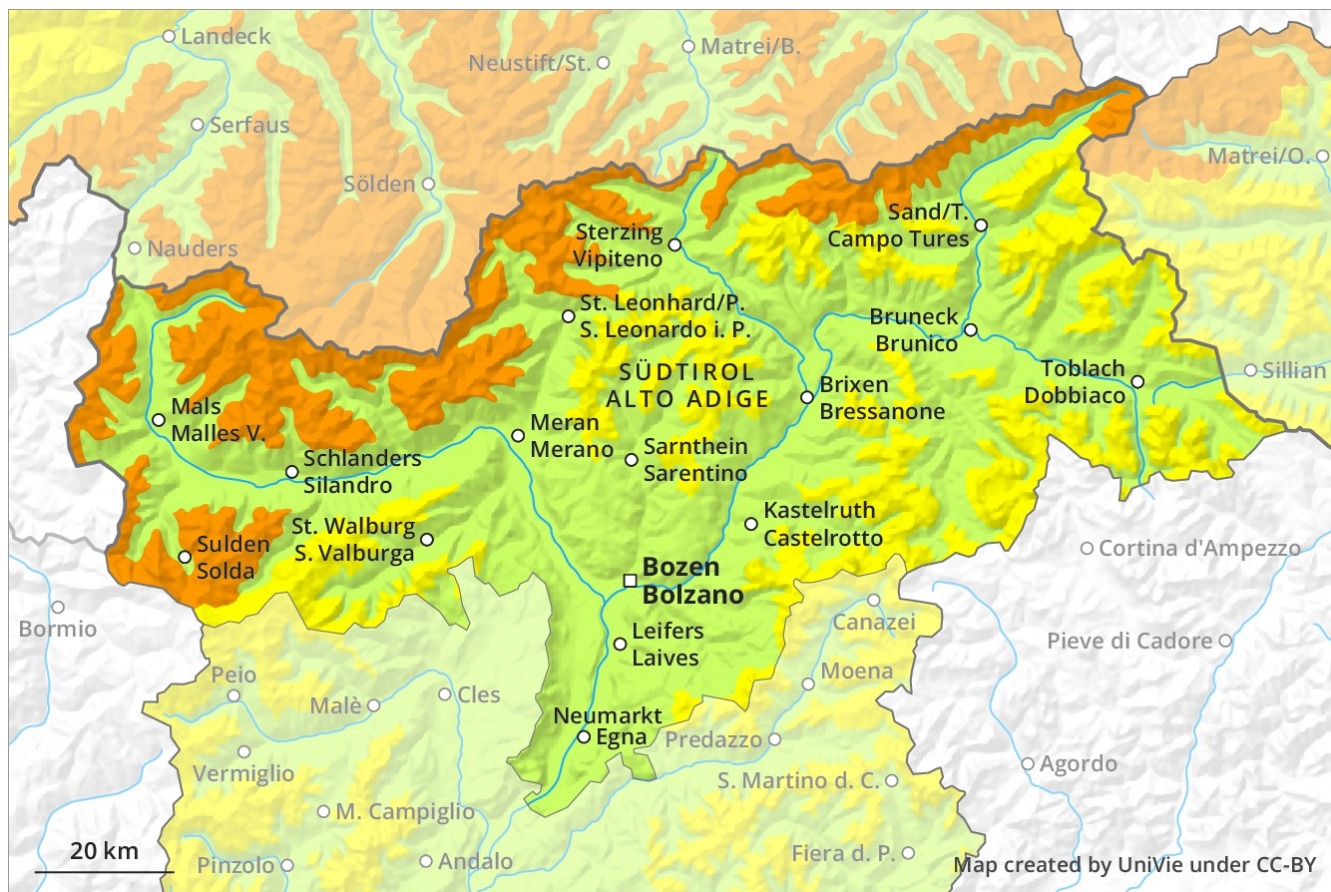
Avalanche Forecast

Thursday 13 12 2018

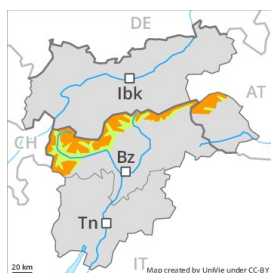
Published 13 12 2018, 15:02



Avalanche.report



Danger Level 3 - Considerable



Tendency: Decreasing avalanche danger
on Friday 14 12 2018



Wind-drifted
snow



Treeline

Wind slabs represent the main danger. This applies in particular above the tree line.

As a consequence of fresh snow and a strong to storm force northwesterly wind, avalanche prone wind slabs formed in the last few days in particular adjacent to ridgelines and in gullies and bowls. At high altitudes and in high Alpine regions avalanche prone locations are more prevalent. Wind slabs can as before be released by small loads. Backcountry touring calls for experience in the assessment of avalanche danger.

Snowpack

Danger patterns

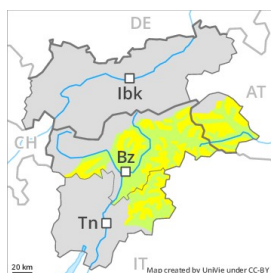
dp 6: cold, loose snow and wind

Over a wide area 30 to 50 cm of snow, and even more in some localities, has fallen in the last few days above approximately 2000 m. In many cases fresh snow and wind slabs are lying on the soft surface of an old snowpack. The old snowpack will be in most cases favourable.

Tendency

Further decrease in danger.

Danger Level 2 - Moderate



Tendency: Decreasing avalanche danger
on Friday 14 12 2018



Wind-drifted
snow



Treeline

Fresh wind slabs require caution.

As a consequence of a strong wind from northwesterly directions, sometimes avalanche prone wind slabs formed above the tree line. At elevated altitudes the avalanche prone locations are more prevalent and larger. Weak layers in the upper part of the snowpack can be released in particular in gullies and bowls and behind abrupt changes in the terrain. Avalanches are rather small but can be released by a single winter sport participant. In particular in regions neighbouring those that are subject to danger level 3 (considerable) avalanche prone locations are more prevalent and the danger is greater.

Snowpack

Danger patterns

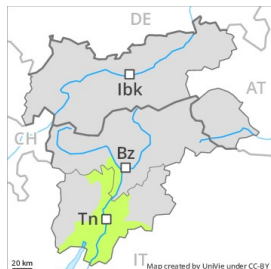
dp 6: cold, loose snow and wind

In particular in the north up to 20 cm of snow. has fallen in the last few days above approximately 2000 m. The wind slabs have settled a little.

Tendency

Further decrease in danger.

Danger Level 1 - Low



Tendency: Constant avalanche danger →
on Friday 14 12 2018



Wind-drifted
snow



Treeline

Only a little snow is lying above approximately 1800 m.

The wind slabs represent the main danger. They are mostly shallow and to be assessed with care and prudence. The avalanche prone locations are rather rare and are clearly recognisable to the trained eye.

Snowpack

Above the tree line from a snow sport perspective, in most cases insufficient snow is lying. In some places wind slabs are lying on the smooth surface of an old snowpack. The snowpack remains generally well bonded.

Tendency

The snowpack remains in most cases favourable.