

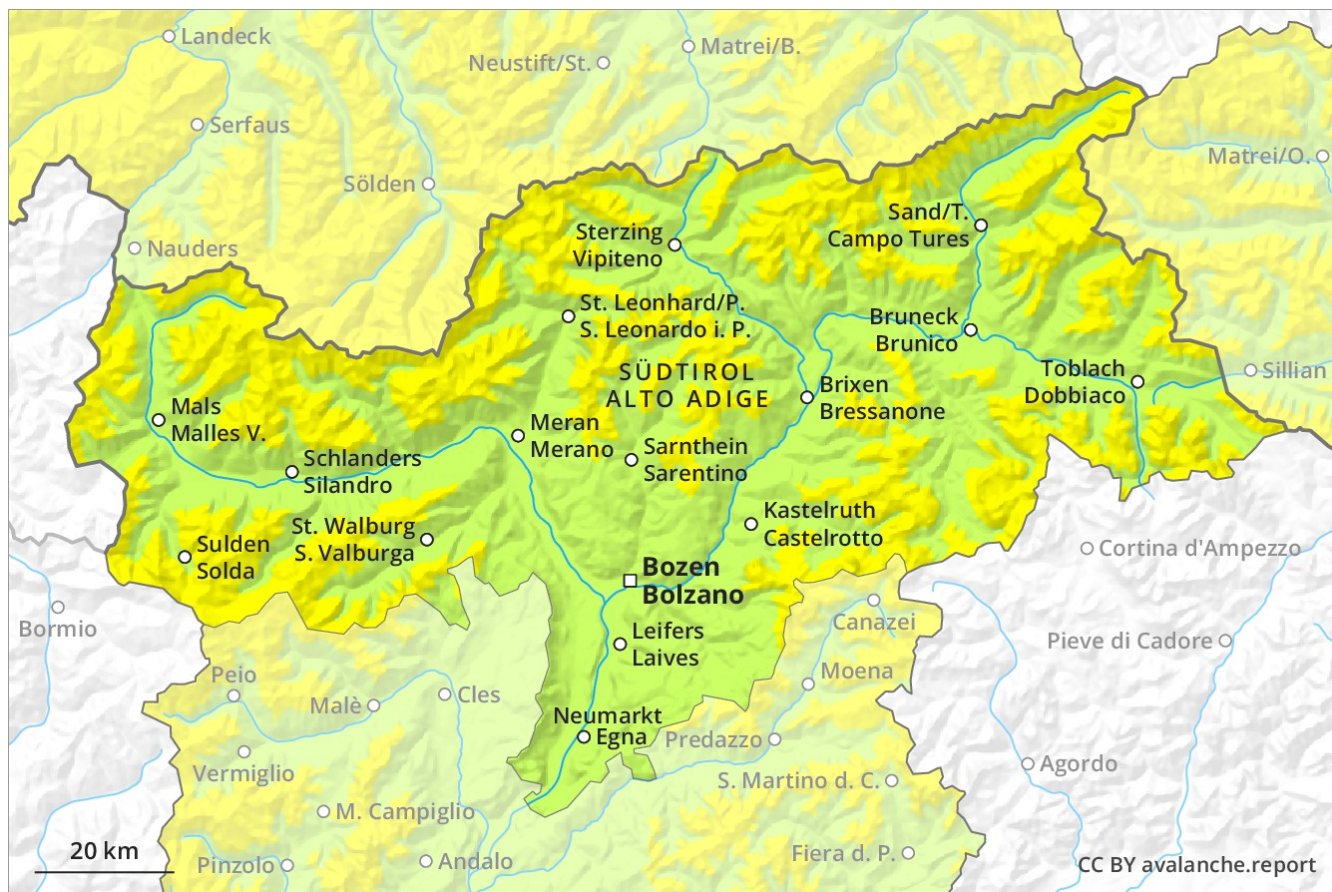
# Avalanche Forecast

## Wednesday 19 12 2018

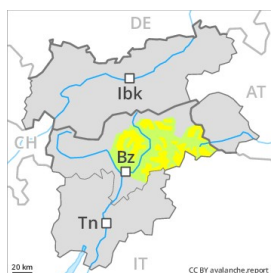
Published 18 12 2018, 17:00



Avalanche.report



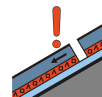
## Danger Level 2 - Moderate



**Tendency: Constant avalanche danger** →  
on Thursday 20 12 2018



Wind-drifted  
snow



Persistent  
weak layer



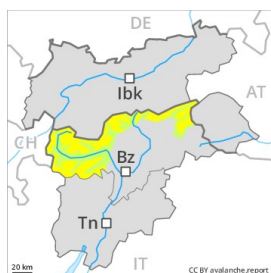
### Wind slabs require caution.

The mostly small wind slabs represent the main danger. These avalanche prone locations are clearly recognisable to the trained eye. Avalanches are rather small and can mostly be released by large loads. At elevated altitudes the avalanche prone locations are more prevalent and larger. Apart from the danger of being buried, restraint should be exercised as well in view of the danger of avalanches sweeping people along and giving rise to falls.

### Snowpack

Faceted weak layers exist in the snowpack especially adjacent to ridgelines and in gullies and bowls. The snowpack will be subject to considerable local variations. Weak layers in the old snowpack necessitate caution. From a snow sport perspective, in most cases insufficient snow is lying.

## Danger Level 2 - Moderate



**Tendency: Constant avalanche danger** →  
 on Thursday 20 12 2018



Wind-drifted  
 snow



Persistent  
 weak layer



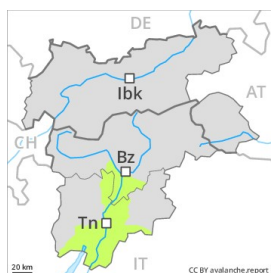
On shady slopes a dangerous avalanche situation will persist in some regions.

The wind slabs must be evaluated with care and prudence in particular on west to north to east facing aspects above approximately 2200 m. The somewhat older wind slabs are to be found in particular adjacent to ridgelines and in gullies and bowls and generally in the high Alpine regions. In the west and in the north avalanche prone locations are more prevalent and the danger is greater. Avalanches can be released in the old snowpack in particular on rather lightly snow-covered east, north and west facing slopes. Backcountry touring calls for meticulous route selection.

### Snowpack

The snowpack will be subject to considerable local variations. Isolated avalanche prone weak layers exist in the old snowpack especially above approximately 2400 m. Whumpfung sounds can indicate the danger. At low and intermediate altitudes thus far only a little snow is lying.

## Danger Level 1 - Low



**Tendency: Increasing avalanche danger**  
on Thursday 20 12 2018



Wind-drifted  
snow



Only a little snow is lying on north and northeast facing slopes.

The avalanche prone locations are very rare and are clearly recognisable to the trained eye. Caution is to be exercised in particular in gullies and bowls above approximately 2000 m and adjacent to ridgelines and in pass areas. Apart from the danger of being buried, restraint should be exercised in particular in view of the danger of avalanches sweeping people along and giving rise to falls.

### Snowpack

The snowpack will be in most cases well bonded. In all altitude zones from a snow sport perspective, in most cases insufficient snow is lying.

### Tendency

The snowpack will be quite well bonded. As a consequence of the snowfall the prevalence of avalanche prone locations will increase during the course of the night.