

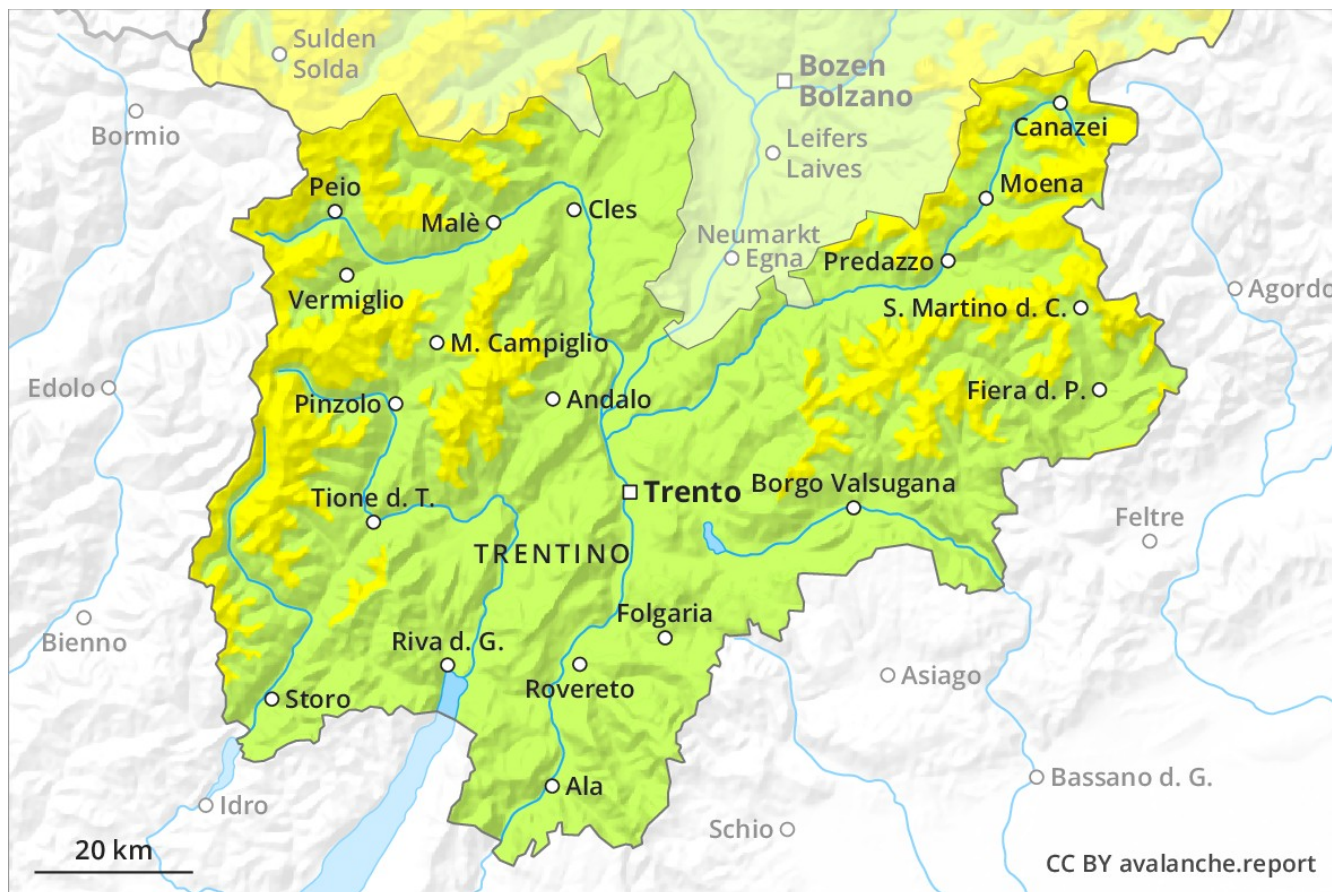
# Avalanche Forecast

## Wednesday 19 12 2018

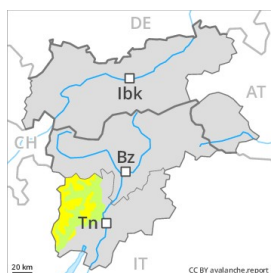
Published 18 12 2018, 17:00



Avalanche.report



## Danger Level 2 - Moderate



**Tendency: Increasing avalanche danger**  
on Thursday 20 12 2018



Wind-drifted  
snow



The danger exists in particular in alpine snow sports terrain. The older wind slabs are mostly shallow but to be assessed with care and prudence.

The mostly shallow wind slabs represent the main danger. They are to be found in particular adjacent to ridgelines in all aspects and in the high Alpine regions. Avalanches can be released, in particular by large loads and reach medium size. The avalanche prone locations are to be found in particular on steep slopes above approximately 2200 m, and adjacent to ridgelines and in gullies and bowls in all aspects.

Backcountry touring and other off-piste activities call for experience in the assessment of avalanche danger and careful route selection.

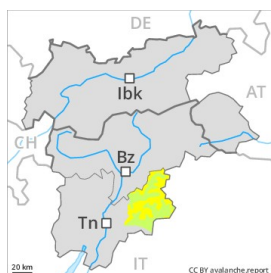
### Snowpack

The wind has transported the fresh snow and, in some cases, old snow as well. Faceted weak layers exist deep in the snowpack in particular on north and east facing slopes. The snowpack remains prone to triggering in particular on wind-loaded slopes.

### Tendency

The backcountry touring conditions remain mostly favourable. As a consequence of fresh snow and wind the prevalence of avalanche prone locations will increase during the night.

## Danger Level 2 - Moderate



**Tendency: Constant avalanche danger** →  
on Thursday 20 12 2018



Wind-drifted  
snow



The danger exists in particular in alpine snow sports terrain. The older wind slabs are mostly shallow but to be assessed with care and prudence.

The mostly shallow wind slabs represent the main danger. They are to be found in particular adjacent to ridgelines in all aspects and in the high Alpine regions. Avalanches can be released, in particular by large loads and reach medium size. Individual avalanche prone locations are to be found in particular on steep slopes above approximately 2200 m, and adjacent to ridgelines and in gullies and bowls in all aspects. Backcountry touring and other off-piste activities call for experience in the assessment of avalanche danger and careful route selection.

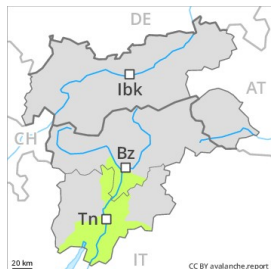
### Snowpack

The wind has transported the fresh snow and, in some cases, old snow as well. The snowpack remains prone to triggering in particular on wind-loaded slopes.

### Tendency

The backcountry touring conditions remain mostly favourable.

## Danger Level 1 - Low



**Tendency: Increasing avalanche danger**  
on Thursday 20 12 2018



Wind-drifted  
snow



Only a little snow is lying on north and northeast facing slopes.

The avalanche prone locations are very rare and are clearly recognisable to the trained eye. Caution is to be exercised in particular in gullies and bowls above approximately 2000 m and adjacent to ridgelines and in pass areas. Apart from the danger of being buried, restraint should be exercised in particular in view of the danger of avalanches sweeping people along and giving rise to falls.

### Snowpack

The snowpack will be in most cases well bonded. In all altitude zones from a snow sport perspective, in most cases insufficient snow is lying.

### Tendency

The snowpack will be quite well bonded. As a consequence of the snowfall the prevalence of avalanche prone locations will increase during the course of the night.