

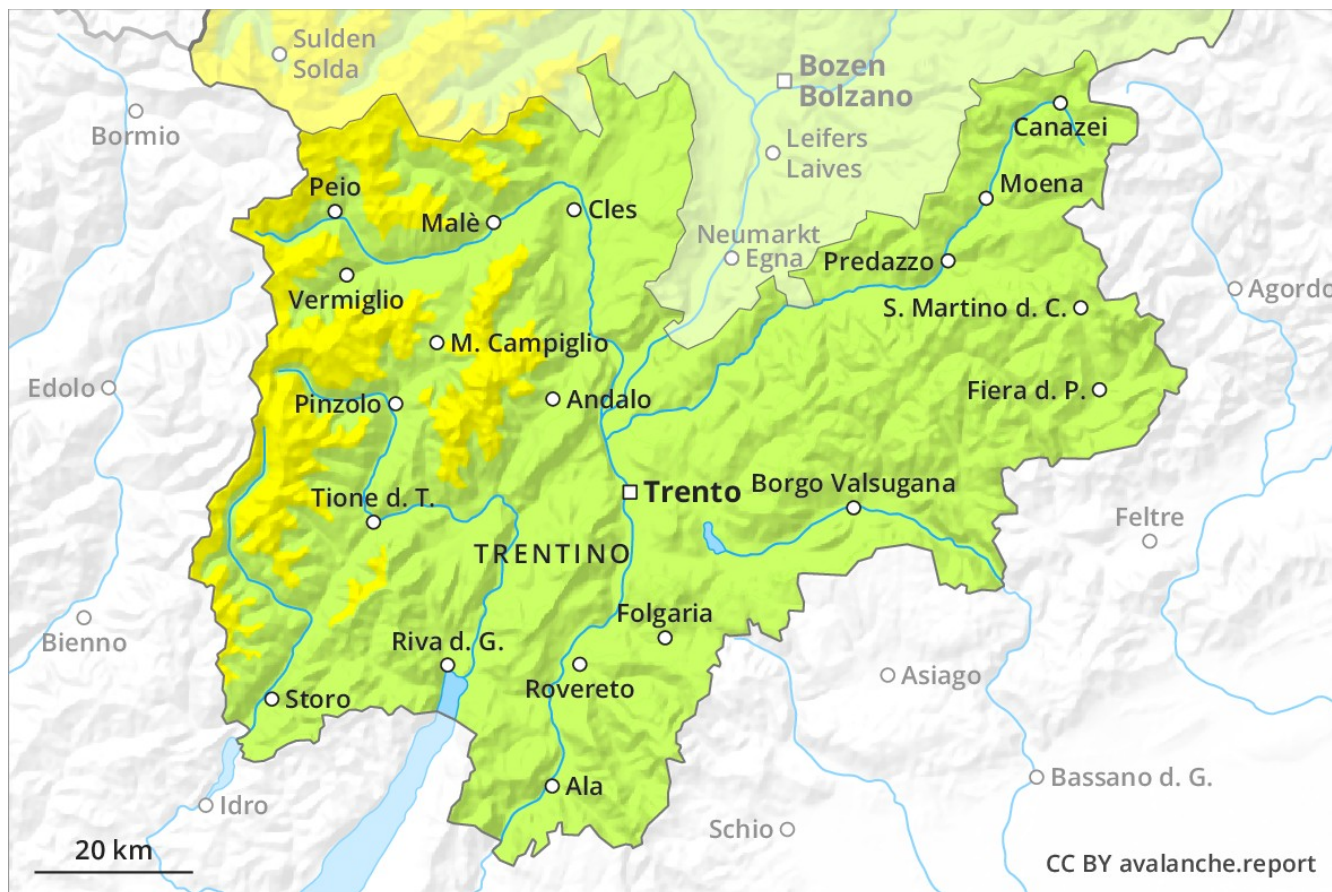
# Avalanche Forecast

## Friday 21 12 2018

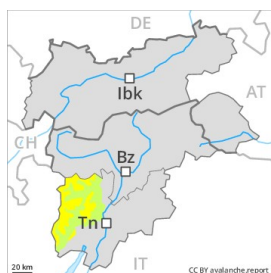
Published 20 12 2018, 17:00



Avalanche.report



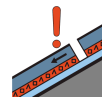
## Danger Level 2 - Moderate



**Tendency: Constant avalanche danger** →  
on Saturday 22 12 2018



Wind-drifted  
snow



Persistent  
weak layer



The danger exists in particular in alpine snow sports terrain. The older wind slabs are mostly shallow but to be assessed with care and prudence.

The mostly shallow wind slabs represent the main danger. They are to be found in particular adjacent to ridgelines in all aspects and in the high Alpine regions. Avalanches can be released, in particular by large loads and reach medium size. The avalanche prone locations are to be found especially on steep shady slopes above approximately 2200 m, and adjacent to ridgelines and in gullies and bowls in all aspects. Backcountry touring and other off-piste activities call for experience in the assessment of avalanche danger and careful route selection.

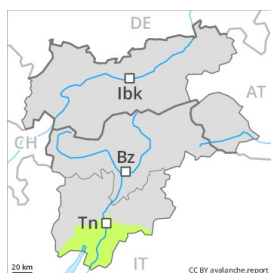
### Snowpack

The wind has transported the fresh snow and, in some cases, old snow as well. Faceted weak layers exist deep in the snowpack in particular on north and east facing slopes. The snowpack remains subject to considerable local variations in particular on wind-loaded slopes.

### Tendency

The backcountry touring conditions remain quite favourable.

## Danger Level 1 - Low



**Tendency: Constant avalanche danger** →  
on Saturday 22 12 2018



Wind-drifted  
snow



Favourable  
situation



In all altitude zones only a little snow is lying.

The avalanche prone locations are very rare and are clearly recognisable to the trained eye. Caution is to be exercised in particular in gullies and bowls above approximately 2000 m and adjacent to ridgelines and in pass areas. Apart from the danger of being buried, restraint should be exercised in particular in view of the danger of avalanches sweeping people along and giving rise to falls.

### Snowpack

The snowpack will be in most cases well bonded. In all altitude zones from a snow sport perspective, in most cases insufficient snow is lying.

### Tendency

The snowpack will be quite soft. Gradual decrease in danger as the temperature drops.

## Danger Level 1 - Low



**Tendency: Constant avalanche danger** →  
on Saturday 22 12 2018



Wind-drifted  
snow



The danger exists in particular in alpine snow sports terrain. The older wind slabs are mostly shallow but to be assessed with care and prudence.

The mostly shallow wind slabs represent the main danger. They are to be found in particular adjacent to ridgelines in all aspects and in the high Alpine regions. Avalanches can as before be released, in particular by large loads, but they will be small in most cases. Individual avalanche prone locations are to be found especially on steep shady slopes above approximately 2200 m, and adjacent to ridgelines and in gullies and bowls in all aspects. Backcountry touring and other off-piste activities call for meticulous route selection.

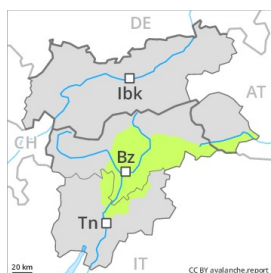
### Snowpack

The wind has transported the fresh snow and, in some cases, old snow as well. The snowpack remains prone to triggering in particular on wind-loaded slopes.

### Tendency

The backcountry touring conditions remain mostly favourable.

## Danger Level 1 - Low



**Tendency: Constant avalanche danger** →  
on Saturday 22 12 2018



Wind-drifted  
snow



Only a little snow is lying.

Caution is to be exercised in particular adjacent to ridgelines and in gullies and bowls and on wind-loaded slopes. The avalanche prone locations are clearly recognisable to the trained eye. Apart from the danger of being buried, restraint should be exercised in particular in view of the danger of avalanches sweeping people along and giving rise to falls. There is a danger of falling on the hard snow surface.

### Snowpack

The snowpack will be subject to considerable local variations. In all altitude zones from a snow sport perspective, in most cases insufficient snow is lying.