

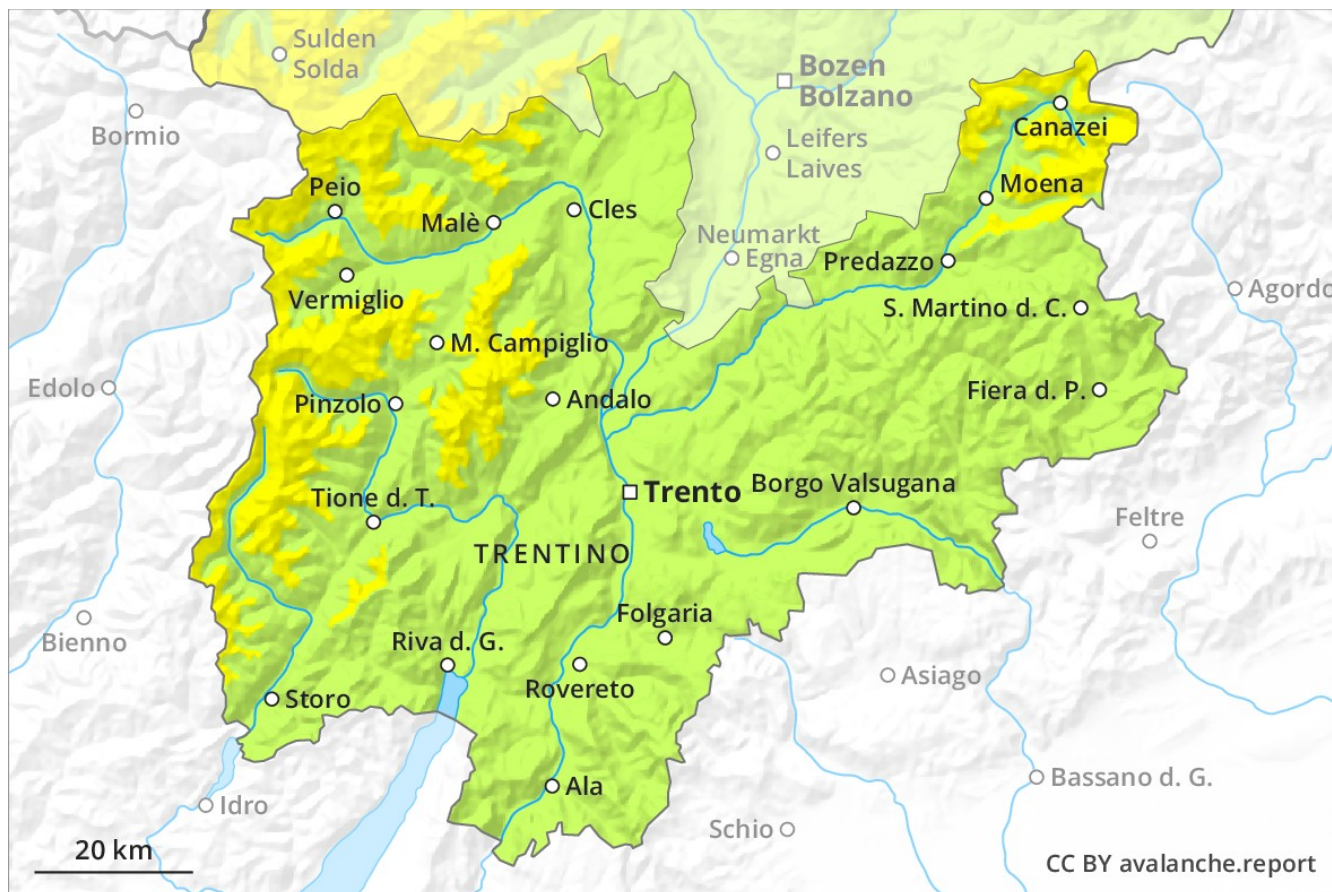
# Avalanche Forecast

## Wednesday 26 12 2018

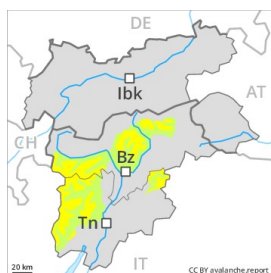
Published 25 12 2018, 17:00



Avalanche.report



## Danger Level 2 - Moderate



**Tendency: Constant avalanche danger** →  
on Thursday 27 12 2018



Wind-drifted  
snow



Persistent  
weak layer



### The wind slabs represent the main danger.

As a consequence of fresh snow and a strong wind from northerly directions, wind slabs formed in particular adjacent to ridgelines and in gullies and bowls. In particular on wind-loaded slopes avalanches can be released easily and reach large size in isolated cases. In regions neighbouring those that are subject to danger level 3 (considerable) and in high Alpine regions avalanche prone locations are more prevalent and the danger is greater. The avalanche prone locations are clearly recognisable to the trained eye. Apart from the danger of being buried, restraint should be exercised as well in view of the danger of avalanches sweeping people along and giving rise to falls.

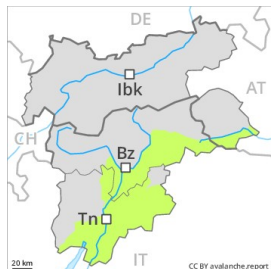
### Snowpack

Some snow has fallen in particular in the north. The snowpack will be subject to considerable local variations. In many cases fresh snow and wind slabs are lying on the soft surface of an old snowpack. Whumpfung sounds and the formation of shooting cracks when stepping on the snowpack are a clear indication of a weakly bonded snowpack.

### Tendency

Moderate, level 2.

## Danger Level 1 - Low



**Tendency: Constant avalanche danger** →  
on Thursday 27 12 2018



Wind-drifted  
snow



### Only a little snow is lying.

The wind slabs represent the main danger. The wind slabs are to be found in particular adjacent to ridgelines and in gullies and bowls as well as in the high Alpine regions. The avalanche prone locations are rather rare and are easy to recognise. Apart from the danger of being buried, restraint should be exercised as well in view of the danger of avalanches sweeping people along and giving rise to falls.

### Snowpack

**Danger patterns**

dp 6: cold, loose snow and wind

From a snow sport perspective, in most cases insufficient snow is lying. The sometimes strong wind has transported only a little snow.

### Tendency

Low, level 1.