

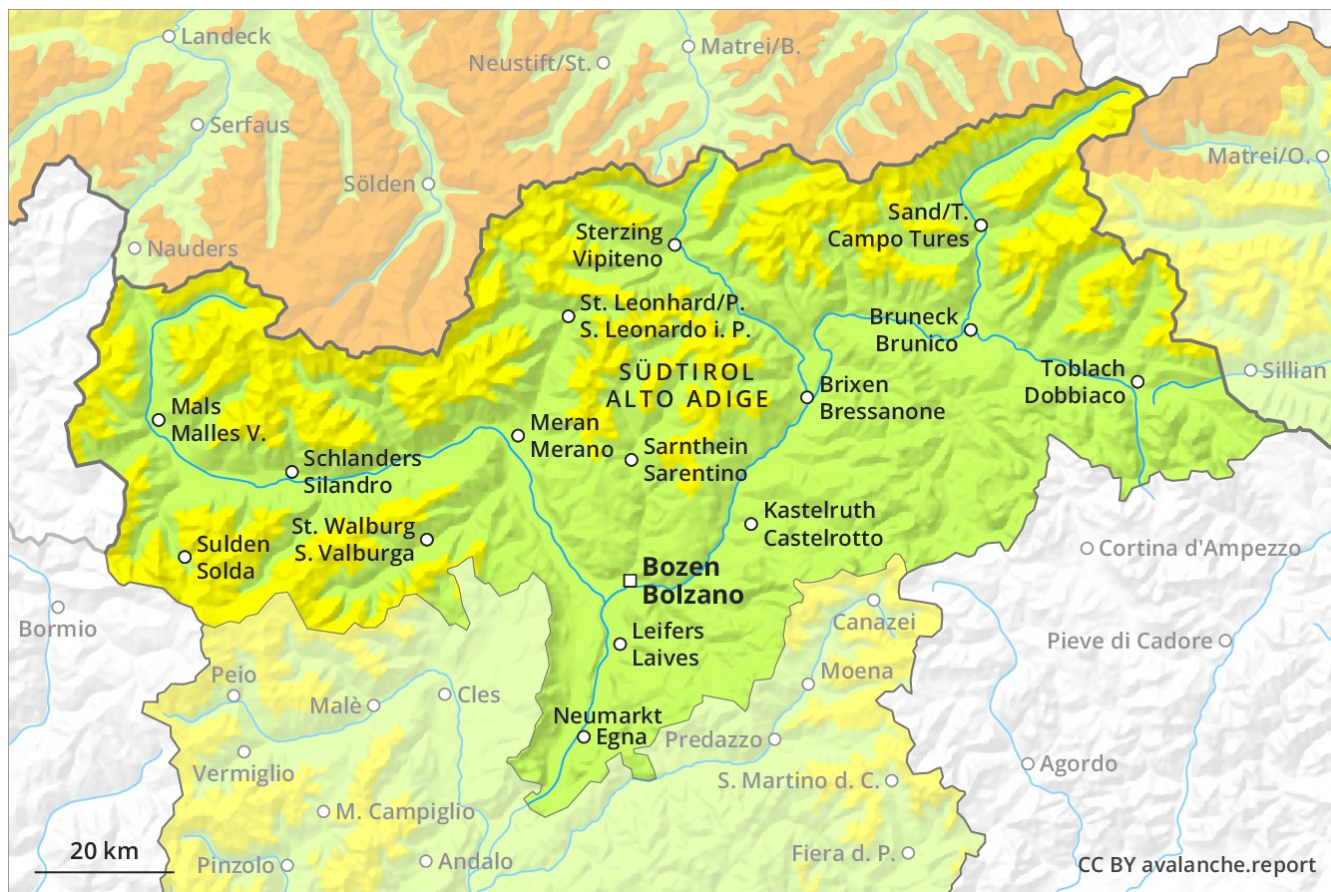
Avalanche Forecast

Friday 28 12 2018

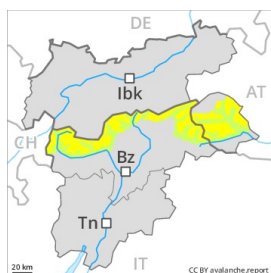
Published 27 12 2018, 17:00



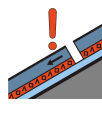
Avalanche.report



Danger Level 2 - Moderate



Tendency: Constant avalanche danger →
on Saturday 29 12 2018



Persistent weak layer



Wind-drifted snow



Weak layers in the old snowpack necessitate caution.

Weakly bonded old snow: This applies above approximately 2200 m and below approximately 2700 m. Avalanches can in isolated cases be released by a single winter sport participant and reach medium size. The avalanche prone locations are to be found on steep slopes of all aspects. In addition the somewhat older wind slabs of the last few days adjacent to ridgelines on north facing slopes are prone to triggering in some cases still, especially above approximately 2500 m. Especially transitions from a shallow to a deep snowpack are unfavourable. Backcountry touring and other off-piste activities call for experience and a certain restraint.

Snowpack

Danger patterns

dp 5: snowfall after a long period of cold

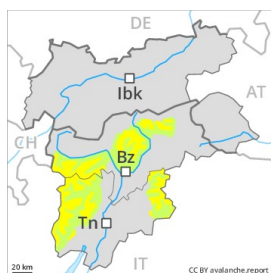
dp 6: cold, loose snow and wind

The snowpack will be subject to considerable local variations. The somewhat older wind slabs have settled a little. Avalanche prone weak layers exist in the centre of the snowpack, in particular between approximately 2200 and 2700 m.

Tendency

The avalanche danger will persist.

Danger Level 2 - Moderate



Tendency: Constant avalanche danger →
on Saturday 29 12 2018



Wind-drifted
snow



Persistent
weak layer



The wind slabs represent the main danger.

As a consequence of fresh snow and wind from northerly directions, wind slabs formed in particular adjacent to ridgelines and in gullies and bowls. In particular on wind-loaded slopes avalanches can be released easily and reach a dangerous size. Especially in regions with a lot of snow and in high Alpine regions avalanche prone locations are more prevalent and the danger is greater. The avalanche prone locations are clearly recognisable to the trained eye. Apart from the danger of being buried, restraint should be exercised as well in view of the danger of avalanches sweeping people along and giving rise to falls.

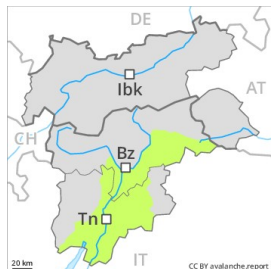
Snowpack

The snowpack will be subject to considerable local variations. Whumpfung sounds and penetration of the old snow cover can indicate the danger.

Tendency

Moderate, level 2.

Danger Level 1 - Low



Tendency: Constant avalanche danger →
on Saturday 29 12 2018



Wind-drifted
snow



Only a little snow is lying on south facing slopes.

The wind slabs represent the main danger. The wind slabs are to be found in particular adjacent to ridgelines and in gullies and bowls as well as in the high Alpine regions. The avalanche prone locations are rather rare and are easy to recognise.

Snowpack

From a snow sport perspective, in most cases insufficient snow is lying on south facing slopes.

Tendency

Low, level 1.