

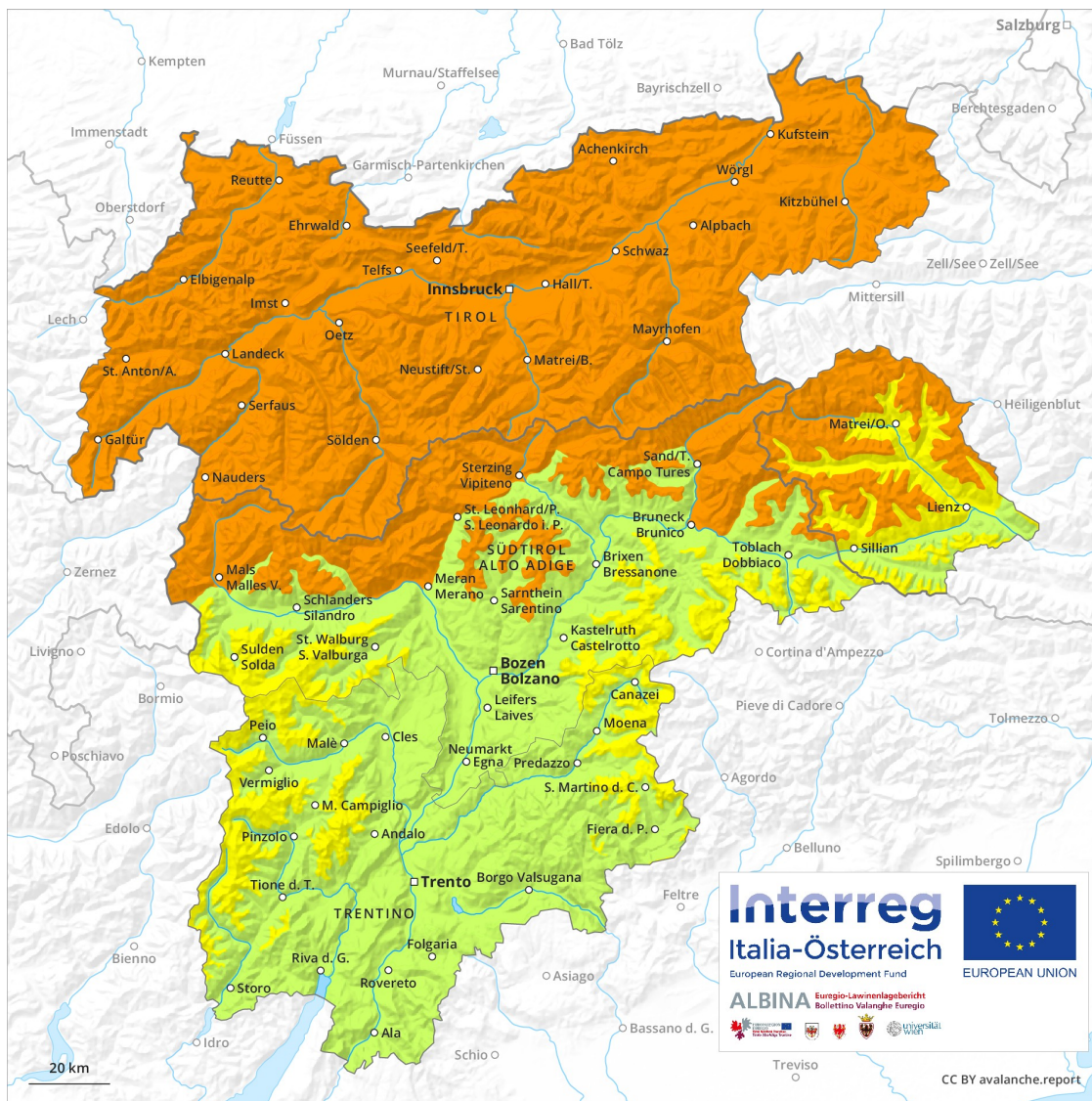
Avalanche Forecast

Wednesday 02 01 2019

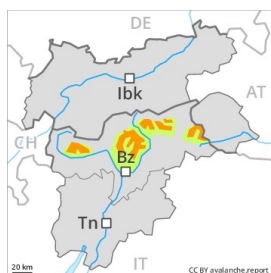
Published 01 01 2019, 17:00



Avalanche.report



Danger Level 3 - Considerable



Tendency: Constant avalanche danger →

on Thursday 03 01 2019



Wind-drifted
snow



Fresh wind slabs are in many cases extensive and prone to triggering.

As a consequence of fresh snow and stormy weather the wind slabs will increase in size additionally. These can be released, even by a single winter sport participant or triggered naturally. The avalanche prone locations are to be found in all aspects above approximately 2000 m. In the typical avalanche paths in particular in the regions exposed to heavier precipitation the avalanches can in many cases reach fairly large size. Backcountry touring calls for experience in the assessment of avalanche danger.

Snowpack


The snowpack will be unstable over a wide area. Faceted weak layers exist in the snowpack at transitions from a shallow to a deep snowpack. Medium-sized and, in isolated cases, large dry slab avalanches are possible as a consequence of fresh snow and stormy weather.

Tendency

The wind will be strong to storm force.

Danger Level 3 - Considerable



Tendency: Increasing avalanche danger 
 on Thursday 03 01 2019



Wind-drifted
 snow



New snow



The conditions are very precarious for snow sport activities outside marked and open pistes. Fresh wind slabs represent the main danger, in particular above the tree line,, also in areas close to the tree line.

Significant increase in avalanche danger as a consequence of fresh snow and wind. This applies in all aspects especially above the tree line, also in areas close to the tree line. Wind slabs can be released easily, even by a single winter sport participant,. In the regions exposed to heavier precipitation potentially danger level 4 (high) will be reached. Medium-sized and, in isolated cases, large natural avalanches are possible in these regions. This applies on wind-loaded slopes as well as adjacent to ridgelines. The conditions are very precarious for winter sport activities outside marked and open pistes.

Snowpack

Danger patterns

dp 6: cold, loose snow and wind

Over a wide area 30 to 50 cm of snow, and even more in some localities, will fall in all altitude zones. The fresh wind slabs represent the main danger. Over a wide area wind slabs are lying on soft layers. The extensive wind slabs of the last four days can be released easily. or in isolated cases naturally, in all aspects above the tree line. This also applies in areas close to the tree line. Faceted weak layers exist in the old snowpack in the Western Tuxer Alps, in the Eastern Tuxer Alps and in the Southern Zillertal Alps and High Tauern. This applies in all aspects especially above the tree line.

Tendency

The snow sport conditions outside marked and open pistes remain precarious. As a consequence of fresh snow and strong wind the prevalence and size of the avalanche prone locations will increase on Wednesday.

Danger Level 3 - Considerable



Tendency: Constant avalanche danger →
on Thursday 03 01 2019



Wind-drifted
snow



Considerable, level 3.

As a consequence of fresh snow and stormy weather the wind slabs will increase in size additionally. These can in many cases be released by small loads or triggered naturally. In particular from starting zones at higher altitudes medium-sized natural avalanches must be expected. The avalanche prone locations are to be found on steep slopes in all altitude zones. The conditions are dangerous for backcountry touring and other off-piste activities.

Snowpack

The snowpack will be weakly bonded over a wide area. Fresh snow and wind slabs are lying on soft layers. Faceted weak layers exist in the old snowpack. Medium-sized and, in isolated cases, large dry slab avalanches are possible especially in the regions exposed to heavier precipitation.

Tendency

The wind will be strong to storm force.

Danger Level 3 - Considerable



Tendency: Increasing avalanche danger
on Thursday 03 01 2019



Wind-drifted
snow



Treeline



New snow



Treeline

Considerable, level 3. This applies in particular above the tree line,, but in isolated cases also below the tree line. Fresh wind slabs require caution. Slab avalanches and loose snow avalanches are likely to occur from the early morning.

As a consequence of fresh snow and a strong to storm force wind from northwesterly directions, extensive wind slabs will form. Even single winter sport participants can release avalanches easily, including dangerously large ones. This applies in all aspects also in all altitude zones. At elevated altitudes avalanche prone locations are more prevalent. Weak layers in the old snowpack can be released easily, in particular at transitions from a shallow to a deep snowpack.

Snowpack

Danger patterns

dp 6: cold, loose snow and wind

dp 2: gliding snow

A lot of snow will fall over a wide area. In some regions strong northwesterly wind. In some cases wind slabs are lying on soft layers, especially on shady slopes and adjacent to ridgelines in all aspects. Individual weak layers exist in the centre of the old snowpack.

Tendency

As a consequence of fresh snow and strong wind the prevalence and size of the avalanche prone locations will increase as the day progresses.

Danger Level 3 - Considerable



Tendency: Increasing avalanche danger
 on Thursday 03 01 2019



Wind-drifted snow



Treeline



Persistent weak layer



Treeline

Fresh wind slabs are to be evaluated critically. Weak layers in the old snowpack necessitate defensive route selection.

As a consequence of fresh snow and a strong to storm force northwesterly wind, avalanche prone wind slabs will form in particular adjacent to ridgelines and in gullies and bowls as well as above the tree line. Weakly bonded old snow: Even single winter sport participants can release avalanches with increasing likelihood. Caution is to be exercised in all aspects in particular above the tree line as well as adjacent to ridgelines. The avalanche prone locations are to be found on steep slopes of all aspects. On very steep west, north and east facing slopes the avalanche prone locations are more prevalent. Remotely triggered avalanches are to be expected. Especially transitions from a shallow to a deep snowpack are unfavourable. Backcountry touring and other off-piste activities call for extensive experience in the assessment of avalanche danger and a certain restraint.

Snowpack

Danger patterns

dp 4: cold following warm / warm following cold

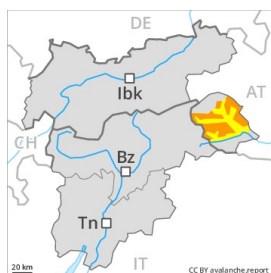
dp 6: cold, loose snow and wind

Since Sunday, 30 December extensive wind slabs formed in particular above the tree line. The fresh wind slabs are lying on weak layers. Avalanche prone weak layers exist in the old snowpack. This applies in all aspects especially above the tree line as well as adjacent to ridgelines. The snowpack will be subject to considerable local variations.

Tendency

As a consequence of fresh snow and a strong northwesterly wind, extensive wind slabs formed since Sunday in all aspects. The avalanche danger will increase significantly during the day.

Danger Level 3 - Considerable



Tendency: Increasing avalanche danger
 on Thursday 03 01 2019



Wind-drifted
 snow



Treeline



Persistent
 weak layer



Treeline

The conditions are precarious for winter sport activities outside marked and open pistes. Wind slabs and weakly bonded old snow require caution.

Fresh wind slabs: As a consequence of fresh snow and a strong northwesterly wind, extensive wind slabs will form in particular in gullies and bowls and behind abrupt changes in the terrain as well as above the tree line. These can be released even by a single winter sport participant in all aspects, especially on very steep slopes above the tree line as well as in areas close to the tree line. At intermediate and high altitudes avalanche prone locations are more prevalent. Weakly bonded old snow above the tree line. Avalanches can to an increasing extent be released by a single winter sport participant and reach medium size. The avalanche prone locations are to be found on steep slopes of all aspects. Especially transitions from a shallow to a deep snowpack are unfavourable. Backcountry touring and other off-piste activities call for very extensive experience in the assessment of avalanche danger and great restraint.

Snowpack

Danger patterns

dp 6: cold, loose snow and wind

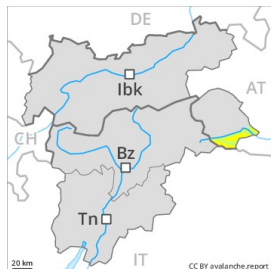
dp 4: cold following warm / warm following cold

15 to 30 cm of snow, and even more in some localities, fell. Over a wide area strong northwesterly wind. In the last two days extensive wind slabs formed in particular in gullies and bowls and behind abrupt changes in the terrain as well as above the tree line. In some places wind slabs are lying on soft layers. Avalanche prone weak layers exist in the centre of the snowpack, in particular above the tree line. This applies in all aspects. The snowpack will be subject to considerable local variations.

Tendency

As a consequence of fresh snow and strong wind the avalanche prone locations will become more prevalent on Wednesday.

Danger Level 2 - Moderate



Tendency: Constant avalanche danger →
on Thursday 03 01 2019



Wind-drifted
snow



Treeline

Hardly any snow is lying.

The fresh wind slabs represent the main danger. These are to be found in particular adjacent to ridgelines and in gullies and bowls as well as in the high Alpine regions. The avalanche prone locations are rare and are easy to recognise. At high altitude avalanche prone locations are more prevalent. Restraint should be exercised because avalanches can sweep people along and give rise to falls.

Snowpack

Danger patterns

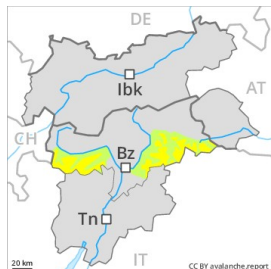
dp 6: cold, loose snow and wind

From a snow sport perspective, in most cases insufficient snow is lying.

Tendency

Fresh wind slabs represent the main danger.

Danger Level 2 - Moderate



Tendency: Constant avalanche danger →
on Thursday 03 01 2019



Wind-drifted
snow



Wind slabs require caution.

In all aspects the wind slabs have increased in size moderately. These can in some places be released by small loads. The avalanche prone locations are to be found in gullies and bowls above approximately 2000 m, and adjacent to ridgelines in all aspects. Mostly the avalanches are only small but in many cases easily released.

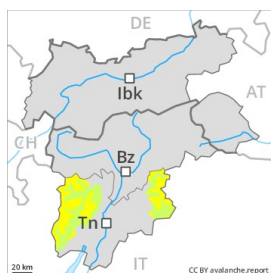
Snowpack

The wind slabs have bonded insufficiently with the old snowpack. The near-surface layers of the snowpack necessitate caution. The snowpack will be subject to considerable local variations. In steep terrain there is a danger of falling on the hard snow surface.

Tendency

The wind will be strong to storm force.

Danger Level 2 - Moderate



Tendency: Constant avalanche danger →
 on Thursday 03 01 2019



Wind-drifted
 snow



Persistent
 weak layer



The fresh wind slabs represent the main danger.

As a consequence of northerly wind, mostly small wind slabs formed in particular adjacent to ridgelines and in gullies and bowls. The wind slabs are in many cases rather small but can be released easily. At high altitudes and in high Alpine regions avalanche prone locations are more prevalent and the danger is greater. These avalanche prone locations are clearly recognisable to the trained eye. Apart from the danger of being buried, restraint should be exercised as well in view of the danger of avalanches sweeping people along and giving rise to falls. Maintaining distances between individuals is recommended.

Snowpack

The snowpack will be subject to considerable local variations. The mostly small wind slabs must be evaluated with care and prudence in all aspects. Isolated avalanche prone weak layers exist in the snowpack in particular on shady slopes. In steep terrain there is a danger of falling on the hard crust. Below approximately 2500 m a little snow is lying.

Tendency

Below approximately 2300 m from a snow sport perspective, in most cases insufficient snow is lying on south facing slopes.

Danger Level 1 - Low



Tendency: Constant avalanche danger →
on Thursday 03 01 2019



Wind-drifted
snow



Only a little snow is lying.

The fresh and older wind slabs represent the main danger. They are to be found especially adjacent to ridgelines and in gullies and bowls and generally at high altitudes. These avalanche prone locations are rather rare and are easy to recognise. Apart from the danger of being buried, restraint should be exercised as well in view of the danger of avalanches sweeping people along and giving rise to falls.

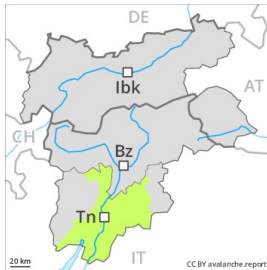
Snowpack

Below approximately 2300 m from a snow sport perspective, in most cases insufficient snow is lying.

Tendency

Stormy weather.

Danger Level 1 - Low



Tendency: Constant avalanche danger →
on Thursday 03 01 2019



Wind-drifted
snow



Hardly any snow is lying.

The fresh and somewhat older wind slabs represent the main danger. The wind slabs are to be found in particular adjacent to ridgelines and in gullies and bowls as well as in the high Alpine regions. The avalanche prone locations are rather rare and are easy to recognise. Restraint should be exercised because avalanches can sweep people along and give rise to falls.

Snowpack

From a snow sport perspective, in most cases insufficient snow is lying.