

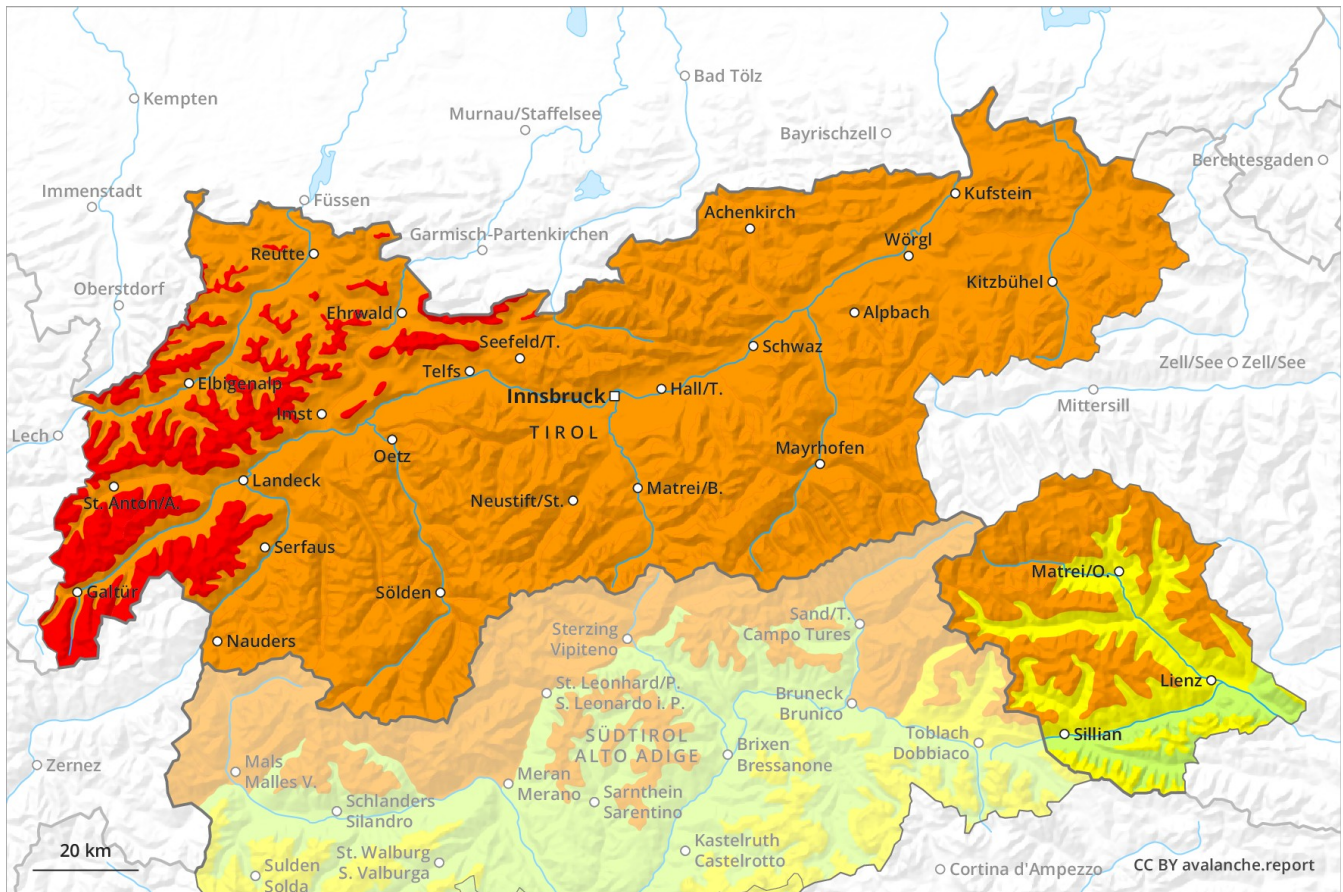
# Avalanche Forecast

## Thursday 03 01 2019

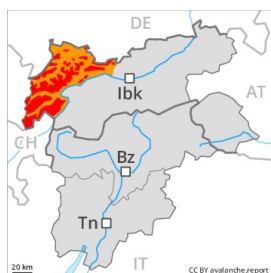
Published 02 01 2019, 17:00



Avalanche.report



## Danger Level 4 - High



**Tendency: Increasing avalanche danger**  
on Friday 04 01 2019



Wind-drifted  
snow



Treeline



New snow



Treeline

As the day progresses possibly danger level 4 (high) will be reached above approximately 2200 m.

As a consequence of fresh snow and a strong to storm force wind from northwesterly directions, extensive wind slabs formed in the last few days. Even single winter sport participants can release avalanches easily, including dangerously large ones. This applies in all aspects in particular above approximately 2200 m. At elevated altitudes avalanche prone locations are more prevalent. Weak layers in the old snowpack can be released easily, in particular at transitions from a shallow to a deep snowpack.

## Snowpack

### Danger patterns

dp 6: cold, loose snow and wind

dp 9: graupel blanketed with snow


A lot of snow has fallen over a wide area. In some regions strong northwesterly wind. In some cases wind slabs are lying on soft layers, especially on shady slopes and adjacent to ridgelines in all aspects. Individual weak layers exist in the centre of the old snowpack.

## Tendency

As a consequence of fresh snow and strong wind the avalanche prone locations will become more prevalent on Friday.

## Danger Level 3 - Considerable



**Tendency: Increasing avalanche danger**   
 on Friday 04 01 2019



Wind-drifted  
 snow



New snow



The conditions are very precarious for snow sport activities outside marked and open pistes. Fresh wind slabs represent the main danger, in particular above the tree line,, also in areas close to the tree line.

Further increase in avalanche danger as a consequence of fresh snow and wind. This applies in all aspects especially above the tree line, also in areas close to the tree line. Wind slabs can be released easily, even by a single winter sport participant,. Caution is to be exercised in particular on wind-loaded slopes as well as adjacent to ridgelines. The conditions are very precarious for winter sport activities outside marked and open pistes.

### Snowpack

**Danger patterns**

dp 6: cold, loose snow and wind

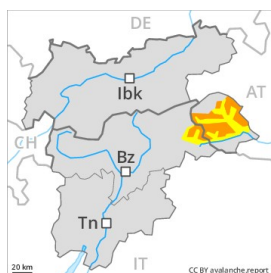
dp 9: graupel blanketed with snow

Over a wide area 50 to 70 cm of snow, and even more in some localities, has fallen in the last few days above approximately 1000 m. The fresh wind slabs represent the main danger. Over a wide area wind slabs are lying on soft layers. The extensive wind slabs of the last few days can be released easily. or in isolated cases naturally, in all aspects above the tree line. This also applies in areas close to the tree line. Faceted weak layers exist in the old snowpack here. This applies in all aspects especially above the tree line.

### Tendency

The snow sport conditions outside marked and open pistes remain precarious. As a consequence of fresh snow and strong wind the prevalence and size of the avalanche prone locations will increase on Friday.

## Danger Level 3 - Considerable



**Tendency: Increasing avalanche danger**  
 on Friday 04 01 2019



Wind-drifted  
 snow



Treeline



Persistent  
 weak layer



Treeline

The conditions are precarious for winter sport activities outside marked and open pistes. Wind slabs and weakly bonded old snow require caution.

Fresh wind slabs: As a consequence of fresh snow and a strong northwesterly wind, extensive wind slabs will form in particular in gullies and bowls and behind abrupt changes in the terrain as well as above the tree line. These can be released even by a single winter sport participant in all aspects, especially on very steep slopes above the tree line as well as in areas close to the tree line. At intermediate and high altitudes avalanche prone locations are more prevalent. Weakly bonded old snow above the tree line. Avalanches can to an increasing extent be released by a single winter sport participant and reach medium size. The avalanche prone locations are to be found on steep slopes of all aspects. Especially transitions from a shallow to a deep snowpack are unfavourable. Backcountry touring and other off-piste activities call for very extensive experience in the assessment of avalanche danger and great restraint.

### Snowpack

**Danger patterns**

dp 6: cold, loose snow and wind

dp 4: cold following warm / warm following cold

15 to 30 cm of snow, and even more in some localities, has fallen in the last few days. Over a wide area strong northwesterly wind. In the last few days extensive wind slabs formed in particular in gullies and bowls and behind abrupt changes in the terrain as well as above the tree line. In some places wind slabs are lying on soft layers. Avalanche prone weak layers exist in the centre of the snowpack, in particular above the tree line. This applies in all aspects. The snowpack will be subject to considerable local variations.

### Tendency

As a consequence of fresh snow and strong wind the avalanche prone locations will become more prevalent on Friday.

## Danger Level 3 - Considerable



**Tendency: Increasing avalanche danger**  
 on Friday 04 01 2019



Wind-drifted  
 snow



Treeline



Persistent  
 weak layer



Treeline

Fresh wind slabs are to be evaluated critically. Weak layers in the old snowpack necessitate defensive route selection.

As a consequence of fresh snow and a strong to storm force northwesterly wind, avalanche prone wind slabs formed in particular adjacent to ridgelines and in gullies and bowls as well as above the tree line. Weakly bonded old snow: Even single winter sport participants can release avalanches with increasing likelihood. Caution is to be exercised in all aspects in particular above the tree line as well as adjacent to ridgelines. The avalanche prone locations are to be found on steep slopes of all aspects. On very steep west, north and east facing slopes the avalanche prone locations are more prevalent. Remotely triggered avalanches are to be expected. Especially transitions from a shallow to a deep snowpack are unfavourable. Backcountry touring and other off-piste activities call for extensive experience in the assessment of avalanche danger and great restraint.

### Snowpack

**Danger patterns**

dp 4: cold following warm / warm following cold

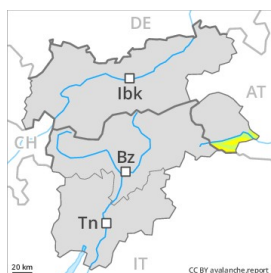
dp 9: graupel blanketed with snow

Since Sunday, 30 December extensive wind slabs formed in particular above the tree line. The fresh wind slabs are lying on weak layers. Avalanche prone weak layers exist in the old snowpack. This applies in all aspects especially above the tree line as well as adjacent to ridgelines. The snowpack will be subject to considerable local variations.

### Tendency

The avalanche danger is close to the boundary with danger level 4 (high).

## Danger Level 2 - Moderate



**Tendency: Constant avalanche danger** →  
on Friday 04 01 2019



Wind-drifted  
snow



Treeline

### Hardly any snow is lying.

The fresh wind slabs represent the main danger. These are to be found in particular adjacent to ridgelines and in gullies and bowls as well as in the high Alpine regions. The avalanche prone locations are rare and are easy to recognise. At high altitude avalanche prone locations are more prevalent. Restraint should be exercised because avalanches can sweep people along and give rise to falls.

### Snowpack

**Danger patterns**

dp 6: cold, loose snow and wind

From a snow sport perspective, in most cases insufficient snow is lying.

### Tendency

Fresh wind slabs represent the main danger.