

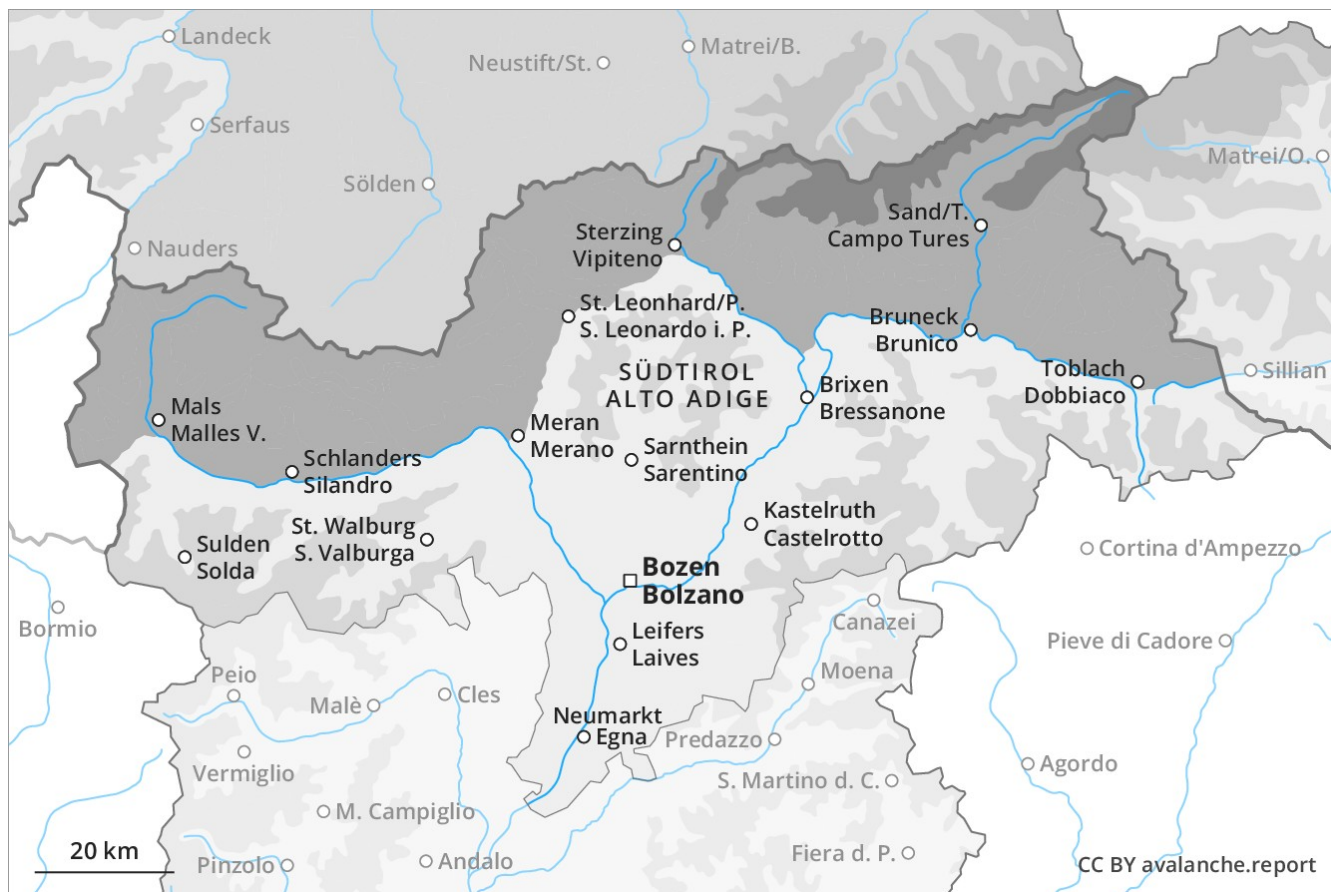
Avalanche Forecast

Saturday 05 01 2019

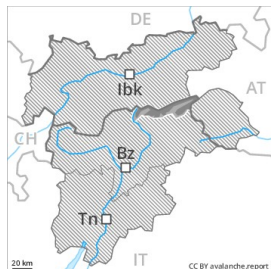
Published 04 01 2019, 17:00



Avalanche.report



Danger Level 4 - High



Tendency: Constant avalanche danger →
on Sunday 06 01 2019



Wind-drifted
snow



The conditions are very precarious.

Remotely triggered and natural avalanches are possible. In all aspects and from starting zones at higher altitudes numerous large and, in isolated cases, very large dry slab avalanches are possible as a consequence of fresh snow and stormy weather. Mostly avalanches are shallow and can be released easily by a single winter sport participant. The avalanche prone locations are widespread and are barely recognisable because of the poor visibility. Ski touring and other off-piste activities, including snowshoe hiking, call for great caution and restraint. Exposed transportation routes can be endangered very occasionally. The peak of avalanche activity will be reached from the middle of the day probably.

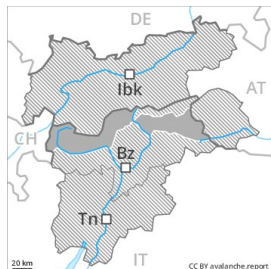
Snowpack

The sometimes deep wind slabs of the last six days are lying on the unfavourable surface of an old snowpack in all aspects. In particular in the Southern Zillertal Alps and High Tauern, in the Durreck Range they will increase in size substantially. Also transitions from a shallow to a deep snowpack are especially dangerous. For those venturing off piste a very precarious avalanche situation will prevail.

Tendency

The wind will be storm force. Light snowfall.

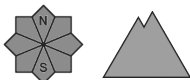
Danger Level 3 - Considerable



Tendency: Constant avalanche danger →
on Sunday 06 01 2019



Wind-drifted
snow



Extensive experience in the assessment of avalanche danger is required.

As a consequence of fresh snow and stormy weather the already large wind slabs will increase in size once again. These can in many cases be released by small loads or triggered naturally. Especially on wind-loaded slopes medium-sized natural avalanches must be expected in many places. The avalanche prone locations are to be found on steep slopes in all altitude zones. The conditions are dangerous for backcountry touring and other off-piste activities.

Snowpack

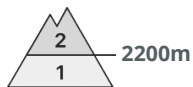
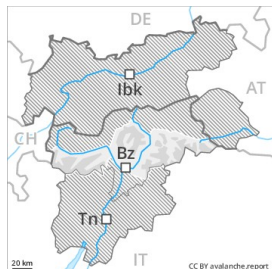
In particular along the border with Austria in some localities up to 15 cm of snow, and up to 20 cm in some localities, will fall. The northerly wind will transport the fresh snow. Fresh snow and wind slabs are lying on soft layers. Isolated avalanche prone weak layers exist in the old snowpack. The snowpack will be weakly bonded over a wide area. Medium-sized and, in isolated cases, large dry slab avalanches are possible in particular adjacent to ridgelines and in gullies and bowls.

Tendency

The wind will be storm force. Especially in the north light snowfall.



Danger Level 2 - Moderate



Tendency: Constant avalanche danger →
on Sunday 06 01 2019



Wind-drifted
snow



Wind slabs require caution.

In all aspects the wind slabs have increased in size moderately. These can in some places be released by small loads. The avalanche prone locations are to be found in gullies and bowls above approximately 2000 m, and adjacent to ridgelines in all aspects. Mostly the avalanches are only small but in many cases easily released.

Snowpack

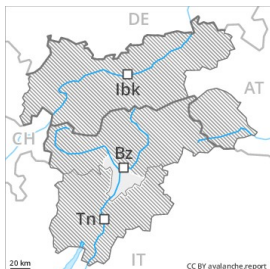
The wind slabs have bonded insufficiently with the old snowpack. The near-surface layers of the snowpack necessitate caution. The snowpack will be subject to considerable local variations. In steep terrain there is a danger of falling on the hard snow surface.

Tendency

The wind will be strong to storm force.



Danger Level 1 - Low



Tendency: Constant avalanche danger →
on Sunday 06 01 2019



Wind-drifted
snow



Only a little snow is lying.

The fresh and older wind slabs represent the main danger. They are to be found especially adjacent to ridgelines and in gullies and bowls and generally at high altitudes. These avalanche prone locations are rather rare and are easy to recognise. Apart from the danger of being buried, restraint should be exercised as well in view of the danger of avalanches sweeping people along and giving rise to falls.

Snowpack

The snowpack will be subject to considerable local variations above approximately 2300 m. Below approximately 2300 m from a snow sport perspective, in most cases insufficient snow is lying. The surface of the snowpack has frozen to form a strong crust. There is a danger of falling on the icy crust.

Tendency

Stormy weather.