

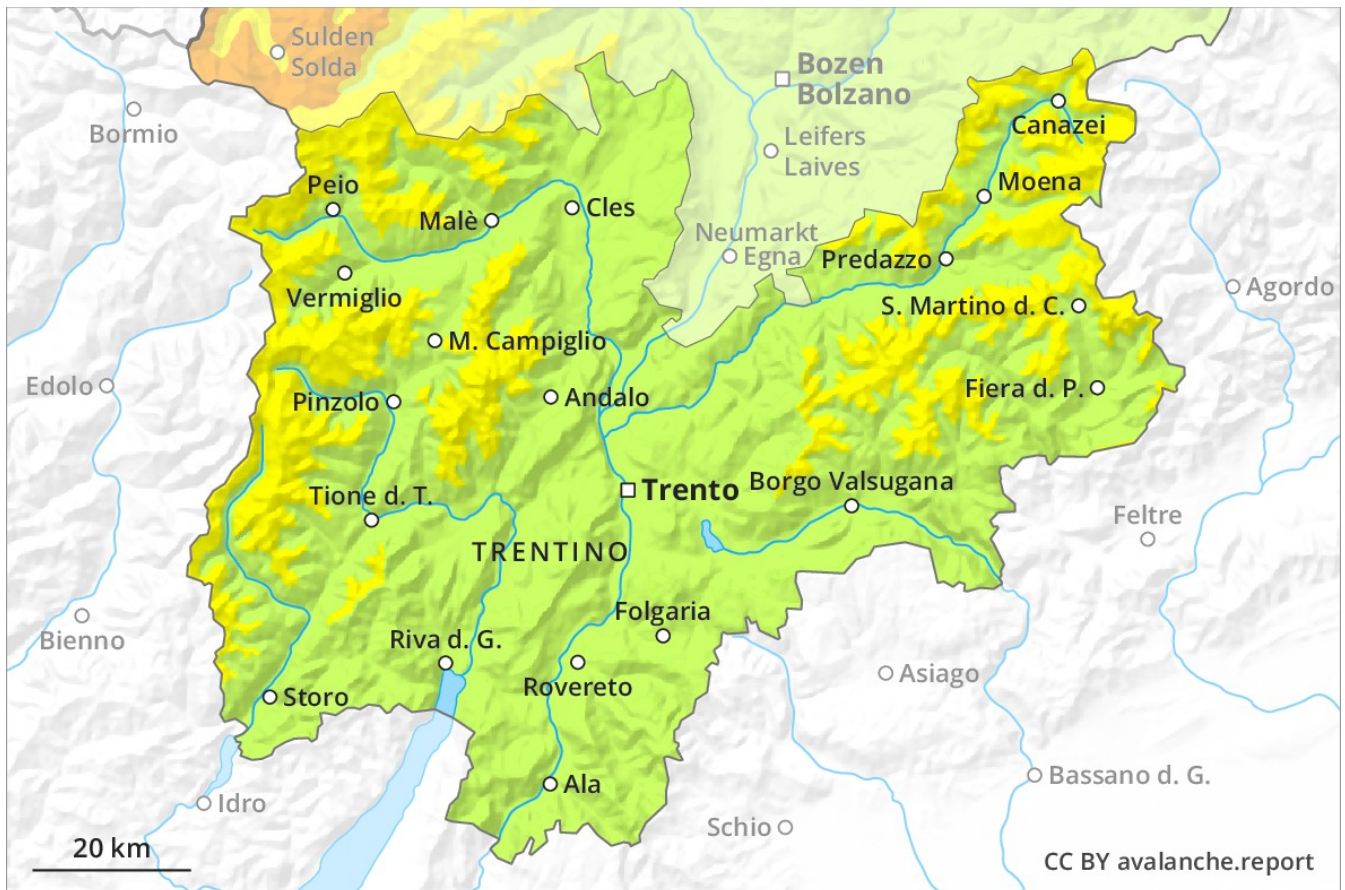
# Avalanche Forecast

## Thursday 10 01 2019

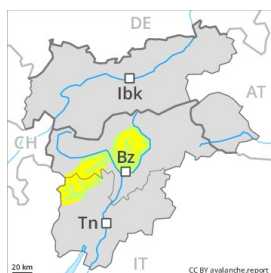
Published 09 01 2019, 17:00



Avalanche.report



## Danger Level 2 - Moderate



**Tendency: Constant avalanche danger** →  
on Friday 11 01 2019



Wind-drifted  
snow



Treeline

### Fresh wind slabs require caution.

The fresh wind slabs of the last few days can be released even by a single winter sport participant in all aspects above approximately 2000 m, especially at their margins. The avalanche prone locations are to be found in gullies and bowls above approximately 2000 m, and adjacent to ridgelines in all aspects. In these regions the avalanches are mostly medium-sized. The prevalence of avalanche prone locations and likelihood of triggering will increase at high altitude and in the high Alpine regions. Individual natural avalanches are possible. In regions neighbouring those that are subject to danger level 3 (considerable) avalanche prone locations are more prevalent and the danger is greater.

### Snowpack

#### Danger patterns

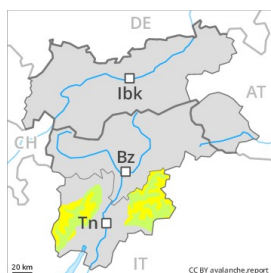
dp 6: cold, loose snow and wind

The sometimes storm force wind will transport the fresh snow significantly. In some cases the wind slabs have bonded poorly with the old snowpack. The snowpack will be subject to considerable local variations. In steep terrain there is a danger of falling on the hard snow surface.

### Tendency

Moderate, level 2.

## Danger Level 2 - Moderate



**Tendency: Constant avalanche danger** →  
on Friday 11 01 2019



Wind-drifted  
snow



Persistent  
weak layer



The wind slabs represent the main danger.

As a consequence of northerly wind, mostly small wind slabs formed in particular adjacent to ridgelines and in gullies and bowls as well as above approximately 2300 m. They are in many cases rather small but can only be released by large loads in most cases. At high altitudes and in high Alpine regions avalanche prone locations are more prevalent and the danger is greater. These avalanche prone locations are clearly recognisable to the trained eye. Apart from the danger of being buried, restraint should be exercised as well in view of the danger of avalanches sweeping people along and giving rise to falls.

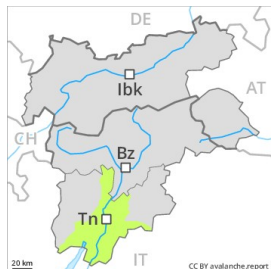
### Snowpack

In steep terrain there is a danger of falling on the hard crust. Below approximately 2300 m a little snow is lying. The snowpack will be subject to considerable local variations above approximately 2500 m. The mostly small wind slabs must be evaluated with care and prudence in all aspects above approximately 2500 m. Isolated avalanche prone weak layers exist in the snowpack in particular on shady slopes.

### Tendency

The avalanche danger will persist.

## Danger Level 1 - Low



**Tendency: Constant avalanche danger** →  
on Friday 11 01 2019



Wind-drifted  
snow



In all altitude zones a little snow is lying. Wind slabs require caution.

The wind slabs represent the main danger. They are rather rare and are easy to recognise. The avalanche prone locations are to be found in particular adjacent to ridgelines and in gullies and bowls in northwest to north to east facing aspects above approximately 2300 m. The mostly small wind slabs can be released by a single winter sport participant in isolated cases. Restraint should be exercised because avalanches can sweep people along and give rise to falls.

### Snowpack

From a snow sport perspective, in most cases insufficient snow is lying below approximately 2300 m.

### Tendency

The avalanche danger will persist.