

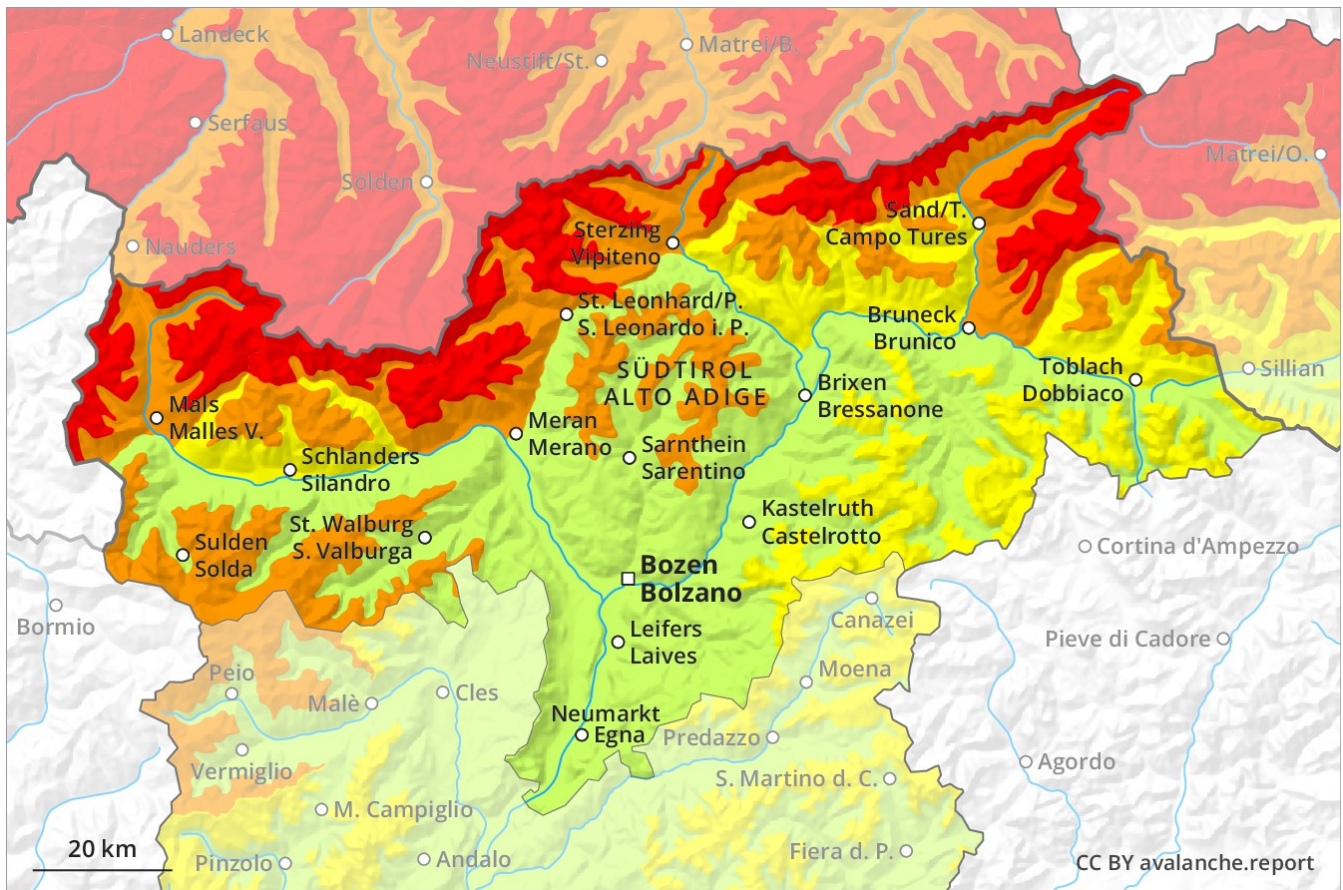
Avalanche Forecast

Tuesday 15 01 2019

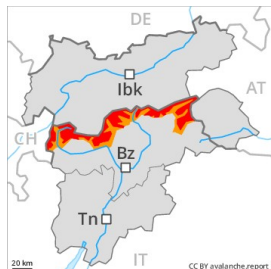
Published 14 01 2019, 17:00



Avalanche.report



Danger Level 4 - High



Tendency: Decreasing avalanche danger
on Wednesday 16 01 2019



New snow



Wind-drifted
snow



In the regions with a lot of snow more slab avalanches are to be expected, even very large ones in isolated cases.

In the regions exposed to heavier precipitation more large and, in isolated cases, very large avalanches are to be expected as a consequence of fresh snow and strong wind. On steep grassy slopes a large number of medium-sized and, in isolated cases, large gliding avalanches are possible below approximately 2400 m. Caution is to be exercised in areas with glide cracks. The conditions are very dangerous for winter sport activities outside marked and open pistes. This also applies in areas close to the tree line and below the tree line. Precautionary closures of transportation routes may be necessary. Closures must be respected and safety instructions of the authorities must be followed.

Snowpack

Danger patterns

dp 6: cold, loose snow and wind

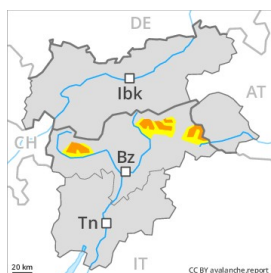
dp 2: gliding snow

In particular along the border with Tirol 20 to 30 cm of snow, and up to 40 cm in some localities, will fall. The wind will be strong. Weak layers in the upper part of the snowpack represent the main danger. The fresh snow and wind slabs are lying on the unfavourable surface of an old snowpack in all aspects. This applies in all altitude zones.

Tendency

Gradual decrease in avalanche danger as a consequence of the ceasing of precipitation.

Danger Level 3 - Considerable



Tendency: Decreasing avalanche danger
 on Wednesday 16 01 2019



Wind-drifted
 snow



Persistent
 weak layer



In some regions decrease in avalanche danger as the snowfall eases.

The wind slabs are prone to triggering. These can in many cases be released by small loads. Especially in starting zones where no previous releases have taken place large natural avalanches must be expected in isolated cases. In particular transitions from a shallow to a deep snowpack are unfavourable. They are barely recognisable because of the poor visibility. In particular in regions neighbouring those that are subject to danger level 4 (high) avalanche prone locations are more prevalent and the danger is slightly greater. The conditions are critical for backcountry touring and other off-piste activities.

Snowpack

Danger patterns

dp 6: cold, loose snow and wind

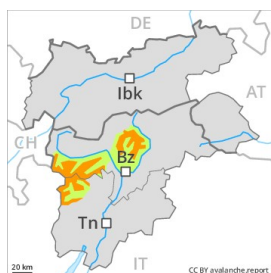
dp 4: cold following warm / warm following cold

10 to 20 cm of snow, and even more in some localities, will fall. The strong wind will transport the fresh snow significantly. Over a wide area fresh snow and wind slabs are lying on soft layers. Isolated avalanche prone weak layers exist in the old snowpack. The snowpack will be quite prone to triggering.

Tendency

Gradual decrease in avalanche danger as the snowfall eases. Fresh wind slabs represent the main danger.

Danger Level 3 - Considerable



Tendency: Constant avalanche danger →
on Wednesday 16 01 2019



Wind-drifted
snow



Treeline

Fresh wind slabs require caution.

As a consequence of fresh snow and strong wind the wind slabs have increased in size substantially in the last few days. These can in many cases be released by small loads. Especially on wind-loaded slopes medium-sized natural avalanches must be expected in isolated cases. The avalanche prone locations are to be found in particular on steep slopes above the tree line. They are barely recognisable because of the poor visibility. The conditions are sometimes critical for backcountry touring and other off-piste activities.

Snowpack

Danger patterns

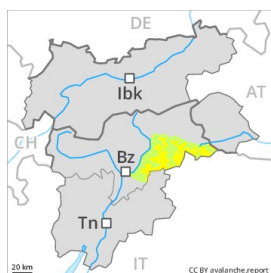
dp 6: cold, loose snow and wind

10 to 20 cm of snow, and even more in some localities, will fall. The sometimes strong wind will transport the fresh snow significantly. In some cases fresh snow and wind slabs are lying on soft layers. Isolated avalanche prone weak layers exist in the old snowpack. The snowpack will be generally prone to triggering.

Tendency

Fresh wind slabs represent the main danger.

Danger Level 2 - Moderate



Tendency: Constant avalanche danger →
on Wednesday 16 01 2019



Wind-drifted
snow



Treeline

Fresh wind slabs require caution.

In particular in the regions exposed to heavier precipitation the wind slabs will increase in size additionally. These can be released by small loads and reach medium size. The avalanche prone locations are to be found in gullies and bowls above approximately 2000 m, and adjacent to ridgelines in all aspects. The prevalence of avalanche prone locations and likelihood of triggering will increase at high altitude and in the high Alpine regions. Individual natural avalanches are possible.

Snowpack

Danger patterns

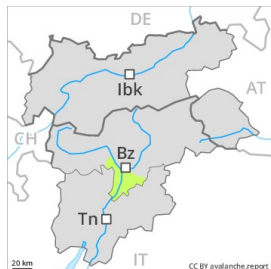
dp 6: cold, loose snow and wind

5 to 10 cm of snow. will fall. The strong wind will transport the snow. In some cases the wind slabs have bonded poorly with the old snowpack. The snowpack will be subject to considerable local variations.

Tendency

Moderate, level 2.

Danger Level 1 - Low



Tendency: Constant avalanche danger →
on Wednesday 16 01 2019



Wind-drifted
snow



The wind slabs represent the main danger.

The wind slabs are to be found especially adjacent to ridgelines and in gullies and bowls and generally at high altitudes. These avalanche prone locations are rather rare and are easy to recognise. Mostly the avalanches are small but can be released in some cases by a single winter sport participant. Apart from the danger of being buried, restraint should be exercised as well in view of the danger of avalanches sweeping people along and giving rise to falls.

Snowpack

0 to 5 cm of snow, and even more in some localities, will fall. The sometimes storm force wind will transport the fresh snow. The snowpack will be subject to considerable local variations. In some places wind slabs are lying on a weakly bonded old snowpack. Only a little snow is lying.

Tendency

Low, level 1.