

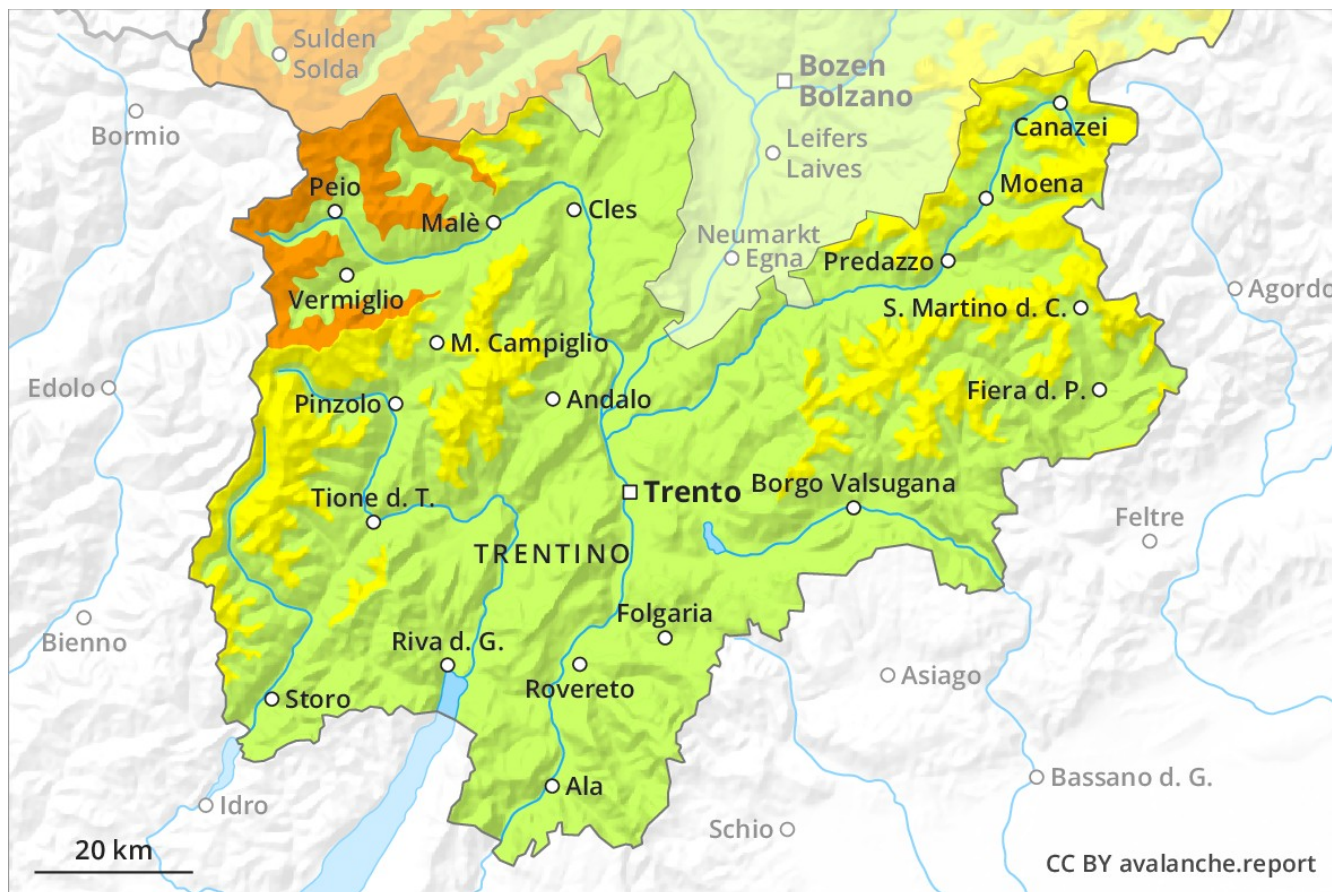
Avalanche Forecast

Tuesday 15 01 2019

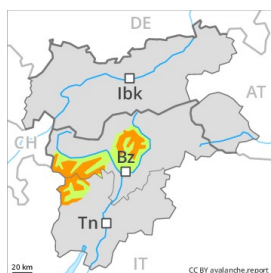
Published 14 01 2019, 17:00



Avalanche.report



Danger Level 3 - Considerable



Tendency: Constant avalanche danger →
on Wednesday 16 01 2019



Wind-drifted
snow



Treeline

Fresh wind slabs require caution.

As a consequence of fresh snow and strong wind the wind slabs have increased in size substantially in the last few days. These can in many cases be released by small loads. Especially on wind-loaded slopes medium-sized natural avalanches must be expected in isolated cases. The avalanche prone locations are to be found in particular on steep slopes above the tree line. They are barely recognisable because of the poor visibility. The conditions are sometimes critical for backcountry touring and other off-piste activities.

Snowpack

Danger patterns

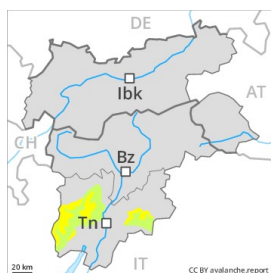
dp 6: cold, loose snow and wind

10 to 20 cm of snow, and even more in some localities, will fall. The sometimes strong wind will transport the fresh snow significantly. In some cases fresh snow and wind slabs are lying on soft layers. Isolated avalanche prone weak layers exist in the old snowpack. The snowpack will be generally prone to triggering.

Tendency

Fresh wind slabs represent the main danger.

Danger Level 2 - Moderate



Tendency: Constant avalanche danger →
on Wednesday 16 01 2019



Wind-drifted
snow



Persistent
weak layer



The wind slabs represent the main danger.

As a consequence of northerly wind, mostly small wind slabs formed in particular adjacent to ridgelines and in gullies and bowls as well as above approximately 2300 m. They are in many cases small and can only be released by large loads in most cases. The avalanche prone locations are rather rare and are clearly recognisable to the trained eye. In particular at high altitude avalanche prone locations are more prevalent and the danger is greater. Apart from the danger of being buried, restraint should be exercised as well in view of the danger of avalanches sweeping people along and giving rise to falls.

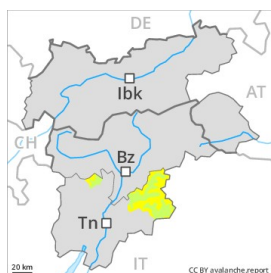
Snowpack

Below approximately 2300 m a little snow is lying. The mostly small wind slabs must be evaluated with care and prudence in all aspects above approximately 2500 m. Isolated avalanche prone weak layers exist in the snowpack in particular on shady slopes. In steep terrain there is a danger of falling on the hard crust.

Tendency

The avalanche danger will persist.

Danger Level 2 - Moderate

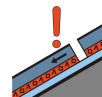


Tendency: Constant avalanche danger →

on Wednesday 16 01 2019



Wind-drifted
snow



Persistent
weak layer



Fresh snow and wind slabs require caution.

The fresh snow and wind slabs of Monday represent the main danger. The mostly small wind slabs of the last few days can be released by a single winter sport participant in isolated cases in all aspects above approximately 2200 m. The avalanche prone locations are to be found in gullies and bowls, and adjacent to ridgelines in all aspects. In these regions the avalanches are mostly medium-sized. In particular in the Maddalene and in the regions neighbouring those that are subject to danger level 3 (considerable) and above approximately 2500 m avalanche prone locations are more prevalent and the danger is greater.

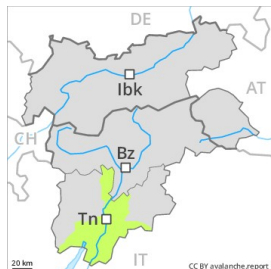
Snowpack

In many cases fresh snow and wind slabs are lying on a hard crust. The mostly small wind slabs are covered with fresh snow in some cases and therefore difficult to recognise. Faceted weak layers exist in the snowpack especially on steep, rather lightly snow-covered shady slopes. Below approximately 2000 m thus far only a little snow is lying.

Tendency

Moderate, level 2.

Danger Level 1 - Low



Tendency: Constant avalanche danger →
on Wednesday 16 01 2019



Wind-drifted
snow



In all regions from a snow sport perspective, in most cases insufficient snow is lying.

The mostly small wind slabs represent the main danger. These are to be found especially adjacent to ridgelines and in gullies and bowls and generally at high altitudes. The avalanche prone locations are rather rare and are easy to recognise. Mostly the avalanches are small and can be released by large loads. Apart from the danger of being buried, restraint should be exercised as well in view of the danger of avalanches sweeping people along and giving rise to falls.

Snowpack

The snowpack remains generally well bonded. Below approximately 1800 m only a little snow is lying.

Tendency

Low, level 1.