

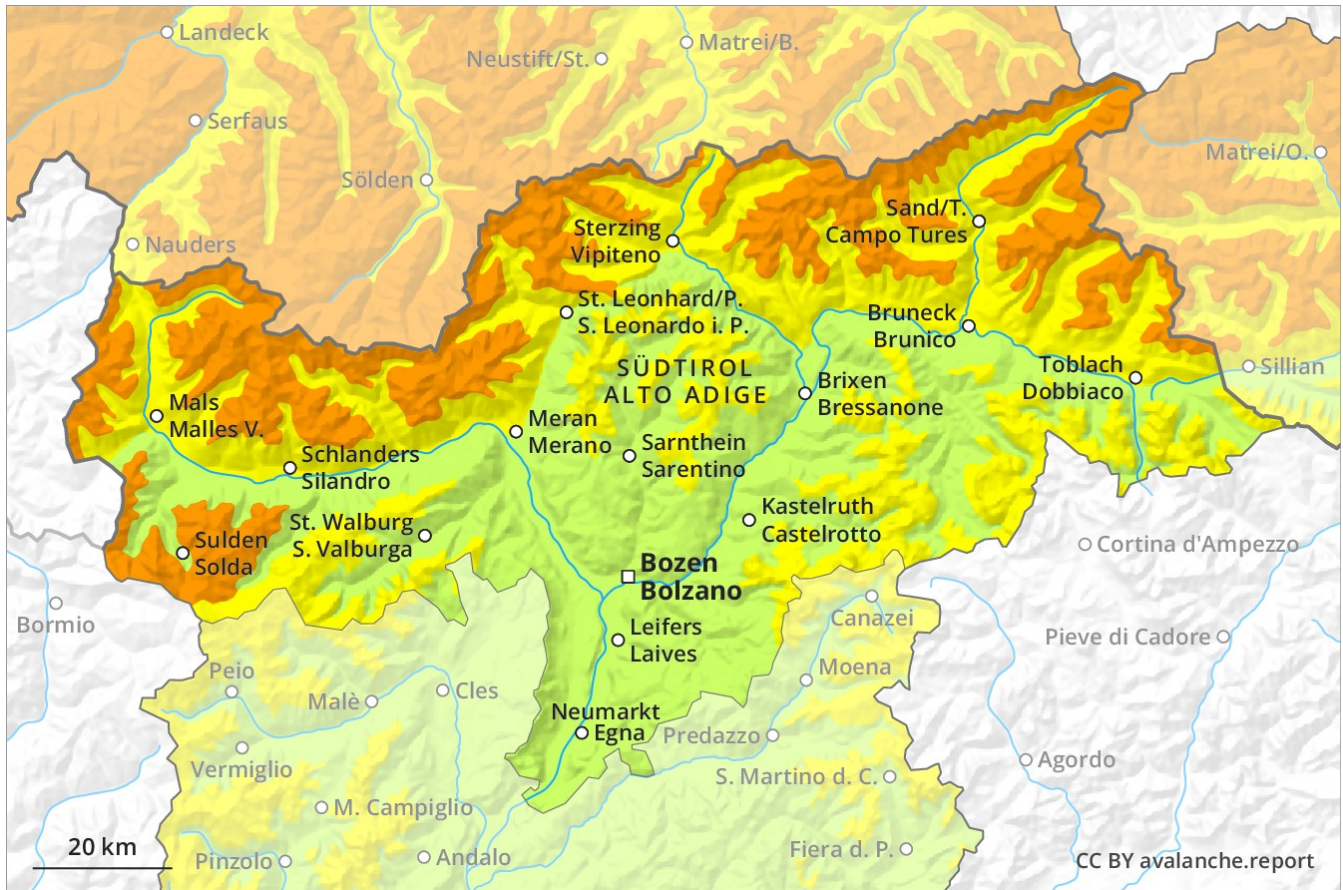
Avalanche Forecast

Thursday 17 01 2019

Published 16 01 2019, 17:00



Avalanche.report



Danger Level 3 - Considerable



Tendency: Constant avalanche danger →
on Friday 18 01 2019



Wind-drifted
snow



Treeline

The sometimes large wind slabs represent the main danger.

As a consequence of fresh snow and strong wind the wind slabs have increased in size additionally in the last few days. Even single backcountry tourers or freeriders can release avalanches in many places, including dangerously large ones. The avalanche prone locations are to be found in particular on steep slopes above the tree line. They are widespread but are clearly recognisable to the trained eye. The conditions are sometimes unfavourable for backcountry touring and other off-piste activities.

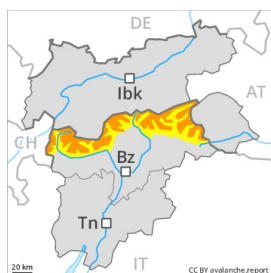
Snowpack

In some cases fresh snow and wind slabs are lying on soft layers. Isolated avalanche prone weak layers exist in the old snowpack. The snowpack will be generally prone to triggering.

Tendency

Fresh wind slabs represent the main danger.

Danger Level 3 - Considerable



Tendency: Constant avalanche danger →
on Friday 18 01 2019



Wind-drifted
snow



Treeline



Persistent
weak layer



For those venturing off piste a dangerous avalanche situation will be encountered over a wide area.

The extensive wind slabs of last week are lying on weak layers. The deep wind slabs can be released very easily. Whumpfung sounds and the formation of shooting cracks when stepping on the snowpack serve as an alarm indicating the danger. On steep grassy slopes individual small and medium-sized gliding avalanches are possible below approximately 2400 m.

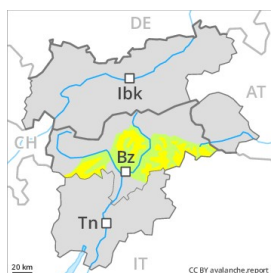
Snowpack

The somewhat older wind slabs are lying on soft layers in all aspects. Avalanche prone weak layers exist in the centre of the old snowpack in all aspects. In some cases the wind slabs have bonded still only poorly with each other and the old snowpack. In some cases avalanches can penetrate even deep layers and reach large size in isolated cases.

Tendency

In some localities some fresh snow.

Danger Level 2 - Moderate



Tendency: Constant avalanche danger →

on Friday 18 01 2019



Wind-drifted
snow



Treeline

Fresh wind slabs require caution.

In particular adjacent to ridgelines and in gullies and bowls as well as in high Alpine regions mostly small wind slabs formed. These can be released by small loads. The prevalence of avalanche prone locations and likelihood of triggering will increase at high altitude and in the high Alpine regions.

Snowpack

In some cases the wind slabs have bonded poorly with the old snowpack. They are barely recognisable because of the poor visibility. The snowpack will be subject to considerable local variations.

Tendency

Moderate, level 2.

Danger Level 1 - Low



Tendency: Constant avalanche danger →
on Friday 18 01 2019



Wind-drifted
snow



The wind slabs represent the main danger.

The wind slabs are to be found especially adjacent to ridgelines and in gullies and bowls and generally at high altitudes. These avalanche prone locations are rather rare and are easy to recognise. Mostly the avalanches are small but can be released in some cases by a single winter sport participant. Apart from the danger of being buried, restraint should be exercised as well in view of the danger of avalanches sweeping people along and giving rise to falls.

Snowpack

The snowpack will be subject to considerable local variations. In some places wind slabs are lying on a weakly bonded old snowpack. Only a little snow is lying.

Tendency

Low, level 1.