

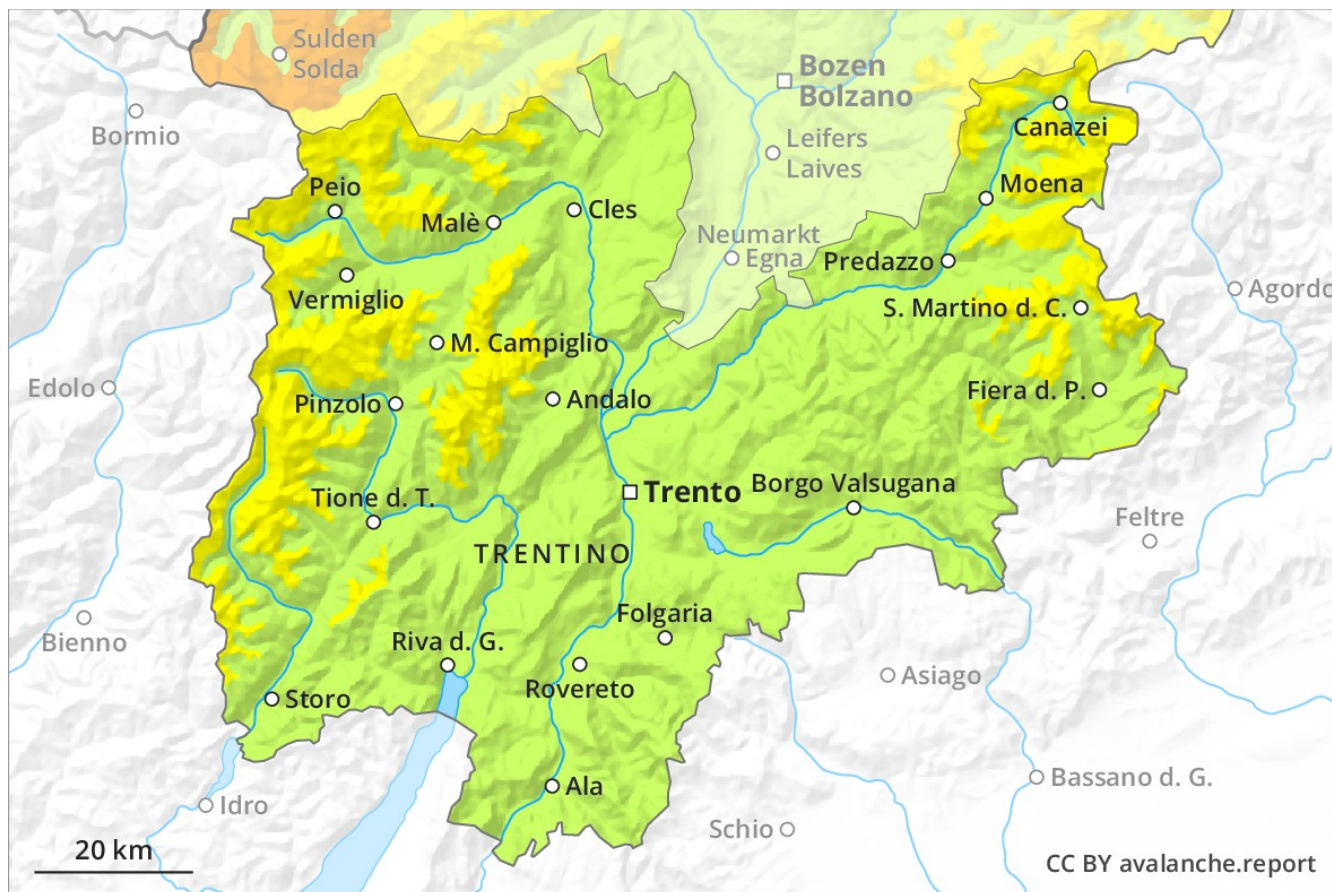
# Avalanche Forecast

## Thursday 17 01 2019

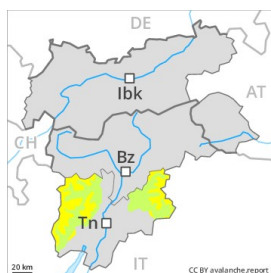
Published 16 01 2019, 17:00



Avalanche.report



## Danger Level 2 - Moderate



**Tendency: Constant avalanche danger** →

on Friday 18 01 2019



Wind-drifted snow



Persistent weak layer



### Fresh wind slabs represent the main danger.

The fresh snow and wind slabs of the last few days are lying on top of a quite favourable old snowpack. In particular on wind-loaded slopes medium-sized natural avalanches must be expected in isolated cases. The mostly small wind slabs of the last few days can be released by a single winter sport participant in isolated cases in all aspects above approximately 2200 m. The avalanche prone locations are to be found in gullies and bowls, and adjacent to ridgelines in all aspects. These places are quite prevalent but are clearly recognisable to the trained eye. In particular on the Cevedale, in the Maddalene and above approximately 2800 m avalanche prone locations are more prevalent and the danger is greater.

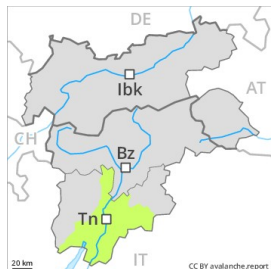
### Snowpack

The fresh snow and wind slabs of the last few days are lying on the quite favourable surface of an old snowpack in particular on east to south to southwest facing aspects. Faceted weak layers exist in the snowpack especially on steep, rather lightly snow-covered shady slopes. Below approximately 2000 m thus far only a little snow is lying.

### Tendency

Moderate, level 2.

## Danger Level 1 - Low



**Tendency: Constant avalanche danger** →  
on Friday 18 01 2019



Wind-drifted  
snow



Only a little snow is lying on north and northeast facing slopes.

The mostly small wind slabs have bonded quite well with the old snowpack especially on sunny slopes. These are to be found especially adjacent to ridgelines and in gullies and bowls and generally at high altitudes. The avalanche prone locations are rather rare and are easy to recognise. Mostly the avalanches are small and can be released by large loads. Apart from the danger of being buried, restraint should be exercised as well in view of the danger of avalanches sweeping people along and giving rise to falls.

### Snowpack

The snowpack remains generally well bonded. In all regions from a snow sport perspective, in most cases insufficient snow is lying.

### Tendency

Low, level 1.