

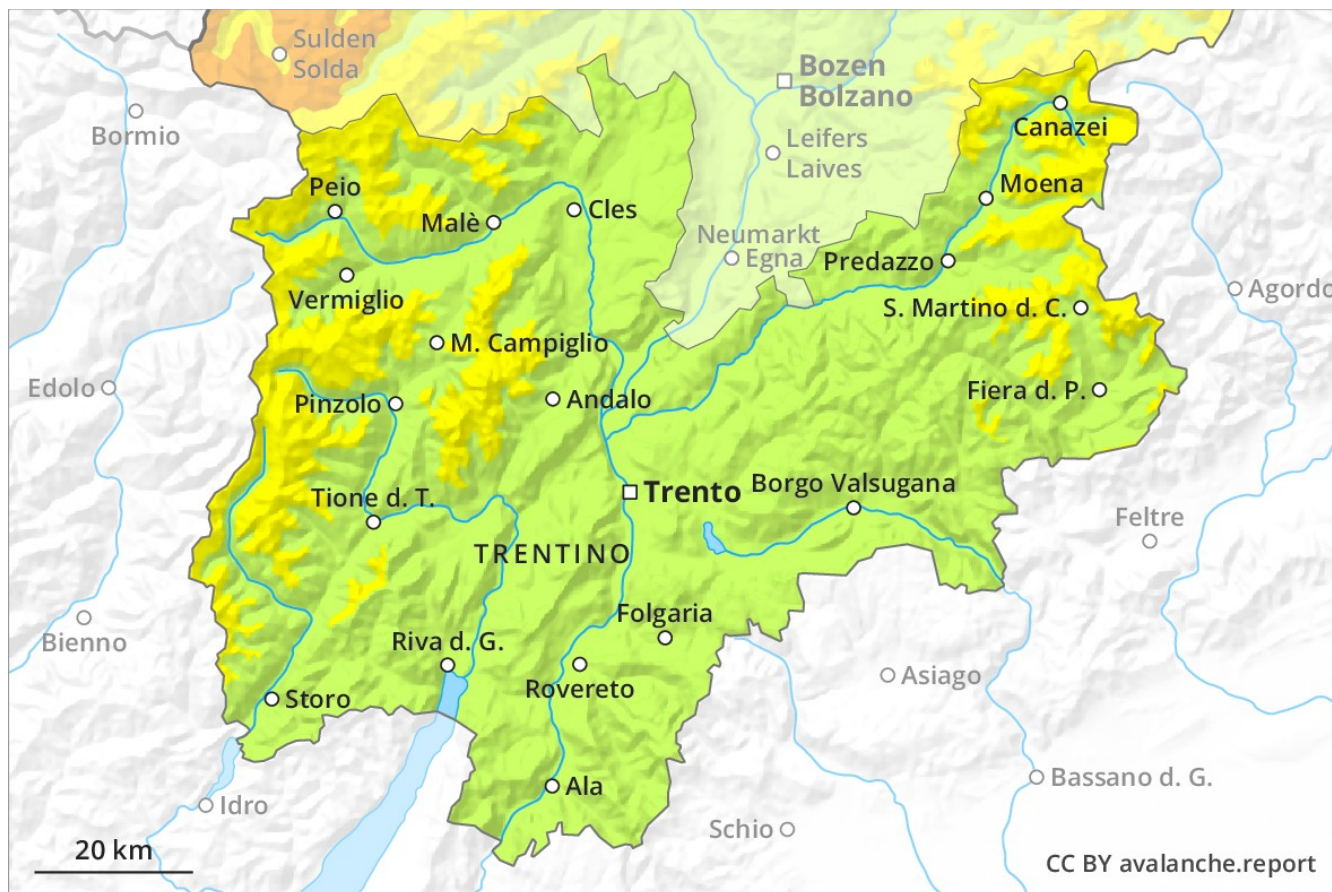
Avalanche Forecast

Sunday 20 01 2019

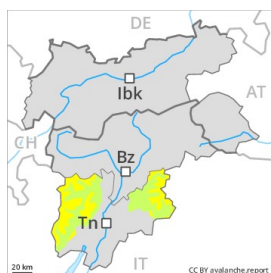
Published 19 01 2019, 17:00



Avalanche.report



Danger Level 2 - Moderate



Tendency: Constant avalanche danger →

on Monday 21 01 2019



Wind-drifted
snow



Persistent
weak layer



Old wind slabs are to be evaluated critically.

Hardly any more natural avalanches are to be expected. In some cases the various wind slabs have bonded still only poorly with the old snowpack. The mostly small wind slabs can be released by a single winter sport participant in isolated cases in all aspects above approximately 2200 m. The avalanche prone locations are to be found in gullies and bowls, and adjacent to ridgelines in all aspects. These places are quite prevalent but are clearly recognisable to the trained eye. In particular above approximately 2700 m avalanche prone locations are more widespread and the danger is greater.

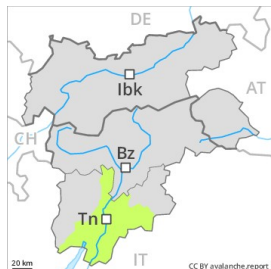
Snowpack

The fresh snow and wind slabs of the last few days are lying on the quite favourable surface of an old snowpack in particular on east to south to southwest facing aspects. Faceted weak layers exist in the snowpack especially on steep, rather lightly snow-covered shady slopes. Below approximately 2000 m thus far only a little snow is lying. In some places fresh snow and wind slabs are lying on a hard crust.

Tendency

Moderate, level 2.

Danger Level 1 - Low



Tendency: Constant avalanche danger →
on Monday 21 01 2019



Wind-drifted
snow



Only a little snow is lying on north and northeast facing slopes.

The mostly small wind slabs have bonded quite well with the old snowpack especially on sunny slopes. These are to be found especially adjacent to ridgelines and in gullies and bowls and generally at high altitudes. The avalanche prone locations are rather rare and are easy to recognise. Mostly the avalanches in these locations are small and can be released by large loads. Apart from the danger of being buried, restraint should be exercised in particular in view of the danger of avalanches sweeping people along and giving rise to falls.

Snowpack

In all regions from a snow sport perspective, in most cases insufficient snow is lying. The snowpack remains generally well bonded.

Tendency

Low, level 1.