

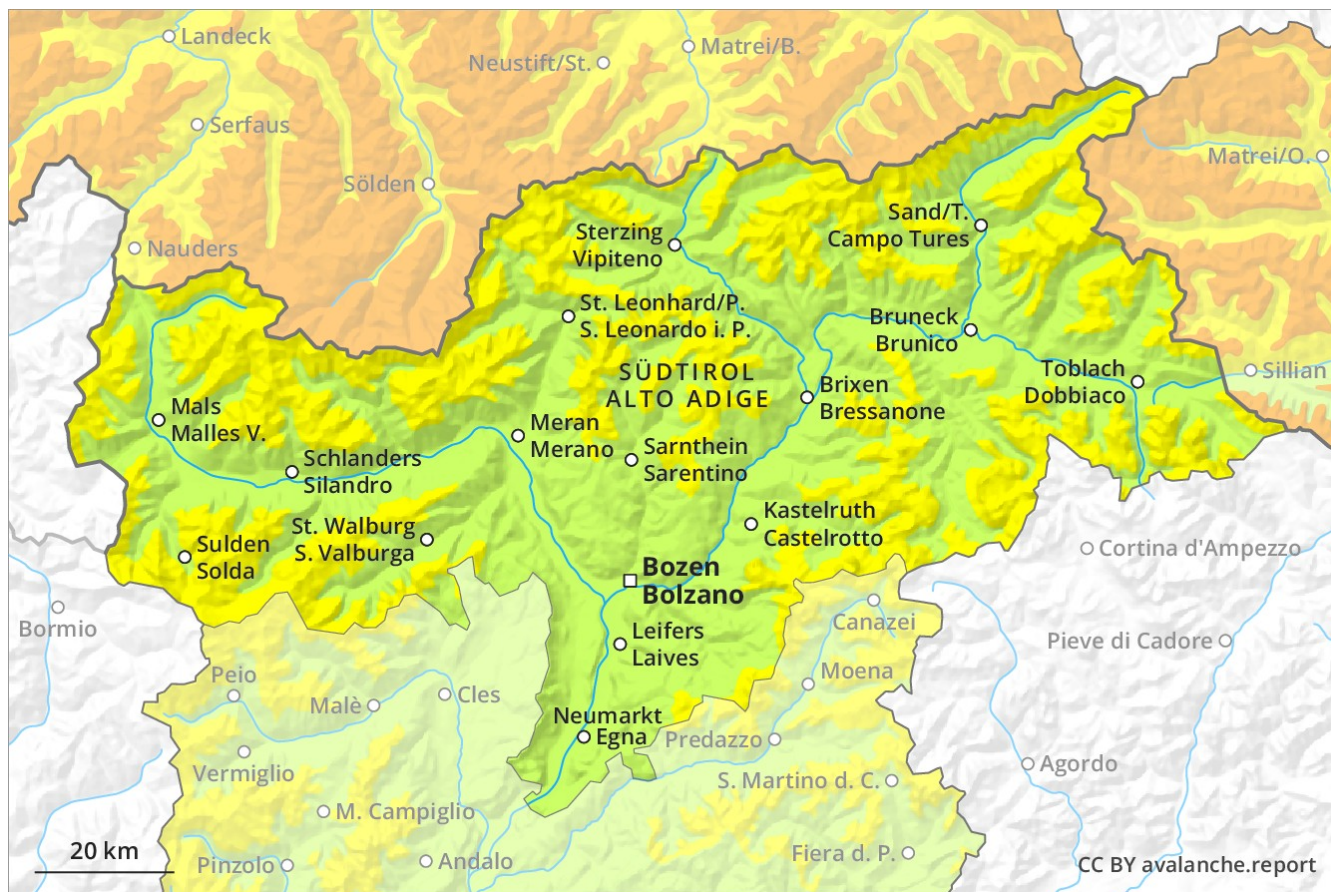
# Avalanche Forecast

## Tuesday 29 01 2019

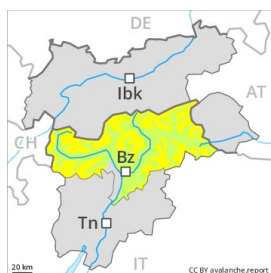
Published 28 01 2019, 17:00



Avalanche.report



## Danger Level 2 - Moderate



**Tendency: Constant avalanche danger** →  
 on Wednesday 30 01 2019



Wind-drifted  
 snow



Persistent  
 weak layer



### Wind slabs and weakly bonded old snow require caution.

The fresh wind slabs can be released easily in all aspects. The avalanche prone locations are to be found in particular in gullies and bowls, and behind abrupt changes in the terrain. The wind slabs are clearly recognisable to the trained eye. <br/> Avalanches can also be released in the old snowpack and reach medium size in particular on steep shady slopes. In particular transitions from a shallow to a deep snowpack are critical. Mostly small natural avalanches are possible in particular on rocky sunny slopes. Especially in the regions with a lot of snow the avalanches can still reach dangerously large size.

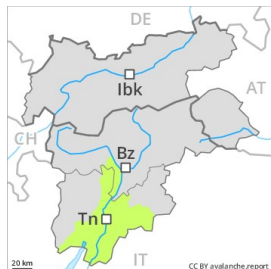
### Snowpack

As a consequence of fresh snow and a strong northerly wind, rather small wind slabs formed on Monday in all aspects. The fresh wind slabs are lying on the unfavourable surface of an old snowpack. Faceted weak layers exist in the snowpack especially on steep, rather lightly snow-covered shady slopes.

### Tendency

Moderate, level 2.

## Danger Level 1 - Low



**Tendency: Constant avalanche danger** →  
on Wednesday 30 01 2019



Wind-drifted  
snow



In all altitude zones from a snow sport perspective, in most cases insufficient snow is lying.

The fresh wind slabs represent the main danger. These are to be found especially adjacent to ridgelines and in gullies and bowls and generally at high altitudes. Mostly avalanches are small but can be released in some cases by a single winter sport participant. The avalanche prone locations are easy to recognise. Weak layers in the old snowpack can be released in some places in particular in gullies and bowls. Apart from the danger of being buried, restraint should be exercised in particular in view of the danger of avalanches sweeping people along and giving rise to falls.

### Snowpack

From a snow sport perspective, in most cases insufficient snow is lying. 5 to 15 cm of snow. fell in all altitude zones. Above approximately 2000 m a little snow is lying. The mostly small wind slabs remain prone to triggering in particular on very steep shady slopes above approximately 2200 m.

### Tendency

The avalanche danger will persist.