

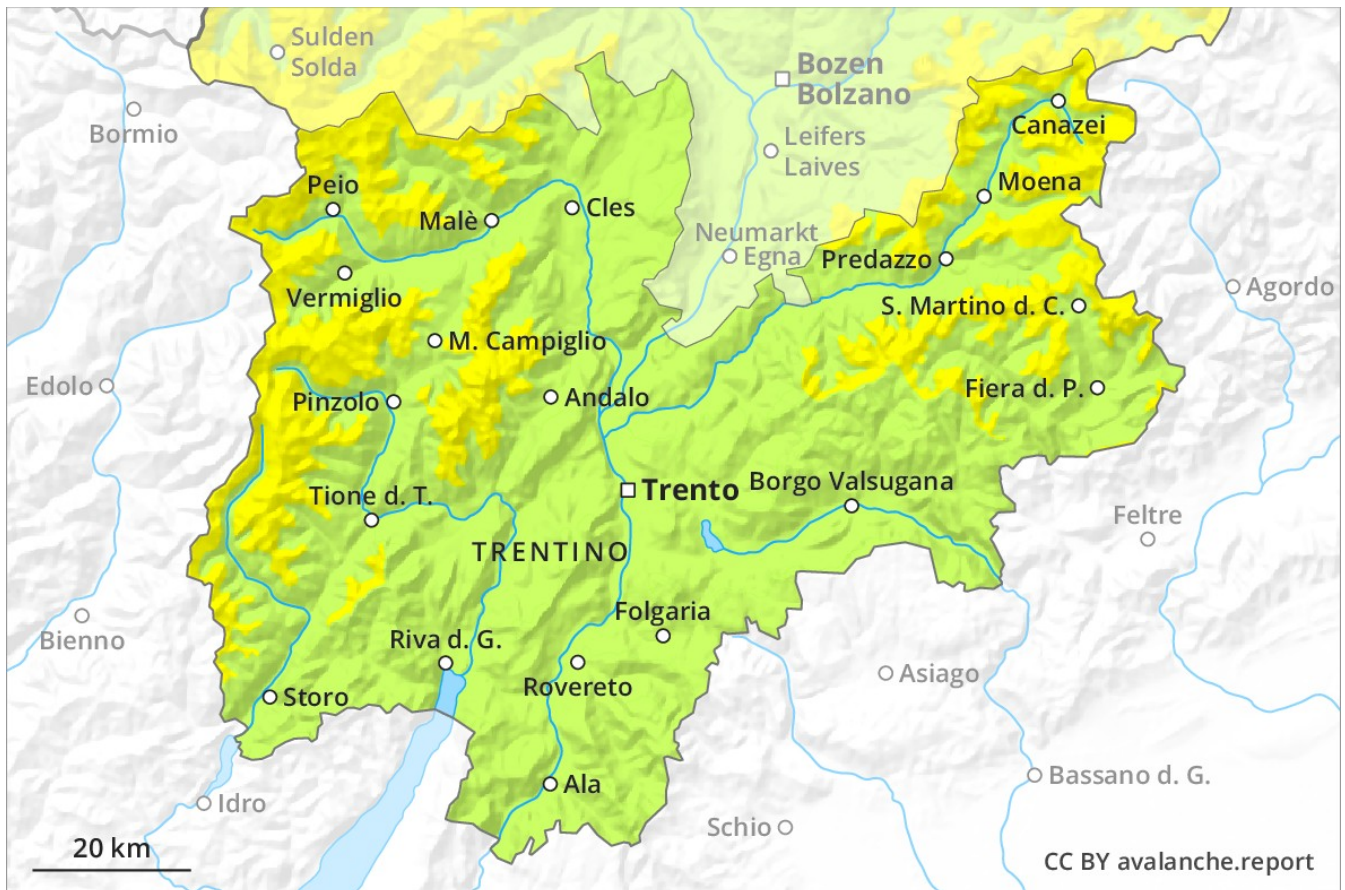
Avalanche Forecast

Thursday 31 01 2019

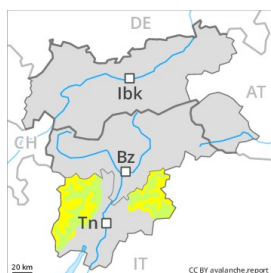
Published 30 01 2019, 17:00



Avalanche.report



Danger Level 2 - Moderate



Tendency: Increasing avalanche danger
on Friday 01 02 2019



Wind-drifted
snow



Treeline



Persistent
weak layer



Treeline

The mostly small wind slabs are to be evaluated with care and prudence in particular in very steep terrain.

Wind slabs represent the main danger. They are to be found especially above the tree line. The avalanche prone locations are to be found in particular in gullies and bowls, and behind abrupt changes in the terrain. These are clearly recognisable to the trained eye. Avalanches can also be released in the old snowpack and reach medium size in particular on steep shady slopes.

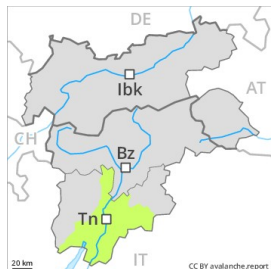
Snowpack

A little snow is lying below approximately 2000 m. The wind was moderate at times in some localities. Wind slabs have formed in all aspects.

Tendency

Increase in avalanche danger as a consequence of fresh snow and wind.

Danger Level 1 - Low



Tendency: Increasing avalanche danger
on Friday 01 02 2019



Wind-drifted
snow



2200m

In all altitude zones from a snow sport perspective, in most cases insufficient snow is lying.

The mostly small wind slabs represent the main danger. They are to be found especially adjacent to ridgelines and in gullies and bowls and generally in the high Alpine regions. These avalanche prone locations are rather rare and are easy to recognise.

Snowpack

From a snow sport perspective, in most cases insufficient snow is lying. Above approximately 2000 m a little snow is lying. The mostly small wind slabs remain prone to triggering in particular on very steep shady slopes above approximately 2200 m.

Tendency

Increase in avalanche danger as a consequence of fresh snow and wind.