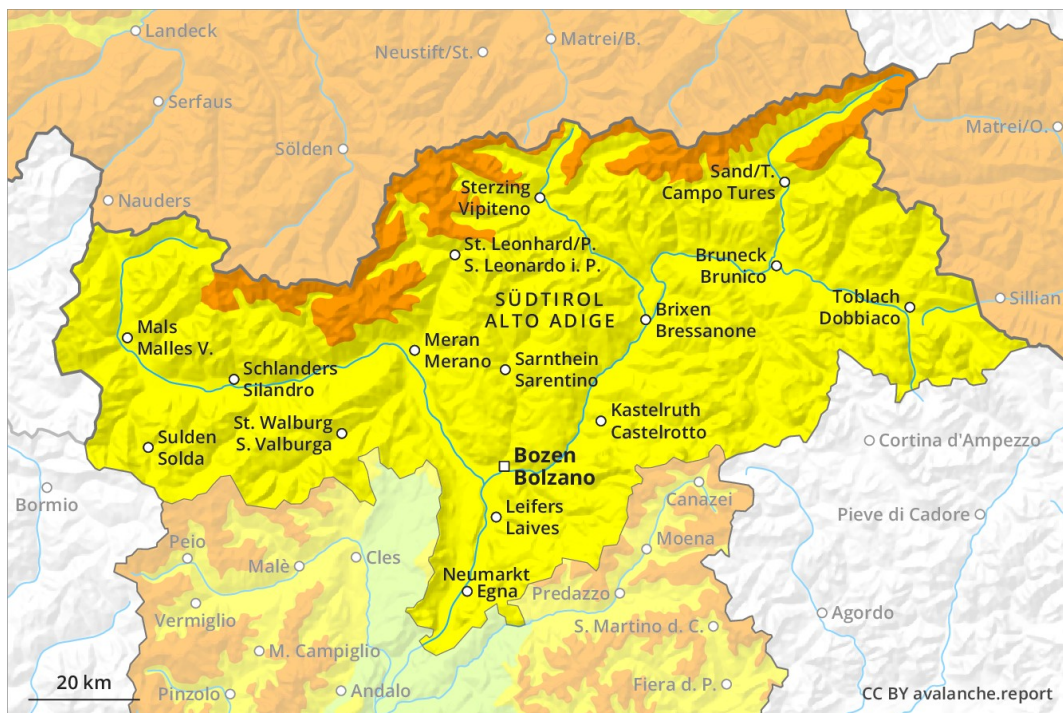
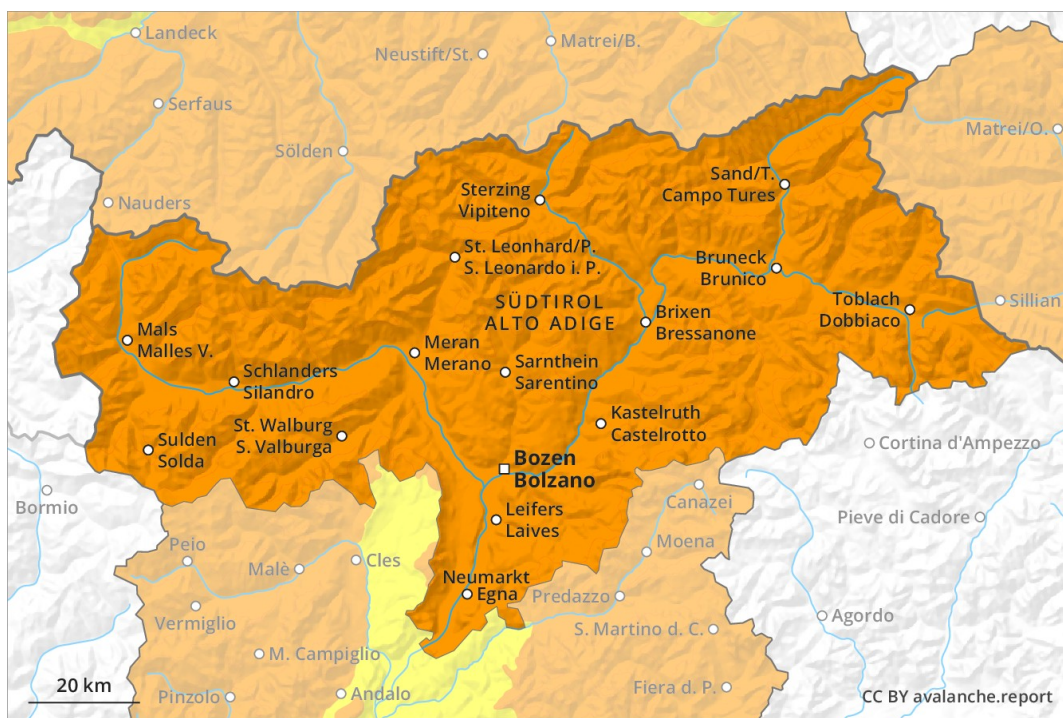


### AM



### PM



## Danger Level 3 - Considerable

AM:



**Tendency: Increasing avalanche danger**  
 on Saturday 02 02 2019



1500m



Wind-drifted snow



Treeline

PM:



**Tendency: Increasing avalanche danger**  
 on Saturday 02 02 2019



New snow



1500m



Wind-drifted snow



Treeline

Danger level 3 (considerable) will be reached as the day progresses in these regions.

Gradual increase in avalanche danger as a consequence of fresh snow and stormy weather. Medium-sized and, in isolated cases, large natural avalanches are to be expected in particular on wind-loaded slopes. Avalanches can in some cases penetrate deep layers and reach quite a large size in particular on steep shady slopes. The fresh wind slabs can be released easily. Exposed parts of transportation routes can be endangered in some localities in particular in the regions exposed to heavier precipitation. Slides are to be expected on cut slopes. The conditions are critical for ski touring, freeriding and snowshoe hiking outside marked and open pistes.

### Snowpack

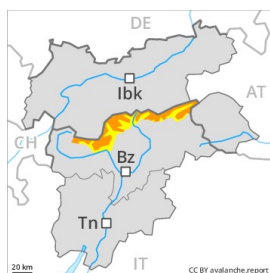
The fresh snow will be deposited on the quite favourable surface of an old snowpack in all aspects. Faceted weak layers exist in the snowpack especially on steep, rather lightly snow-covered shady slopes. As a consequence of fresh snow and a storm force southwesterly wind, sometimes large wind slabs will form as the day progresses over a wide area. The avalanche prone locations are numerous and are barely recognisable because of the poor visibility.

### Tendency

In the regions exposed to heavier precipitation probably danger level 4 (high) will be reached.

## Danger Level 3 - Considerable

AM:



Tendency: Increasing avalanche danger  
 on Saturday 02 02 2019



New snow



1500m



Wind-drifted  
 snow



Treeline

PM:



Tendency: Increasing avalanche danger  
 on Saturday 02 02 2019



New snow



1500m



Wind-drifted  
 snow



Treeline

Gradual increase in avalanche danger as the precipitation becomes more intense.

Gradual increase in avalanche danger as a consequence of fresh snow and stormy weather. Medium-sized and, in isolated cases, large natural avalanches are to be expected in particular on wind-loaded slopes. Avalanches can in some cases penetrate deep layers and reach quite a large size in particular on steep shady slopes. The fresh wind slabs can be released easily. Exposed parts of transportation routes can be endangered in some localities in particular in the regions exposed to heavier precipitation. Slides are to be expected on cut slopes. The conditions are critical for ski touring, freeriding and snowshoe hiking outside marked and open pistes.

### Snowpack

The fresh snow will be deposited on the quite favourable surface of an old snowpack in all aspects. Faceted weak layers exist in the snowpack especially on steep, rather lightly snow-covered shady slopes. As a consequence of fresh snow and a storm force southwesterly wind, sometimes large wind slabs will form as the day progresses over a wide area. The avalanche prone locations are numerous and are barely recognisable because of the poor visibility.

### Tendency

In the regions exposed to heavier precipitation probably danger level 4 (high) will be reached.