

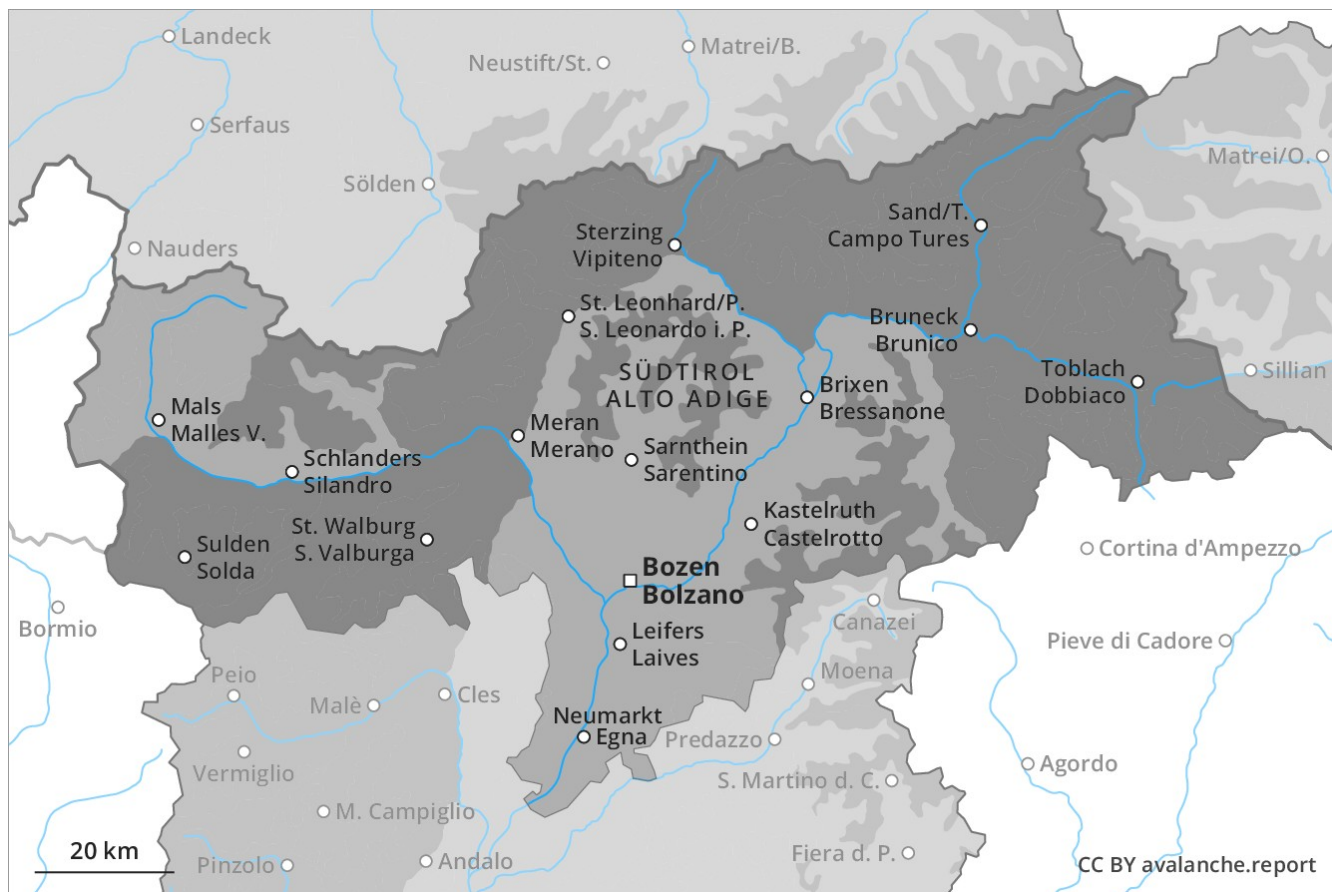
Avalanche Forecast

Monday 04 02 2019

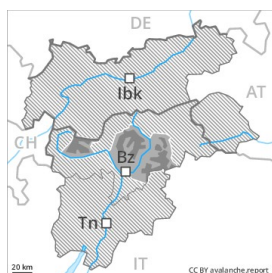
Published 03 02 2019, 17:00



Avalanche.report



Danger Level 4 - High



Tendency: Decreasing avalanche danger
on Tuesday 05 02 2019



Persistent
weak layer



Wind-drifted
snow



Natural dry avalanches are to be expected even now.

A lot of snow has fallen in the last three days over a wide area. Temporary safety measures are not to be lifted until a thorough assessment has been performed. A calming of the weather during the day can be used to assess the starting zones and the effectiveness of the protection structures. The northerly wind has transported a lot of snow. The sometimes large wind slabs are lying on soft layers in all aspects. Medium-sized and large natural avalanches are possible in particular from starting zones at higher altitudes. Avalanches can also penetrate down to the ground and reach quite a large size. As the temperature drops there will be a gradual decrease in the danger of moist and wet snow slides. The conditions are very dangerous for backcountry touring and other off-piste activities. Even single backcountry tourers or freeriders can release avalanches very easily, including large ones.

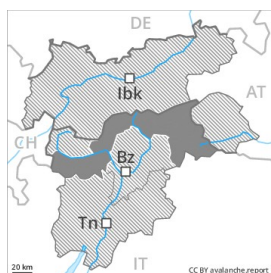
Snowpack

The fresh snow of the last three days is lying on the unfavourable surface of an old snowpack in all aspects. Fresh snow and much of the wind-drifted snow can be released naturally in all aspects. Distinct weak layers exist in the old snowpack. As a consequence of a sometimes strong northerly wind, sometimes large wind slabs formed since Sunday over a wide area. From origins in starting zones where no previous releases have taken place more slab avalanches are possible at any time, even large ones in isolated cases. The avalanche prone locations are widespread.

Tendency

On wind-loaded slopes the likelihood of avalanches being released is greater.

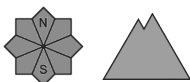
Danger Level 4 - High



Tendency: Decreasing avalanche danger
on Tuesday 05 02 2019



Wind-drifted
snow



Not yet all starting zones have released the snow.

A lot of snow has fallen in the last three days. Selective safety measures are not to be lifted until a thorough assessment has been performed. A calming of the weather during the day can be used to assess the starting zones and the effectiveness of the protection structures. The northerly wind has transported the fresh snow significantly. The fresh wind slabs can be released naturally in all aspects. Natural avalanches are possible from starting zones at higher altitudes. Avalanches can also release deeper layers of the snowpack and reach very large size in isolated cases. Up to intermediate altitudes rain has fallen in some localities. As the temperature drops there will be a decrease in the danger of moist and wet avalanches. The conditions are very dangerous for ski touring, freeriding and snowshoe hiking. Even single snow sport participants can release avalanches very easily, including large ones.

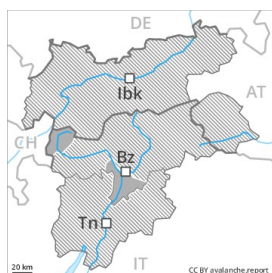
Snowpack

The fresh snow of the last three days is lying on the unfavourable surface of an old snowpack in all aspects. The fresh snow and wind slabs can be released naturally in all aspects. Distinct weak layers exist in the old snowpack. As a consequence of a sometimes strong northerly wind, deep wind slabs formed in all regions. From origins in starting zones where no previous releases have taken place more slab avalanches are possible at any time, even large ones in isolated cases. The avalanche prone locations are currently prevalent immediately adjacent to the pistes as well.

Tendency

The snowpack remains generally unstable.

Danger Level 3 - Considerable



Tendency: Constant avalanche danger →
on Tuesday 05 02 2019



Persistent
weak layer



Wind-drifted
snow



^
Treeline

The snow sport conditions outside marked and open pistes are dangerous.

Slight decrease in avalanche danger. Some medium-sized and, in isolated cases, large natural avalanches are still possible. Even single backcountry tourers or freeriders can release avalanches in many places, including large ones. Whumpung sounds and the formation of shooting cracks when stepping on the snowpack and penetration of the old snow cover are a clear indication of a weakly bonded snowpack. The fresh wind slabs can be released easily, or in isolated cases naturally.

Snowpack

The fresh snow is lying on the unfavourable surface of an old snowpack. Distinct weak layers exist in the old snowpack in all aspects. In the last two days easily released wind slabs formed especially above approximately 2000 m. The avalanche prone locations are currently prevalent immediately adjacent to the pistes as well and are difficult to recognise.

Tendency

The avalanche conditions remain critical.