

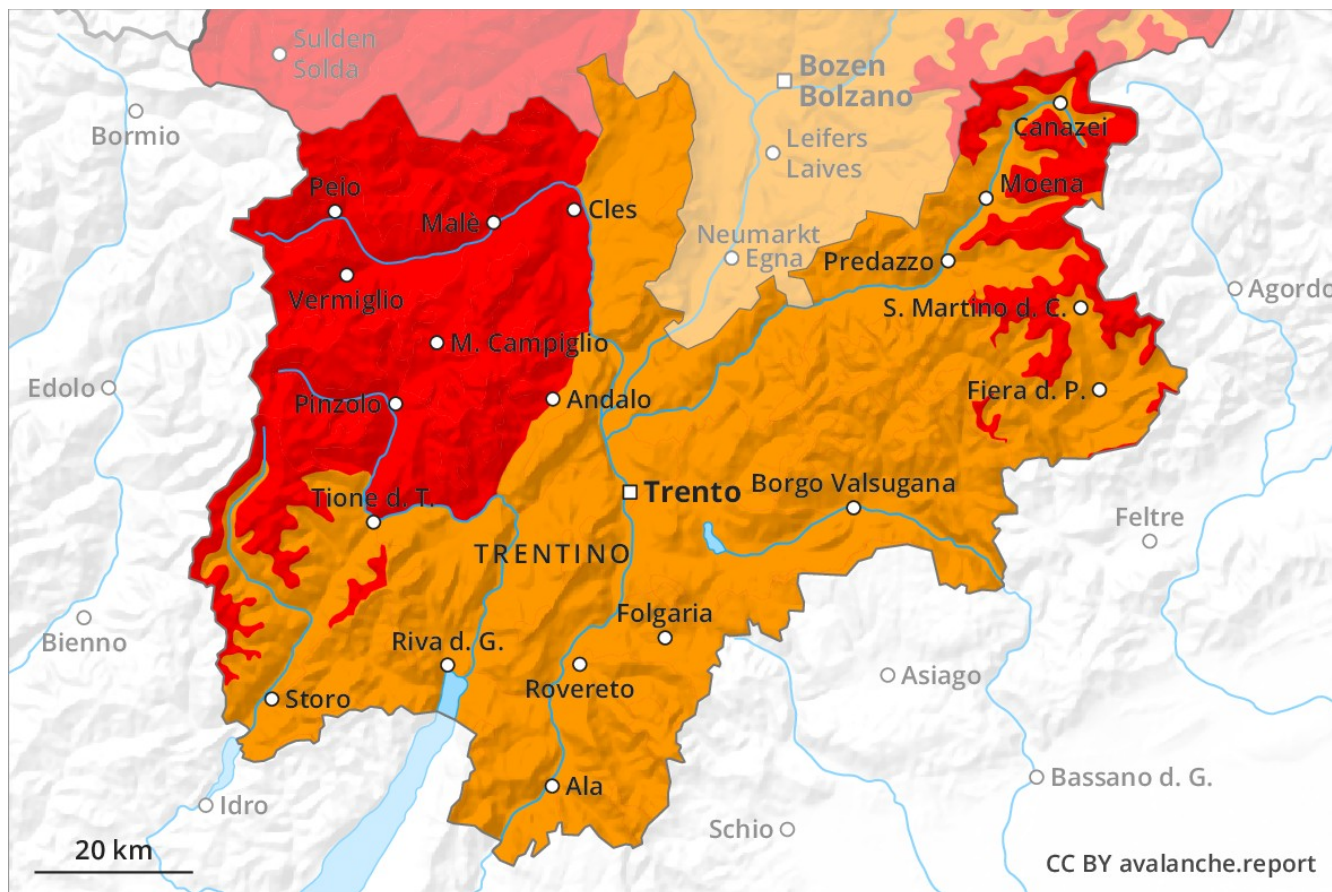
Avalanche Forecast

Monday 04 02 2019

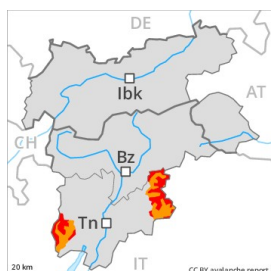
Published 03 02 2019, 17:00



Avalanche.report



Danger Level 4 - High



Tendency: Decreasing avalanche danger
on Tuesday 05 02 2019



Wind-drifted
snow



New snow



Fresh snow and wind slabs require caution. High avalanche danger will prevail. Backcountry touring calls for great caution and restraint.

As a consequence of fresh snow and wind a high avalanche danger will be encountered over a wide area. Natural avalanches are possible, even quite large ones. Avalanche prone locations are to be found in particular in gullies and bowls, and behind abrupt changes in the terrain. These are to be found especially above the tree line. Even single backcountry tourers can release avalanches easily, including large ones. The wind slabs are to be avoided in particular in steep terrain. Ski touring, freeriding and snowshoe hiking are to be restricted to moderately steep terrain.

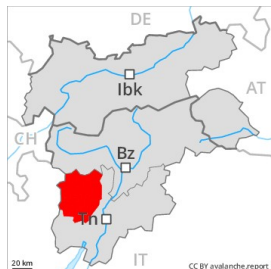
Snowpack

The snowpack will be unstable over a wide area. The wind was strong at times in some localities. Much of the fresh and wind-drifted snow represent the main danger. In many cases fresh snow is lying on an icy crust. It is poorly bonded in all aspects and in all altitude zones. Faceted weak layers exist in the snowpack in particular at elevated altitudes.

Tendency

The avalanche danger will decrease gradually.

Danger Level 4 - High



Tendency: Decreasing avalanche danger
on Tuesday 05 02 2019



Wind-drifted
snow



New snow



Fresh snow and wind slabs require caution. High avalanche danger will prevail. Backcountry touring calls for great caution and restraint.

As a consequence of fresh snow and wind a high avalanche danger will be encountered over a wide area. Natural avalanches are possible, even quite large ones. Avalanche prone locations are to be found in particular in gullies and bowls, and behind abrupt changes in the terrain. These are to be found especially above the tree line. Even single backcountry tourers can release avalanches easily, including large ones. The wind slabs are to be avoided in particular in steep terrain. Ski touring, freeriding and snowshoe hiking are to be restricted to moderately steep terrain.

Snowpack

The snowpack will be unstable over a wide area. The wind was strong at times in some localities. Much of the fresh and wind-drifted snow represent the main danger. In many cases fresh snow is lying on an icy crust. It is poorly bonded in all aspects and in all altitude zones. Faceted weak layers exist in the snowpack in particular at elevated altitudes.

Tendency

The avalanche danger will decrease gradually.

Danger Level 3 - Considerable



Tendency: Decreasing avalanche danger
on Tuesday 05 02 2019



Wind-drifted
snow



New snow



Fresh snow and wind slabs require caution. Considerable avalanche danger will prevail. Backcountry touring calls for great caution and restraint.

As a consequence of fresh snow and wind a considerable avalanche danger will be encountered over a wide area. Natural avalanches are possible, even quite large ones. Avalanche prone locations are to be found in particular in gullies and bowls, and behind abrupt changes in the terrain. These are to be found especially above the tree line. Even single backcountry tourers can release avalanches easily, including large ones. The wind slabs are to be avoided in particular in steep terrain. Ski touring, freeriding and snowshoe hiking are to be restricted to moderately steep terrain.

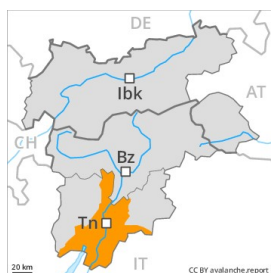
Snowpack

The snowpack will be unstable over a wide area. The wind was strong at times in some localities. Much of the fresh and wind-drifted snow represent the main danger. In many cases fresh snow is lying on an icy crust. It is poorly bonded in all aspects and in all altitude zones. Weak layers exist in the snowpack in particular at high altitudes and in high Alpine regions.

Tendency

The avalanche danger will decrease gradually.

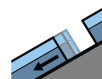
Danger Level 3 - Considerable



Tendency: Decreasing avalanche danger
on Tuesday 05 02 2019



Wind-drifted
snow



Gliding snow



Fresh snow and wind slabs require caution. Considerable avalanche danger will prevail. Backcountry touring calls for extensive experience and restraint.

As a consequence of fresh snow and wind a considerable avalanche danger will be encountered over a wide area. Natural avalanches are possible, even large ones. Avalanche prone locations are to be found in particular in gullies and bowls, and behind abrupt changes in the terrain. These are to be found especially above the tree line. Single backcountry tourers can release avalanches, including large ones. The wind slabs are to be avoided in particular in steep terrain. Backcountry touring calls for great caution and restraint.

Snowpack

The snowpack will be unstable over a wide area. The wind was strong at times in some localities. Much of the fresh and wind-drifted snow represent the main danger. In some places fresh snow is lying on an icy crust. It is poorly bonded in all aspects and above the tree line.

Tendency

The avalanche danger will decrease gradually.