

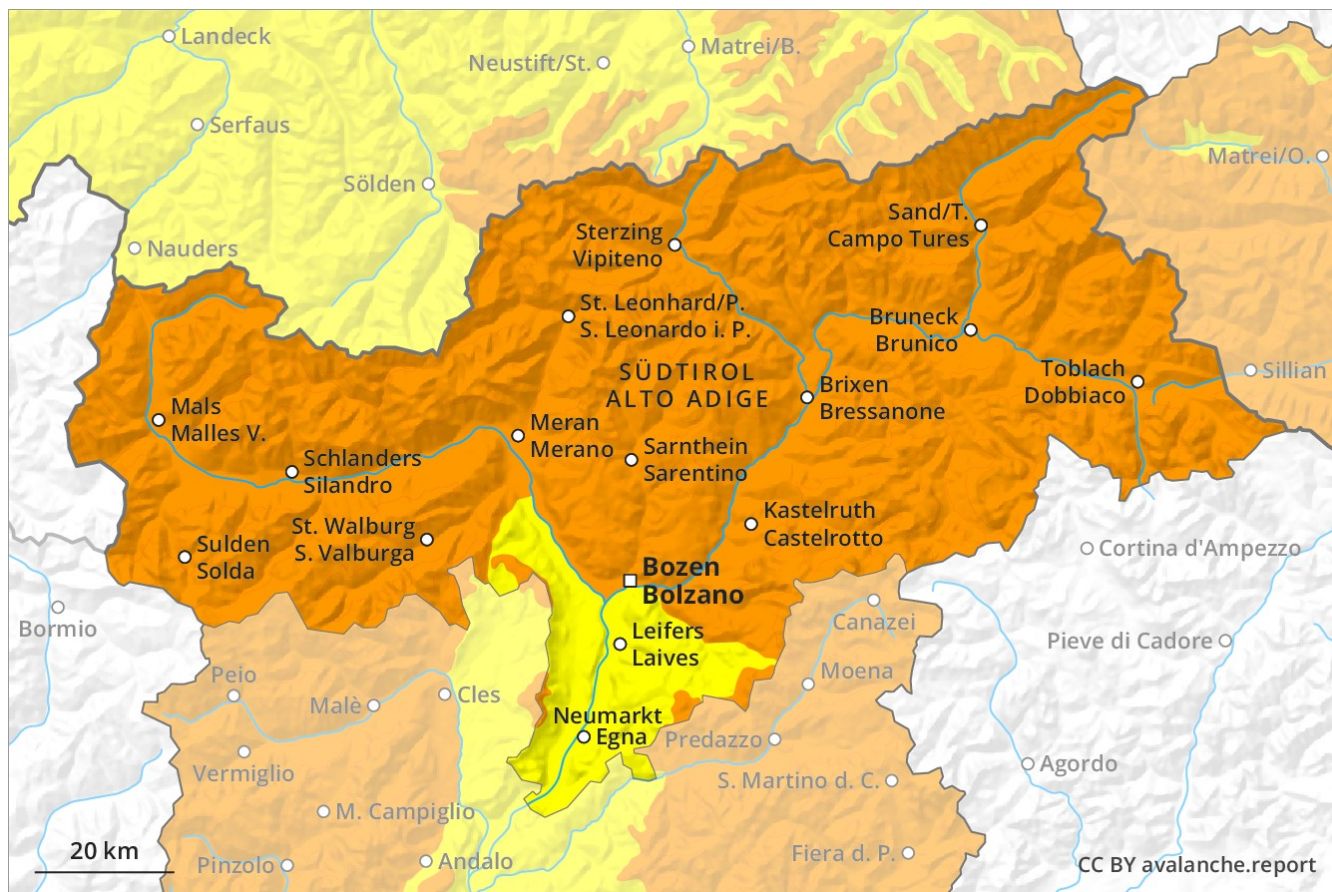
# Avalanche Forecast

## Wednesday 06 02 2019

Published 05 02 2019, 17:00



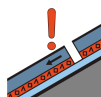
Avalanche.report



## Danger Level 3 - Considerable



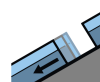
**Tendency: Decreasing avalanche danger**  
on Thursday 07 02 2019



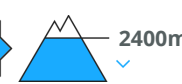
Persistent  
weak layer



2600m  
1600m



Gliding snow



2400m

Snow sport activities outside marked and open pistes call for extensive experience in the assessment of avalanche danger and caution. Wind slabs are to be avoided. Caution is to be exercised in areas with glide cracks.

As a consequence of fresh snow and a sometimes strong wind, sometimes large wind slabs formed in the last few days in all aspects. This applies in particular in areas close to the tree line as well as above the tree line. The fresh wind slabs can be released easily, even by a single winter sport participant. Also slopes adjacent to ridgelines are especially dangerous. In some cases avalanches are large. There is a danger of gliding avalanches, in particular below approximately 2400 m on steep grassy slopes. Gliding avalanches can be released at any time of day or night.

## Snowpack

### Danger patterns

dp 1: deep persistent weak layer

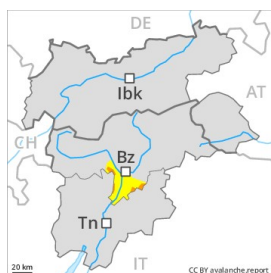
dp 2: gliding snow

The fresh snow and wind slabs of the last few days are lying on top of a weakly bonded old snowpack in all aspects, especially between approximately 1600 and 2600 m. Whumpfing sounds and the formation of shooting cracks when stepping on the snowpack are a clear indication of a weakly bonded snowpack.

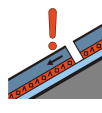
## Tendency

Further decrease in avalanche danger.

## Danger Level 3 - Considerable



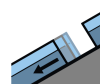
**Tendency: Decreasing avalanche danger**  
 on Thursday 07 02 2019



Persistent weak layer



2600m  
1600m



Gliding snow



2400m

Snow sport activities outside marked and open pistes call for extensive experience in the assessment of avalanche danger and caution.

As a consequence of fresh snow and a sometimes strong wind, sometimes large wind slabs formed in the last few days in all aspects. This applies in particular in areas close to the tree line as well as above the tree line. The fresh wind slabs can be released easily, even by a single winter sport participant,. Also slopes adjacent to ridgelines are especially dangerous. There is a danger of gliding avalanches, in particular below approximately 2400 m on steep grassy slopes. Gliding avalanches can be released at any time of day or night. Backcountry touring and other off-piste activities call for experience in the assessment of avalanche danger.

### Snowpack

**Danger patterns**

dp 1: deep persistent weak layer

dp 2: gliding snow

The fresh snow and wind slabs of the last few days are lying on top of a weakly bonded old snowpack in all aspects. Whumpfung sounds and the formation of shooting cracks when stepping on the snowpack are a clear indication of a weakly bonded snowpack.

### Tendency

Further decrease in avalanche danger.