

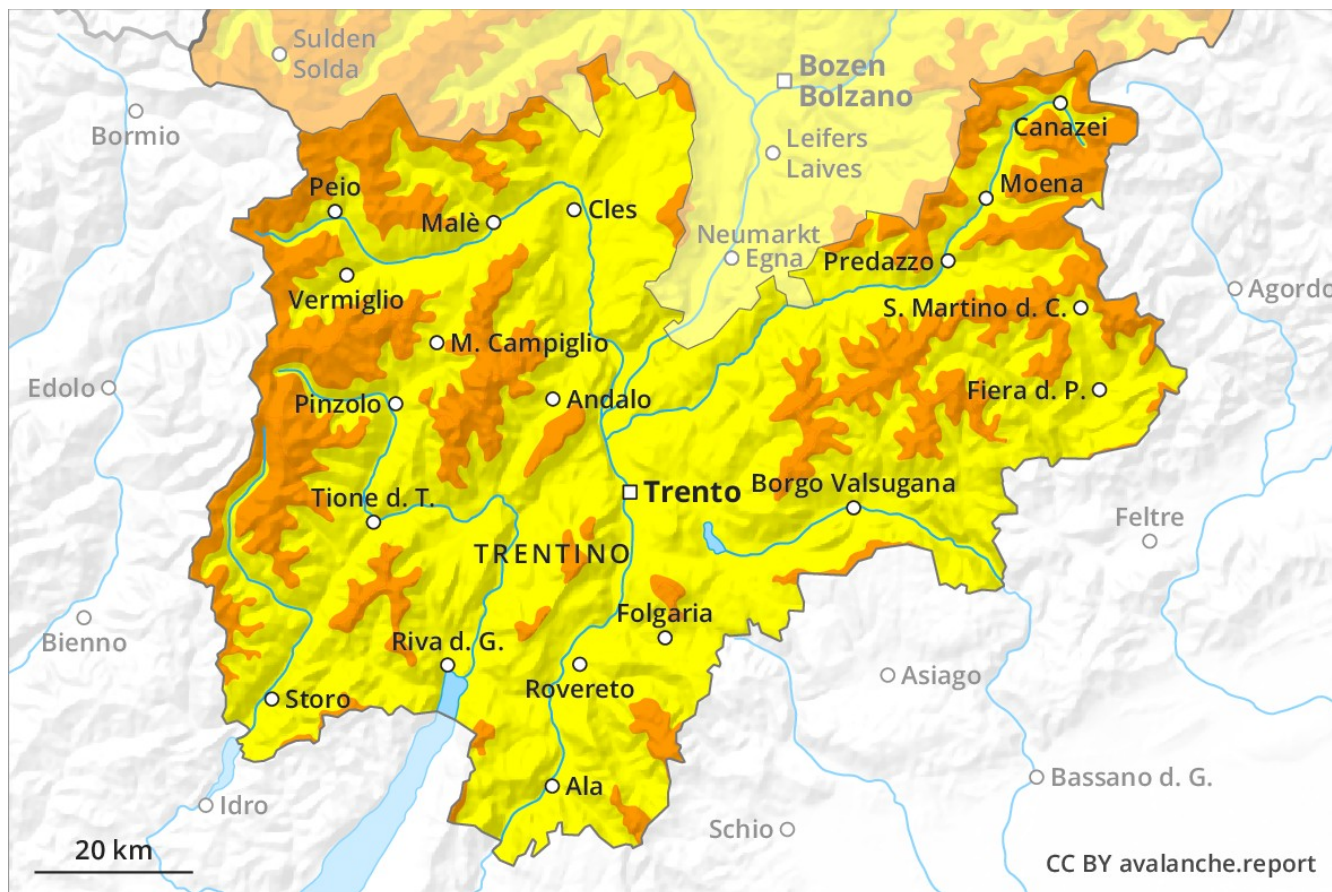
# Avalanche Forecast

## Thursday 07 02 2019

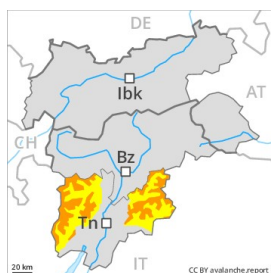
Published 06 02 2019, 17:00



Avalanche.report



## Danger Level 3 - Considerable



**Tendency: Decreasing avalanche danger**  
on Friday 08 02 2019



Wind-drifted  
snow



Treeline



Persistent  
weak layer



Considerable avalanche danger will prevail. Backcountry touring calls for experience in the assessment of avalanche danger.

More natural avalanches are possible, in particular medium-sized ones. Avalanche prone locations are to be found in particular on steep shady slopes above approximately 1500 m and in the vicinity of peaks in all altitude zones. Even single backcountry tourers can release avalanches, including large ones. The wind slabs are to be avoided in particular in steep terrain.

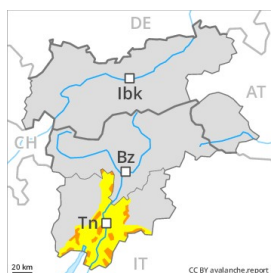
### Snowpack

The fresh snow and wind slabs of the last few days are lying on top of a weakly bonded old snowpack in all aspects. Faceted weak layers exist in the old snowpack in particular between approximately 1600 and 2600 m. Whumpfung sounds and the formation of shooting cracks when stepping on the snowpack are a clear indication of a weakly bonded snowpack.

### Tendency

The avalanche danger will decrease gradually.

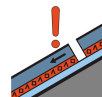
## Danger Level 3 - Considerable



**Tendency: Decreasing avalanche danger**  
on Friday 08 02 2019



Wind-drifted  
snow



Persistent  
weak layer



Considerable avalanche danger will prevail. Backcountry touring calls for extensive experience and restraint.

In the vicinity of peaks a considerable avalanche danger will persist. Dry loose snow slides are possible, even medium-sized ones. Faceted weak layers exist deeper in the snowpack in particular on steep shady slopes. These are to be found especially above the tree line. Single backcountry tourers can release avalanches, including large ones. Backcountry touring calls for experience in the assessment of avalanche danger.

### Snowpack

The fresh snow and wind slabs of the last few days are lying on top of a weakly bonded old snowpack in particular on steep shady slopes above approximately 1800 m. In some places fresh snow is lying on an icy crust. Dunes on the snow surface and whumpung sounds and the formation of shooting cracks when stepping on the snowpack can indicate the danger.

### Tendency

The avalanche danger will decrease gradually.