

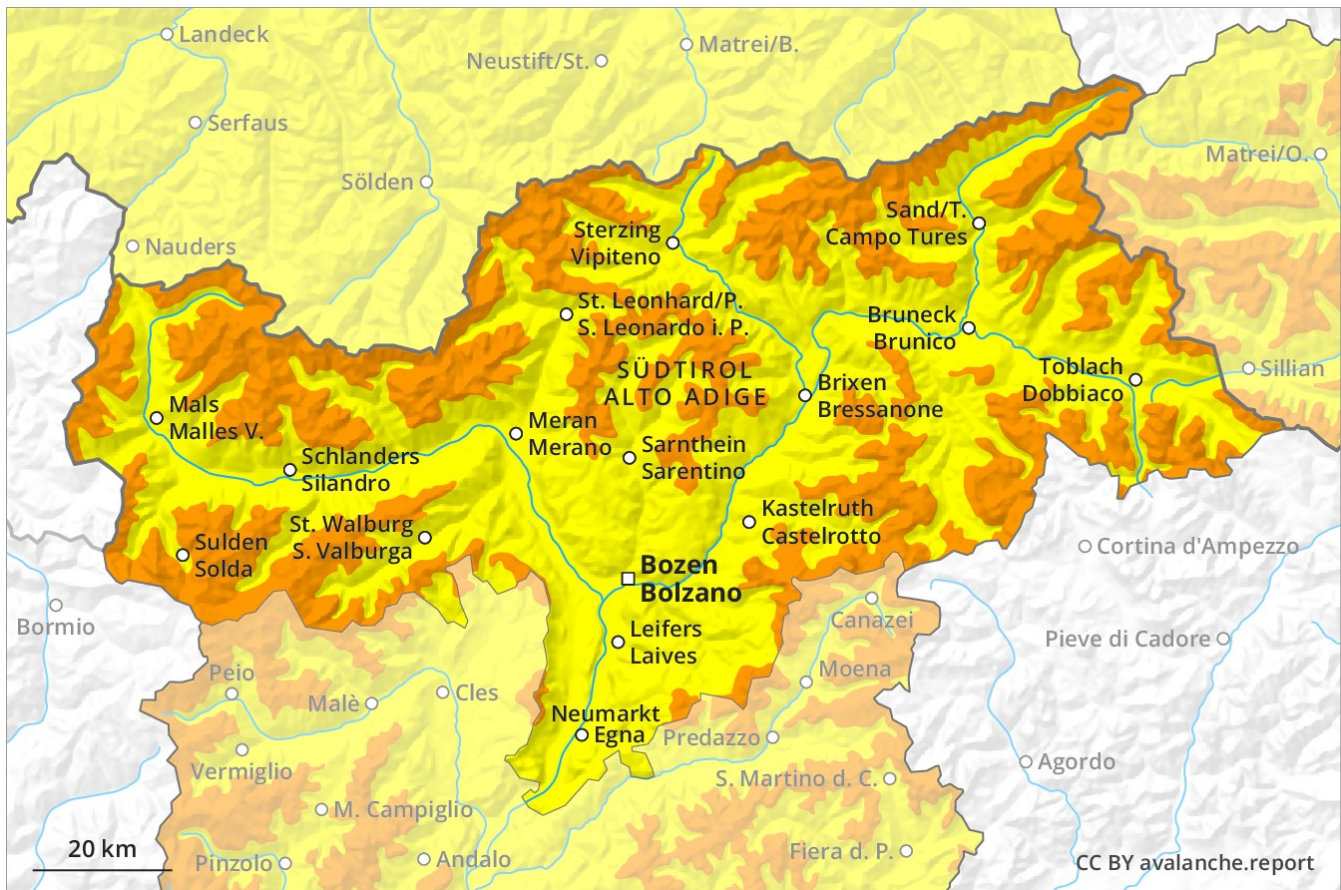
# Avalanche Forecast

## Thursday 07 02 2019

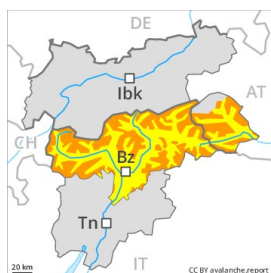
Published 06 02 2019, 17:00



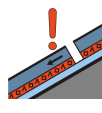
Avalanche.report



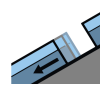
## Danger Level 3 - Considerable



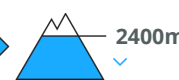
**Tendency: Constant avalanche danger** →  
on Friday 08 02 2019



Persistent weak layer



Gliding snow



Avalanches can be triggered in the old snowpack and reach large size. Caution is to be exercised in areas with glide cracks.

The fresh snow and wind slabs of last week remain prone to triggering. Dry avalanches can in many places be released by small loads. This applies in all aspects. Also slopes adjacent to ridgelines are especially dangerous. Backcountry touring and other off-piste activities call for extensive experience in the assessment of avalanche danger and careful route selection. In highly frequented off-piste terrain and on popular backcountry touring routes the avalanche situation is a little more favourable. In addition a latent danger of gliding avalanches exists, in particular below approximately 2400 m on steep grassy slopes, especially in the regions with a lot of snow. Gliding avalanches can be released at any time of day or night.

### Snowpack

#### Danger patterns

dp 1: deep persistent weak layer

dp 2: gliding snow

The fresh snow and wind slabs of last week are lying on top of a weakly bonded old snowpack in all aspects. Faceted weak layers exist in the old snowpack in particular between approximately 1600 and 2600 m. Whumpfung sounds and the formation of shooting cracks when stepping on the snowpack are a clear indication of a weakly bonded snowpack.

### Tendency

Hardly any decrease in avalanche danger.