

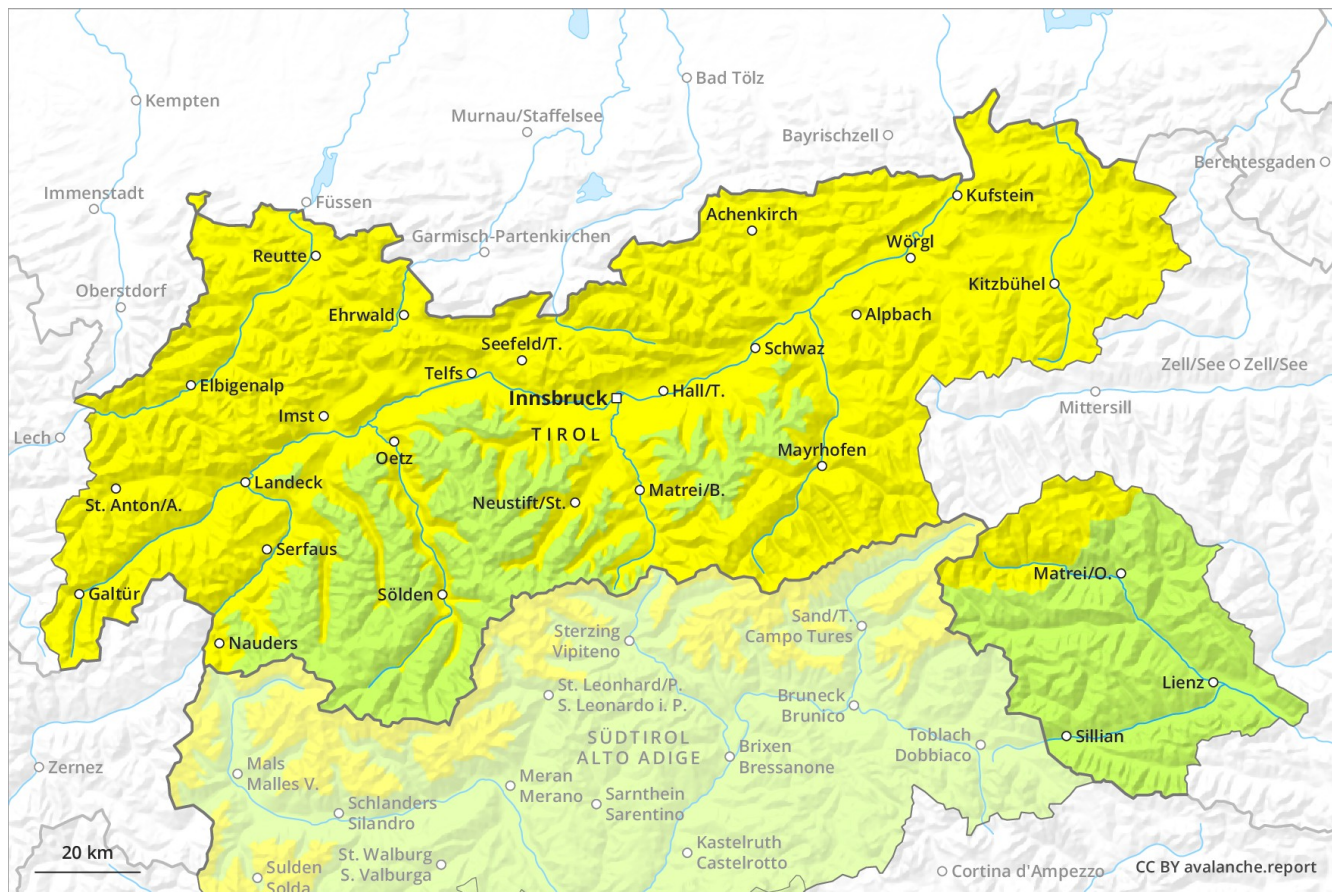
Avalanche Forecast

Saturday 02 03 2019

Published 01 03 2019, 17:00



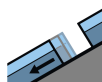
Avalanche.report



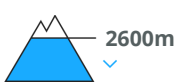
Danger Level 2 - Moderate



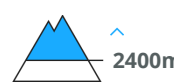
Tendency: Constant avalanche danger →
 on Sunday 03 03 2019



Gliding snow



Wind-drifted
 snow



A latent danger of gliding avalanches exists. Fresh wind slabs in particular in shady places that are protected from the wind.

There is a danger of gliding avalanches. This applies on steep grassy slopes below approximately 2600 m, especially on sunny slopes. Below approximately 2000 m avalanche prone locations are present in all aspects and the danger is slightly greater. In particular here medium-sized to large gliding avalanches are possible. Caution is to be exercised in areas with glide cracks. In addition the small wind slabs should be taken into account. The avalanche prone locations are to be found in particular on steep northwest to north to northeast facing slopes above approximately 2400 m, especially adjacent to ridgelines and in gullies and bowls and in places that are protected from the wind. Dry avalanches can in isolated cases be released, but they will be small in most cases. Such avalanche prone locations are rare and are easy to recognise. At elevated altitudes avalanche prone locations are a little more prevalent.

Snowpack

Danger patterns

dp 2: gliding snow

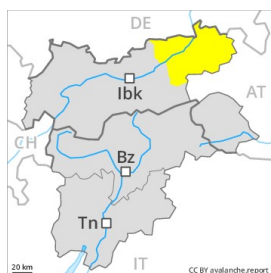
dp 6: cold, loose snow and wind

Less snow than expected has fallen. Over a wide area 5 to 10 cm of snow. has fallen since yesterday. The wind was moderate. The snowpack will be subject to considerable local variations. The mostly small wind slabs are bonding well with the old snowpack. The old snowpack will be stable over a wide area. The snowpack will be wet all the way through at low altitude.

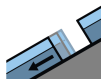
Tendency

Slight increase in danger of wet snow slides as a consequence of warming.

Danger Level 2 - Moderate



Tendency: Constant avalanche danger →
 on Sunday 03 03 2019



Gliding snow



Wind-drifted snow



2000m

A latent danger of gliding avalanches exists. Fresh wind slabs in particular in shady places that are protected from the wind.

A certain danger of gliding avalanches exists. This applies on steep grassy slopes, especially on sunny slopes. Below approximately 2000 m the avalanche prone locations are to be found in all aspects. In particular here medium-sized to large gliding avalanches are possible. Caution is to be exercised in areas with glide cracks. In addition the small wind slabs should be taken into account. The avalanche prone locations are to be found in particular on steep northwest to north to northeast facing slopes, especially adjacent to ridgelines and in gullies and bowls and in places that are protected from the wind. Dry avalanches can in isolated cases be released, but they will be small in most cases. Such avalanche prone locations are rare and are easy to recognise.

Snowpack

Danger patterns

dp 2: gliding snow

dp 6: cold, loose snow and wind

Less snow than expected has fallen. 5 to 10 cm of snow, and even more in some localities, has fallen since yesterday. The wind was moderate. The snowpack will be subject to considerable local variations. The small wind slabs are bonding well with the old snowpack. The old snowpack will be stable over a wide area. The snowpack will be wet all the way through at low altitude.

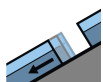
Tendency

Slight increase in danger of wet snow slides as a consequence of warming.

Danger Level 2 - Moderate



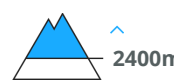
Tendency: Constant avalanche danger →
 on Sunday 03 03 2019



Gliding snow



Wind-drifted snow



There is a danger of gliding avalanches. Fresh wind slabs in particular in shady places that are protected from the wind.

There is a danger of gliding avalanches. This applies on steep grassy slopes below approximately 2600 m, especially on sunny slopes. Below approximately 2000 m avalanche prone locations are present in all aspects and the danger is slightly greater. In particular here medium-sized to large gliding avalanches are possible. Caution is to be exercised in areas with glide cracks. As a consequence of fresh snow and a moderate wind from northwesterly directions, mostly small wind slabs formed since Friday, 1 March especially adjacent to ridgelines and in gullies and bowls. The fresh wind slabs can be released in isolated cases in particular on very steep northwest, north and northeast facing slopes, especially in places that are protected from the wind above approximately 2400 m. The avalanche prone locations are rather rare and are easy to recognise. At elevated altitudes the avalanche prone locations will become more prevalent.

Snowpack

Danger patterns

dp 2: gliding snow

dp 6: cold, loose snow and wind

Less snow than expected has fallen. 10 to 15 cm of snow has fallen since yesterday, especially along the border with Vorarlberg. The wind was moderate. The snowpack will be subject to considerable local variations. The fresh snow and wind slabs are bonding quite well with the old snowpack. The old snowpack will be stable over a wide area. The snowpack will be wet all the way through at low altitude.

Tendency

Slight increase in danger of wet snow slides as a consequence of warming.

Danger Level 1 - Low



Tendency: Constant avalanche danger →
on Sunday 03 03 2019

The avalanche conditions are generally favourable.

Dry avalanches can in isolated cases be released in the old snowpack by large loads. This applies especially on very steep shady slopes between approximately 2000 and 2600 m in areas where the snow cover is rather shallow. The avalanche prone locations are very rare but are barely recognisable, even to the trained eye. Mostly avalanches are medium-sized.

Snowpack

Danger patterns

dp 1: deep persistent weak layer

The weather will be mostly sunny. The wind will be light over a wide area. The snowpack will be quite favourable. The snowpack will be subject to considerable local variations. Isolated avalanche prone weak layers exist in the bottom section of the snowpack, in particular on shady slopes between approximately 2000 and 2600 m.

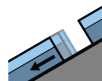
Tendency

A generally favourable avalanche situation will persist.

Danger Level 1 - Low



Tendency: Constant avalanche danger →
on Sunday 03 03 2019



Gliding snow



A favourable avalanche situation will be encountered over a wide area. Gliding avalanches are possible in isolated cases.

An appreciable danger of gliding avalanches exists. This applies on steep grassy slopes below approximately 2400 m, especially on sunny slopes. In regions with a lot of snow avalanche prone locations are more widespread and the danger is slightly greater. Areas with glide cracks are to be avoided as far as possible. Weakly bonded old snow: Dry avalanches can in very isolated cases be released in the old snowpack by large loads, especially in little used backcountry terrain. Caution is to be exercised in particular on very steep shady slopes between approximately 2000 and 2600 m in areas where the snow cover is rather shallow. The avalanche prone locations are very rare but are barely recognisable, even to the trained eye.

Snowpack

Danger patterns

dp 2: gliding snow

dp 1: deep persistent weak layer

The weather will be mostly sunny. The wind will be light to moderate. The snowpack will be quite favourable. The snowpack will be subject to considerable local variations. Isolated avalanche prone weak layers exist in the bottom section of the snowpack, in particular on steep shady slopes between approximately 2000 and 2600 m.

Tendency

A generally favourable avalanche situation will persist. Caution is to be exercised in areas with glide cracks.