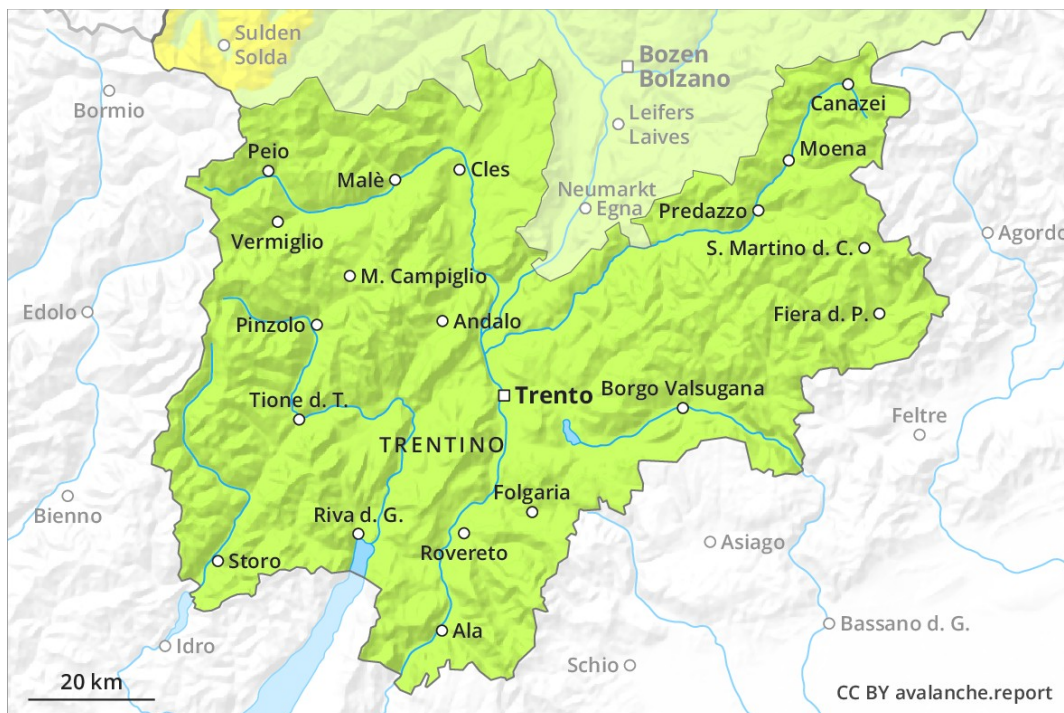
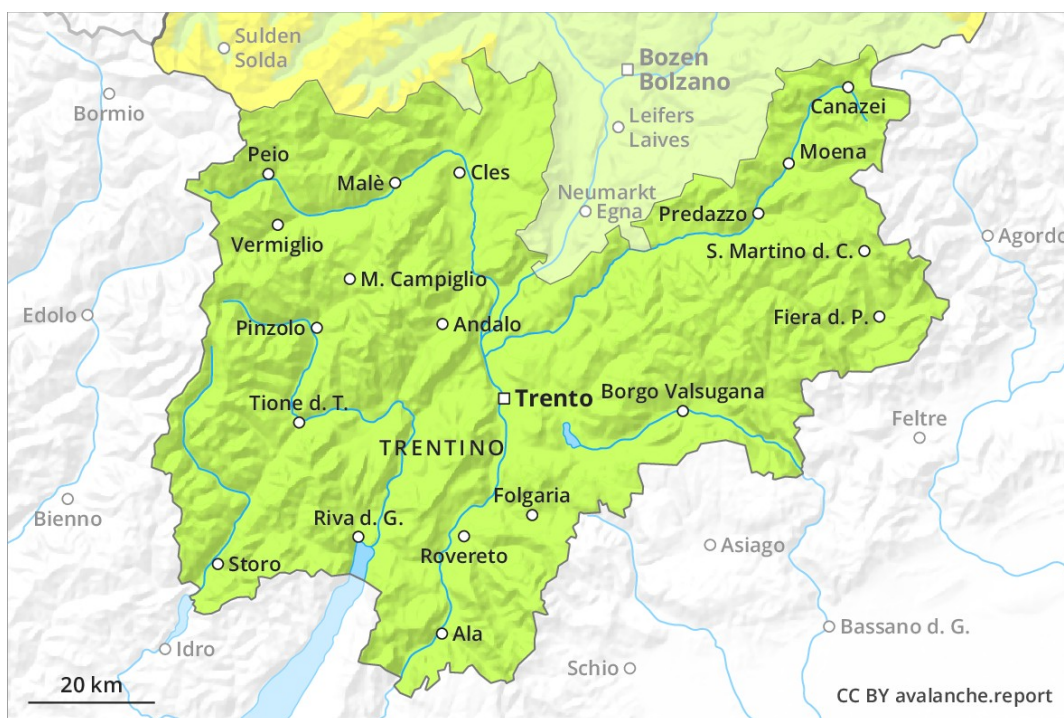




### AM



### PM



## Danger Level 1 - Low

AM:



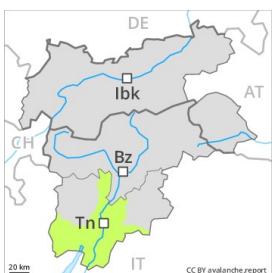
**Tendency: Constant avalanche danger** →  
 on Tuesday 05 03 2019



Persistent weak layer



PM:



**Tendency: Constant avalanche danger** →  
 on Tuesday 05 03 2019



Wind-drifted snow



Persistent weak layer



Low, level 1. A little fresh snow to intermediate altitudes.

Faceted weak layers exist in the bottom section of the old snowpack especially on steep west, north and east facing slopes. The avalanche prone locations are to be found in particular at transitions from a shallow to a deep snowpack and in gullies and bowls, and behind abrupt changes in the terrain. The early morning will see quite favourable conditions generally, but the avalanche danger will increase later. Some snow will fall over a wide area.

### Snowpack

Some snow will fall over a wide area. The snowpack will become in most cases well bonded. Old wind slabs are lying on weak layers in particular on steep shady slopes above approximately 2000 m. They will be covered with fresh snow in some cases and therefore difficult to recognise.

### Tendency

As a consequence of warming during the day and the solar radiation, the likelihood of moist loose snow avalanches being released will increase a little in particular on steep south and southeast facing slopes above the tree line.

## Danger Level 1 - Low

AM:



**Tendency: Constant avalanche danger** →  
 on Tuesday 05 03 2019



Persistent weak layer



PM:



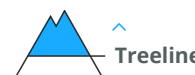
**Tendency: Constant avalanche danger** →  
 on Tuesday 05 03 2019



Wind-drifted snow



Persistent weak layer



Weak layers in the lower part of the snowpack necessitate caution and restraint. A little fresh snow to intermediate altitudes.

Faceted weak layers exist in the bottom section of the old snowpack especially on steep west, north and east facing slopes. The avalanche prone locations are to be found in particular at transitions from a shallow to a deep snowpack and in gullies and bowls, and behind abrupt changes in the terrain. The early morning will see quite favourable conditions generally, but the avalanche danger will increase later. Some snow will fall over a wide area.

### Snowpack

Some snow will fall over a wide area. The snowpack will become in most cases well bonded. Old wind slabs are lying on weak layers in particular on steep shady slopes above approximately 2000 m. They will be covered with fresh snow in some cases and therefore difficult to recognise.

### Tendency

As a consequence of warming during the day and the solar radiation, the likelihood of moist loose snow avalanches being released will increase a little in particular on steep south and southeast facing slopes above the tree line.