

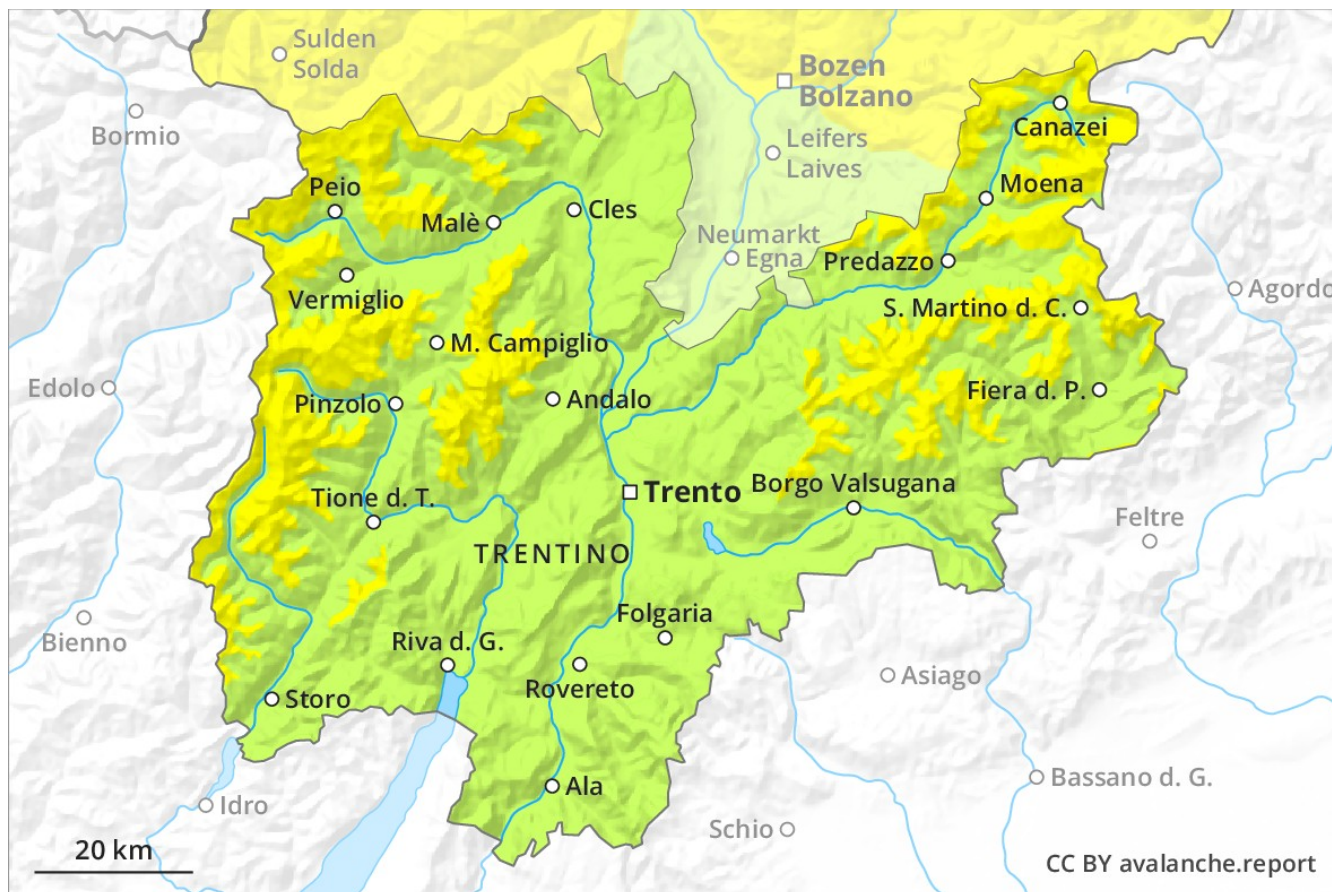
Avalanche Forecast

Tuesday 05 03 2019

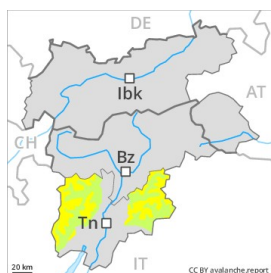
Published 04 03 2019, 17:00



Avalanche.report



Danger Level 2 - Moderate



Tendency: Constant avalanche danger →
on Wednesday 06 03 2019



Wind-drifted
snow



Treeline



Gliding snow



2500m

Fresh snow and wind slabs in particular adjacent to ridgelines and in gullies and bowls.

The mostly small wind slabs of the last few days represent the main danger. These can in some places be released by small loads. This applies especially on very steep shady slopes adjacent to ridgelines and in pass areas. These avalanche prone locations are clearly recognisable to the trained eye. Individual small and medium-sized natural avalanches are possible. As a consequence of warming during the day and the solar radiation, the likelihood of moist loose snow avalanches being released will increase gradually in particular on steep slopes below approximately 2000 m.

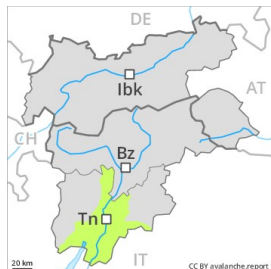
Snowpack

5 to 10 cm of snow, and even more in some localities, will fall above approximately 1500 m. During the night the wind will be moderate to strong at times. In particular adjacent to ridgelines and in gullies and bowls as well as in high Alpine regions wind slabs will form. Faceted weak layers exist deeper in the old snowpack especially in shady places that are protected from the wind.

Tendency

The danger of moist avalanches will increase a little during the day.

Danger Level 1 - Low



Treeline

Tendency: Constant avalanche danger →

on Wednesday 06 03 2019



Wind-drifted
snow



Treeline

Fresh wind slabs require caution.

The mostly small wind slabs represent the main danger. These are mostly shallow but can be released easily especially at their margins. The avalanche prone locations are to be found in particular on northwest to north to southeast facing aspects above the tree line. As a consequence of the solar radiation, the likelihood of moist and wet avalanches being released will increase a little on steep south and west facing slopes at intermediate altitudes.

Snowpack

5 cm of snow, and up to 10 cm in some localities, will fall during the night above approximately 1500 m. The wind will be moderate to strong at times. In particular adjacent to ridgelines and in gullies and bowls mostly small wind slabs will form. The old snowpack will be generally subject to considerable local variations. On south facing slopes thus far only a little snow is lying in all altitude zones.

Tendency

In all aspects a mostly favourable avalanche situation will prevail. The danger of moist avalanches will increase a little during the day.