

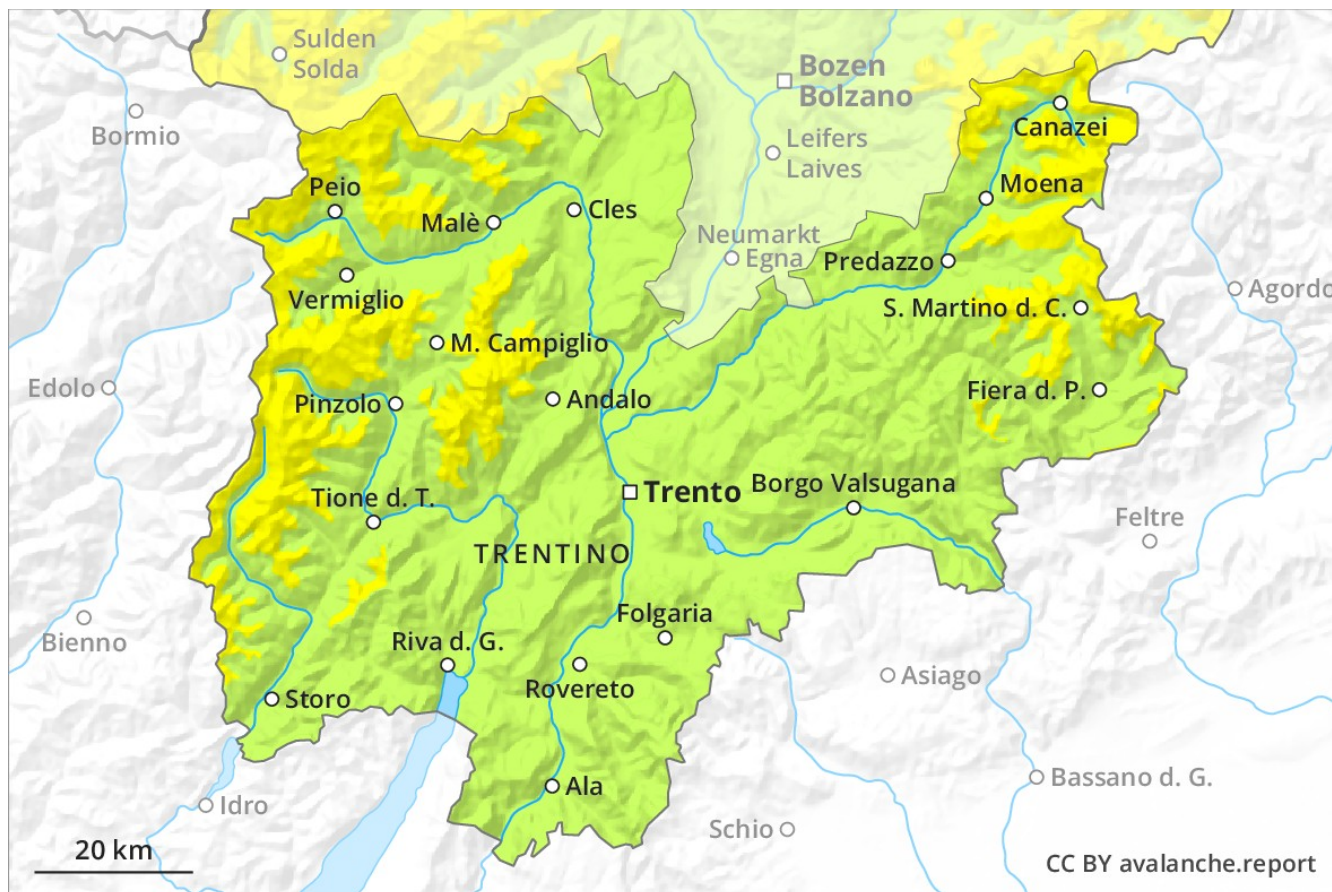
Avalanche Forecast

Wednesday 06 03 2019

Published 05 03 2019, 17:00



Avalanche.report



Danger Level 2 - Moderate



Tendency: Constant avalanche danger →
on Thursday 07 03 2019



Wind-drifted
snow



Persistent
weak layer



Fresh wind slabs especially adjacent to ridgelines and in gullies and bowls.

The clearly visible wind slabs of the last few days represent the main danger. These can in isolated cases be released by small loads, but they will be small in most cases. This applies especially on very steep shady slopes adjacent to ridgelines and in pass areas. These avalanche prone locations are clearly recognisable to the trained eye. Individual small and medium-sized natural avalanches are possible as before. As a consequence of warming during the day, the likelihood of moist loose snow avalanches being released will increase gradually in particular on steep slopes below approximately 2200 m.

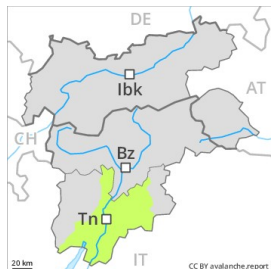
Snowpack

From the afternoon the wind will be moderate to strong at times. In particular adjacent to ridgelines and in gullies and bowls further wind slabs will form. The surface of the snowpack will freeze to form a strong crust and will soften during the day. Faceted weak layers exist in the bottom section of the snowpack in particular in shady places that are protected from the wind.

Tendency

The danger of moist loose snow slides will increase a little during the day.

Danger Level 1 - Low



Tendency: Constant avalanche danger →
on Thursday 07 03 2019



Wind-drifted
snow



Treeline



Gliding snow



2200m

Wind slabs and weakly bonded old snow require caution.

The rather small wind slabs represent the main danger. These are in many cases shallow but can only be released by large loads in most cases. The avalanche prone locations are to be found in particular on northwest to north to southeast facing aspects above the tree line. As a consequence of warming during the day, the likelihood of moist snow slides being released will increase a little in all aspects at low and intermediate altitudes.

Snowpack

From the afternoon the wind will be moderate to strong at times. In particular adjacent to ridgelines and in gullies and bowls mostly small wind slabs will form. On south facing slopes thus far only a little snow is lying in all altitude zones. The old snowpack will be generally well bonded.

Tendency

In all aspects a mostly favourable avalanche situation will prevail. The danger of moist avalanches will increase a little during the day.