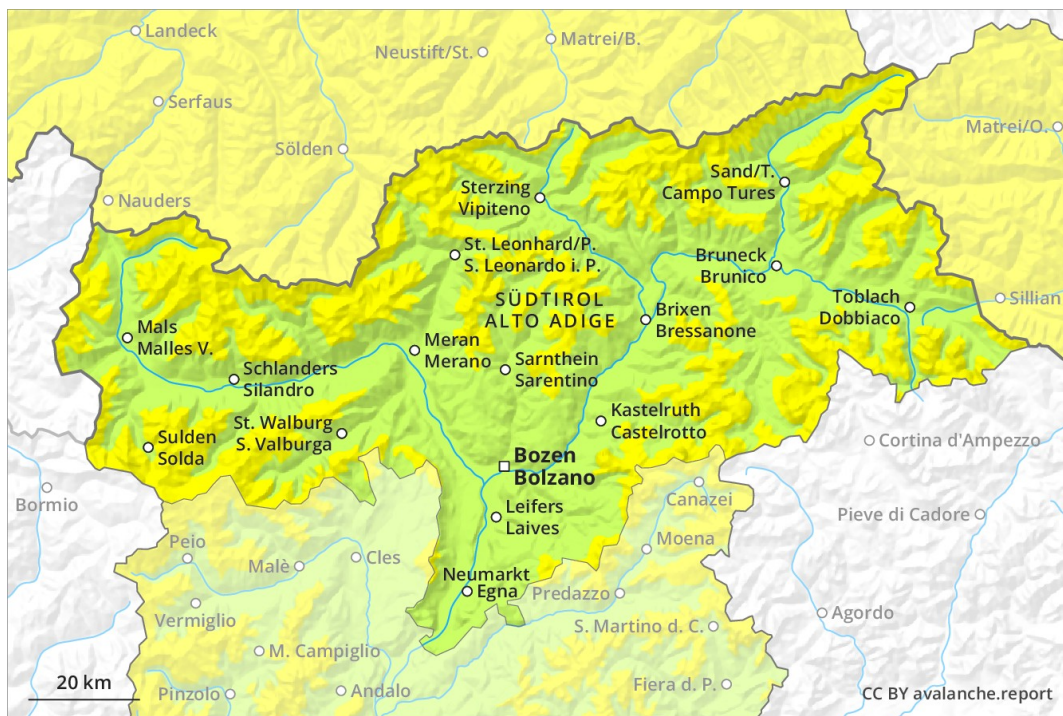
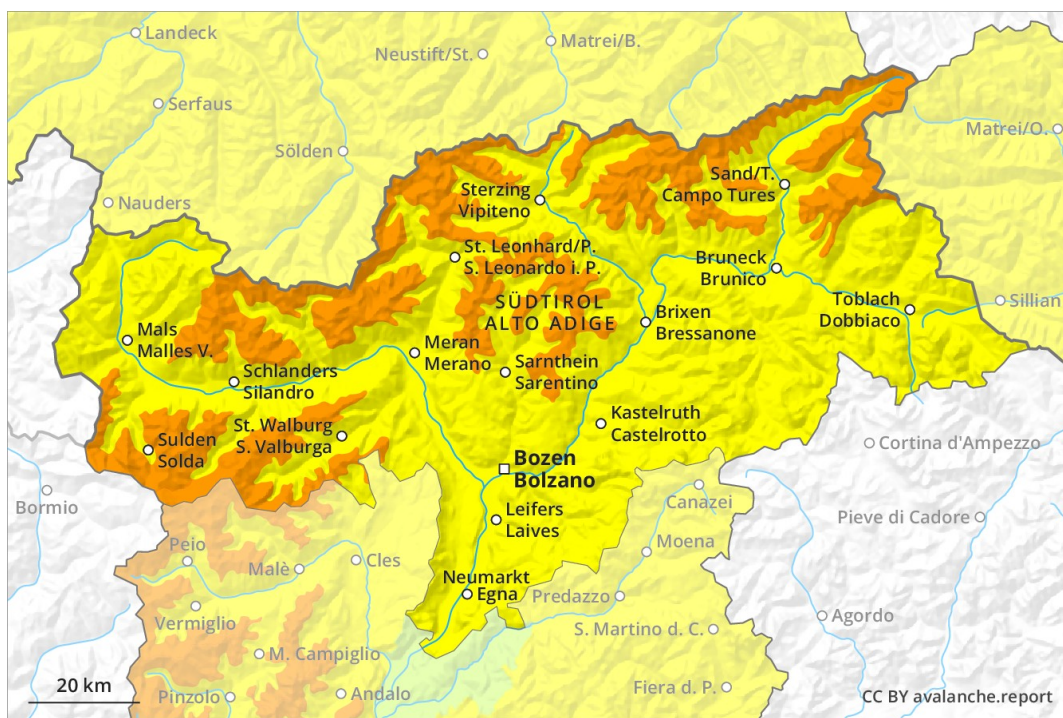


AM

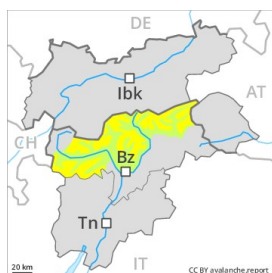


PM



Danger Level 3 - Considerable

AM:



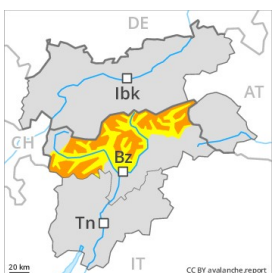
Tendency: Constant avalanche danger
 on Friday 08 03 2019 →



Wind-drifted
 snow



PM:



Tendency: Constant avalanche danger
 on Friday 08 03 2019 →



Wind-drifted
 snow



As the day progresses danger level 3 (considerable) will be reached in the regions exposed to heavier precipitation above approximately 1800 m.

The fresh wind slabs can over a wide area be released by a single winter sport participant. These avalanche prone locations are widespread. Some small and medium-sized natural avalanches are possible. Dry avalanches can in isolated cases be released in the old snowpack by large loads. This applies especially at transitions from a shallow to a deep snowpack especially above approximately 2000 m. The avalanche prone locations are rather rare but are difficult to recognise. Mostly avalanches are medium-sized.

Snowpack

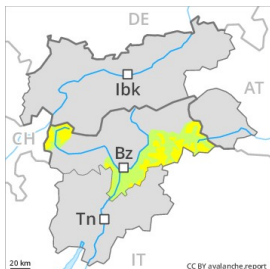
Over a wide area stormy weather and fresh snow above approximately 1500 m. In particular adjacent to ridgelines and in gullies and bowls as well as in high Alpine regions easily released wind slabs will form. Faceted weak layers exist deeper in the old snowpack especially in shady places that are protected from the wind.

Tendency

Slight decrease in avalanche danger.

Danger Level 2 - Moderate

AM:



Treeline

Tendency: Constant avalanche danger
on Friday 08 03 2019 →

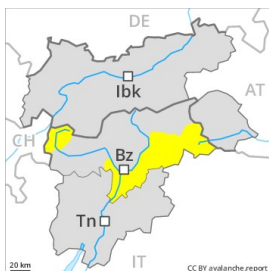


Wind-drifted
snow



Treeline

PM:



Treeline

Tendency: Constant avalanche danger
on Friday 08 03 2019 →



Wind-drifted
snow



Treeline

Fresh snow and wind slabs in particular adjacent to ridgelines and in gullies and bowls.

As a consequence of the fresh snow dry loose snow avalanches are possible as the day progresses, but they will be mostly small. In addition the wind slabs are easily triggered. This applies especially on steep slopes adjacent to ridgelines and in pass areas. These avalanche prone locations are clearly recognisable to the trained eye.

Snowpack

5 to 10 cm of snow, and even more in some localities, will fall above approximately 1500 m. The wind will be storm force. In particular adjacent to ridgelines and in gullies and bowls as well as in high Alpine regions wind slabs will form. Faceted weak layers exist deeper in the old snowpack especially in shady places that are protected from the wind.

Tendency

The avalanche danger will persist.