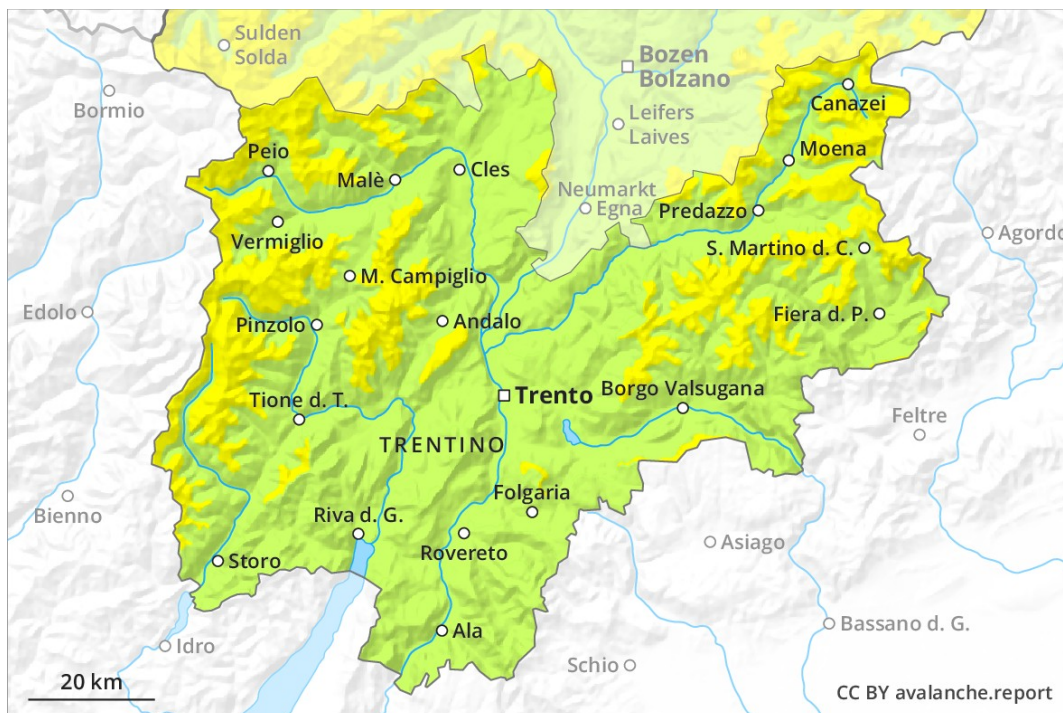
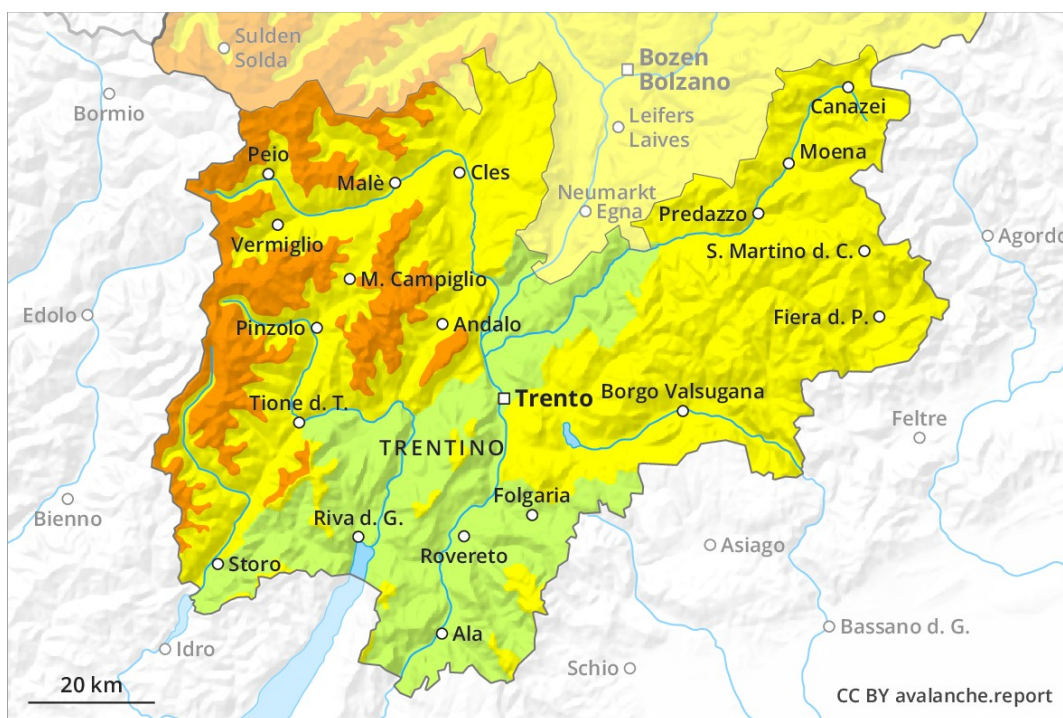


AM

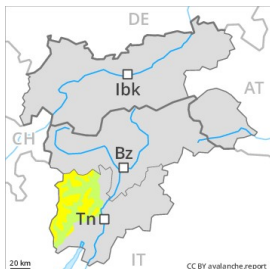


PM



Danger Level 3 - Considerable

AM:



Treeline

Tendency: Constant avalanche danger →

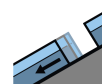
on Friday 08 03 2019



Wind-drifted snow



Treeline

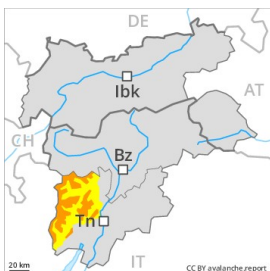


Gliding snow



2500m

PM:



Treeline

Tendency: Constant avalanche danger →

on Friday 08 03 2019



New snow



1600m



Wind-drifted snow



Treeline

Fresh snow and wind slabs in particular adjacent to ridgelines and in gullies and bowls.

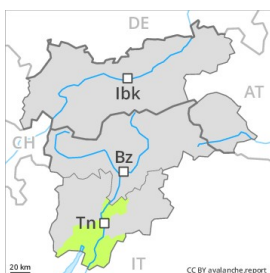
As a consequence of the fresh snow numerous loose snow avalanches are possible from the late morning, but they can reach medium size in isolated cases. The sometimes avalanche-prone wind slabs of the last few days must be evaluated with care and prudence in all aspects. These can in many cases be released by small loads or triggered naturally. This applies especially on very steep shady slopes adjacent to ridgelines and in pass areas. These avalanche prone locations are sometimes covered with fresh snow and are therefore barely recognisable because of the poor visibility.

Snowpack

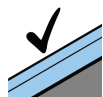
20 to 30 cm of snow, and even more in some localities, will fall from late morning above approximately 1500 m. The wind will be moderate to strong at times. In particular adjacent to ridgelines and in gullies and bowls as well as in high Alpine regions wind slabs will form. The fresh snow and wind slabs are bonding only slowly with the old snowpack in all aspects. Faceted weak layers exist deeper in the old snowpack especially in shady places that are protected from the wind.

Danger Level 2 - Moderate

AM:



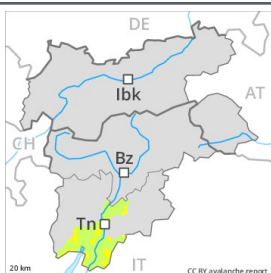
Tendency: Constant avalanche danger →
 on Friday 08 03 2019



Favourable situation



PM:



Tendency: Constant avalanche danger →
 on Friday 08 03 2019



New snow



Fresh snow and wind slabs above approximately 1800 m.

The mostly small wind slabs must be evaluated with care and prudence in all aspects. These are mostly shallow but can be released easily especially at their margins. The avalanche prone locations are to be found in particular on northwest to north to southeast facing aspects above the tree line. As the rain becomes heavier, the likelihood of wet loose snow avalanches being released will increase gradually in all aspects at low and intermediate altitudes.

Snowpack

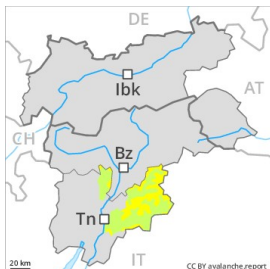
5 cm of snow, and up to 10 cm in some localities, will fall from early morning above approximately 1800 m. Up to 2000 m and above rain will fall in some localities. The wind will be moderate to strong at times. In particular adjacent to ridgelines and in gullies and bowls mostly small wind slabs will form. The old snowpack will be generally subject to considerable local variations. On south facing slopes thus far only a little snow is lying in all altitude zones.

Tendency

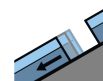
In all aspects a mostly favourable avalanche situation will prevail. The danger of moist avalanches will increase a little during the day.

Danger Level 2 - Moderate

AM:



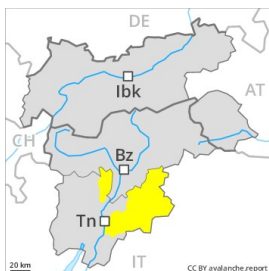
Tendency: Constant avalanche danger →
 on Friday 08 03 2019



Gliding snow



PM:



Tendency: Constant avalanche danger →
 on Friday 08 03 2019



New snow



Wind-drifted snow



Fresh snow and wind slabs in particular adjacent to ridgelines and in gullies and bowls.

As a consequence of the fresh snow numerous dry loose snow avalanches are possible as the day progresses, but they will be mostly small. The mostly shallow wind slabs of the last few days must be evaluated with care and prudence in all aspects. These can in some places be released by small loads. This applies especially on very steep shady slopes adjacent to ridgelines and in pass areas. These avalanche prone locations are clearly recognisable to the trained eye.

Snowpack

5 to 10 cm of snow, and even more in some localities, will fall above approximately 1500 m. The wind will be moderate to strong at times. In particular adjacent to ridgelines and in gullies and bowls as well as in high Alpine regions wind slabs will form. Faceted weak layers exist deeper in the old snowpack especially in shady places that are protected from the wind.

Tendency

The danger of dry and moist avalanches will increase during the day.