

Avalanche Forecast

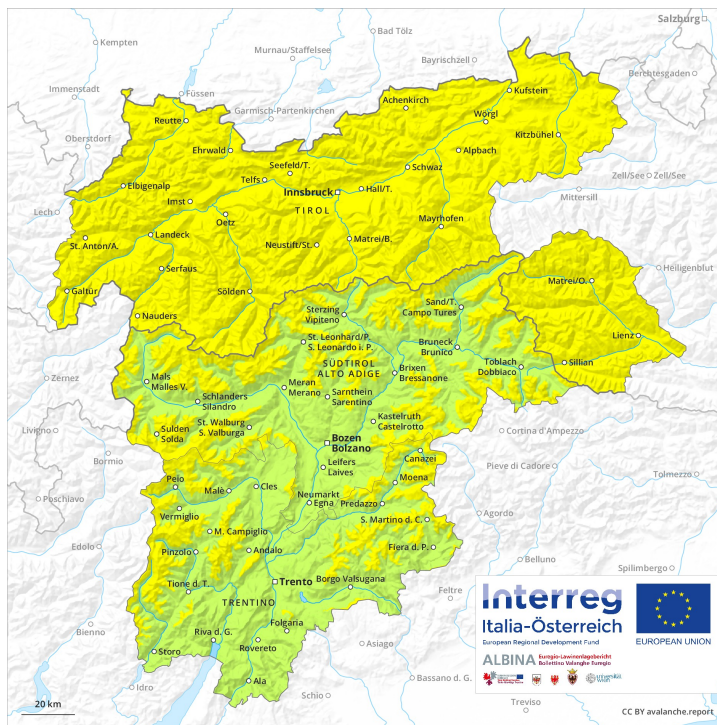
Thursday 07 03 2019

Published 06 03 2019, 17:13

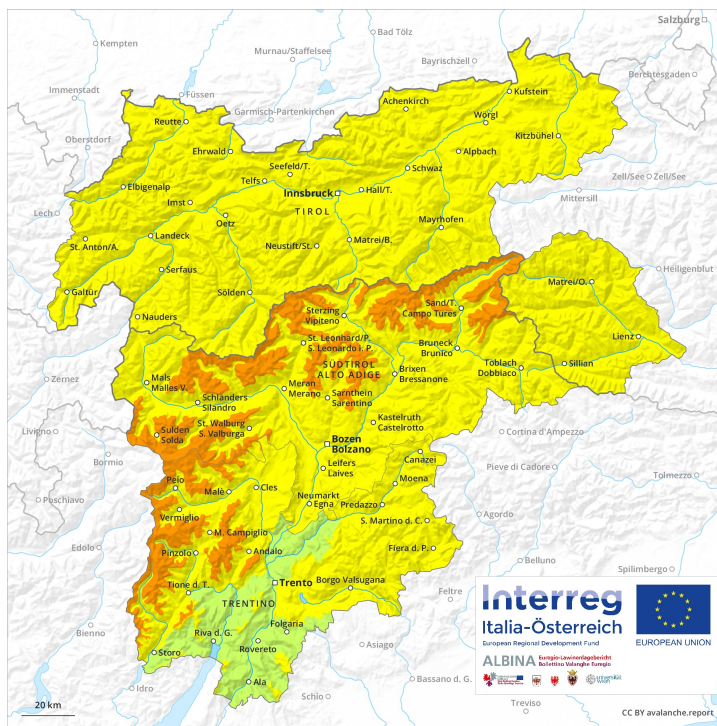


Avalanche.report

AM

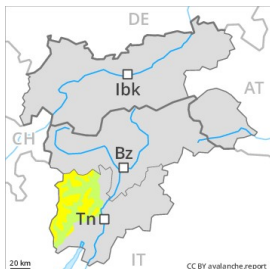


PM

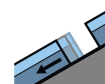


Danger Level 3 - Considerable

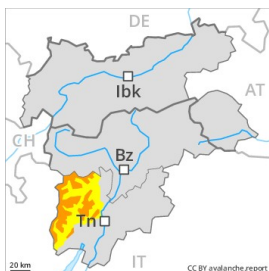
AM:



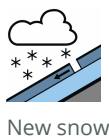
Tendency: Constant avalanche danger →
 on Friday 08 03 2019



PM:



Tendency: Constant avalanche danger →
 on Friday 08 03 2019



Fresh snow and wind slabs in particular adjacent to ridgelines and in gullies and bowls.

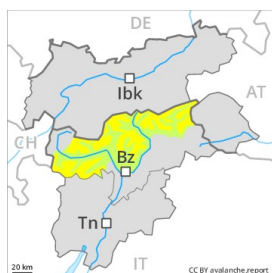
As a consequence of the fresh snow numerous loose snow avalanches are possible from the late morning, but they can reach medium size in isolated cases. The sometimes avalanche-prone wind slabs of the last few days must be evaluated with care and prudence in all aspects. These can in many cases be released by small loads or triggered naturally. This applies especially on very steep shady slopes adjacent to ridgelines and in pass areas. These avalanche prone locations are sometimes covered with fresh snow and are therefore barely recognisable because of the poor visibility.

Snowpack

20 to 30 cm of snow, and even more in some localities, will fall from late morning above approximately 1500 m. The wind will be moderate to strong at times. In particular adjacent to ridgelines and in gullies and bowls as well as in high Alpine regions wind slabs will form. The fresh snow and wind slabs are bonding only slowly with the old snowpack in all aspects. Faceted weak layers exist deeper in the old snowpack especially in shady places that are protected from the wind.

Danger Level 3 - Considerable

AM:



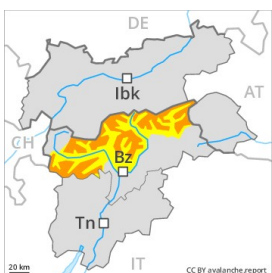
Tendency: Constant avalanche danger →
 on Friday 08 03 2019



Wind-drifted
 snow



PM:



Tendency: Constant avalanche danger →
 on Friday 08 03 2019



Wind-drifted
 snow



As the day progresses danger level 3 (considerable) will be reached in the regions exposed to heavier precipitation above approximately 1800 m.

The fresh wind slabs can over a wide area be released by a single winter sport participant. These avalanche prone locations are widespread. Some small and medium-sized natural avalanches are possible. Dry avalanches can in isolated cases be released in the old snowpack by large loads. This applies especially at transitions from a shallow to a deep snowpack especially above approximately 2000 m. The avalanche prone locations are rather rare but are difficult to recognise. Mostly avalanches are medium-sized.

Snowpack

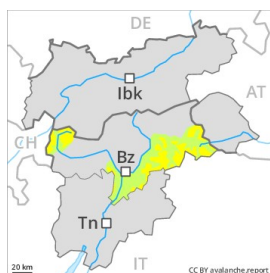
Over a wide area stormy weather and fresh snow above approximately 1500 m. In particular adjacent to ridgelines and in gullies and bowls as well as in high Alpine regions easily released wind slabs will form. Faceted weak layers exist deeper in the old snowpack especially in shady places that are protected from the wind.

Tendency

Slight decrease in avalanche danger.

Danger Level 2 - Moderate

AM:



Treeline

Tendency: Constant avalanche danger →
on Friday 08 03 2019

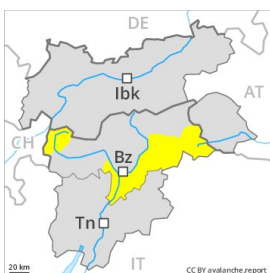


Wind-drifted
snow



Treeline

PM:



Treeline

Tendency: Constant avalanche danger →
on Friday 08 03 2019



Wind-drifted
snow



Treeline

Fresh snow and wind slabs in particular adjacent to ridgelines and in gullies and bowls.

As a consequence of the fresh snow dry loose snow avalanches are possible as the day progresses, but they will be mostly small. In addition the wind slabs are easily triggered. This applies especially on steep slopes adjacent to ridgelines and in pass areas. These avalanche prone locations are clearly recognisable to the trained eye.

Snowpack

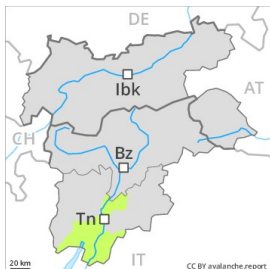
5 to 10 cm of snow, and even more in some localities, will fall above approximately 1500 m. The wind will be storm force. In particular adjacent to ridgelines and in gullies and bowls as well as in high Alpine regions wind slabs will form. Faceted weak layers exist deeper in the old snowpack especially in shady places that are protected from the wind.

Tendency

The avalanche danger will persist.

Danger Level 2 - Moderate

AM:



Tendency: Constant avalanche danger →
on Friday 08 03 2019



PM:



Tendency: Constant avalanche danger →
on Friday 08 03 2019



Fresh snow and wind slabs above approximately 1800 m.

The mostly small wind slabs must be evaluated with care and prudence in all aspects. These are mostly shallow but can be released easily especially at their margins. The avalanche prone locations are to be found in particular on northwest to north to southeast facing aspects above the tree line. As the rain becomes heavier, the likelihood of wet loose snow avalanches being released will increase gradually in all aspects at low and intermediate altitudes.

Snowpack

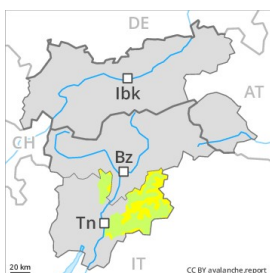
5 cm of snow, and up to 10 cm in some localities, will fall from early morning above approximately 1800 m. Up to 2000 m and above rain will fall in some localities. The wind will be moderate to strong at times. In particular adjacent to ridgelines and in gullies and bowls mostly small wind slabs will form. The old snowpack will be generally subject to considerable local variations. On south facing slopes thus far only a little snow is lying in all altitude zones.

Tendency

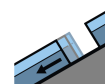
In all aspects a mostly favourable avalanche situation will prevail. The danger of moist avalanches will increase a little during the day.

Danger Level 2 - Moderate

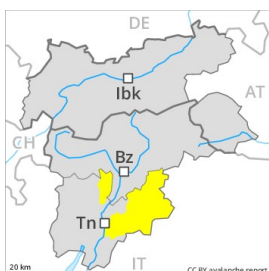
AM:



Tendency: Constant avalanche danger →
 on Friday 08 03 2019



PM:



Tendency: Constant avalanche danger →
 on Friday 08 03 2019



Fresh snow and wind slabs in particular adjacent to ridgelines and in gullies and bowls.

As a consequence of the fresh snow numerous dry loose snow avalanches are possible as the day progresses, but they will be mostly small. The mostly shallow wind slabs of the last few days must be evaluated with care and prudence in all aspects. These can in some places be released by small loads. This applies especially on very steep shady slopes adjacent to ridgelines and in pass areas. These avalanche prone locations are clearly recognisable to the trained eye.

Snowpack

5 to 10 cm of snow, and even more in some localities, will fall above approximately 1500 m. The wind will be moderate to strong at times. In particular adjacent to ridgelines and in gullies and bowls as well as in high Alpine regions wind slabs will form. Faceted weak layers exist deeper in the old snowpack especially in shady places that are protected from the wind.

Tendency

The danger of dry and moist avalanches will increase during the day.

Danger Level 2 - Moderate



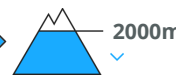
Tendency: Constant avalanche danger →
on Friday 08 03 2019



Wind-drifted
snow



Wet snow



Fresh wind slabs represent the main danger. Slight increase in danger of moist snow slides as a consequence of the rain.

As a consequence of fresh snow and a strong to storm force wind from variable directions, sometimes avalanche prone wind slabs will form. The avalanche prone locations are to be found on very steep shady slopes above approximately 2200 m. The fresh wind slabs can be released, even by a single winter sport participant and reach medium size. At elevated altitudes avalanche prone locations are more prevalent. The avalanche prone locations are barely recognisable because of the poor visibility. As a consequence of the rain more frequent moist snow slides are possible. This applies on extremely steep slopes.

Snowpack

Danger patterns

dp 6: cold, loose snow and wind

dp 3: rain

5 to 15 cm of snow, and even more in some localities, will fall above approximately 1500 m. The wind will be strong to storm force in some regions. The fresh wind slabs will be deposited on soft layers on shady slopes above approximately 2200 m. In some cases the wind slabs have bonded poorly with the old snowpack. The old snowpack will be stable over a wide area. The snowpack will be wet all the way through at low and intermediate altitudes.

Tendency

The avalanche danger will increase but remain within the current danger level.

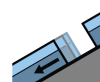
Danger Level 2 - Moderate



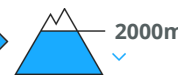
Tendency: Constant avalanche danger →
 on Friday 08 03 2019



Wind-drifted
 snow



Gliding snow



Fresh wind slabs represent the main danger. Caution is to be exercised in areas with glide cracks.

As a consequence of fresh snow and a strong to storm force wind from variable directions, sometimes avalanche prone wind slabs will form. The avalanche prone locations are to be found on very steep shady slopes above approximately 2200 m, also adjacent to ridgelines in all aspects at high altitudes and in high Alpine regions. The fresh wind slabs can be released, even by a single winter sport participant and reach medium size. At elevated altitudes avalanche prone locations are more prevalent. The avalanche prone locations are barely recognisable because of the poor visibility. In addition a latent danger of gliding avalanches exists. This applies on steep sunny slopes below approximately 2600 m as well as in all aspects below approximately 2000 m. As a consequence of the rain more frequent gliding avalanches are possible. Caution is to be exercised in areas with glide cracks.

Snowpack

Danger patterns

dp 6: cold, loose snow and wind

dp 2: gliding snow

5 to 15 cm of snow, and even more in some localities, will fall above approximately 1500 m. The wind will be strong to storm force in some regions. The fresh wind slabs will be deposited on soft layers on shady slopes above approximately 2200 m. In some cases the wind slabs have bonded poorly with the old snowpack. The old snowpack will be stable over a wide area. The snowpack will be wet all the way through at low and intermediate altitudes.

Tendency

The avalanche danger will increase but remain within the current danger level.