

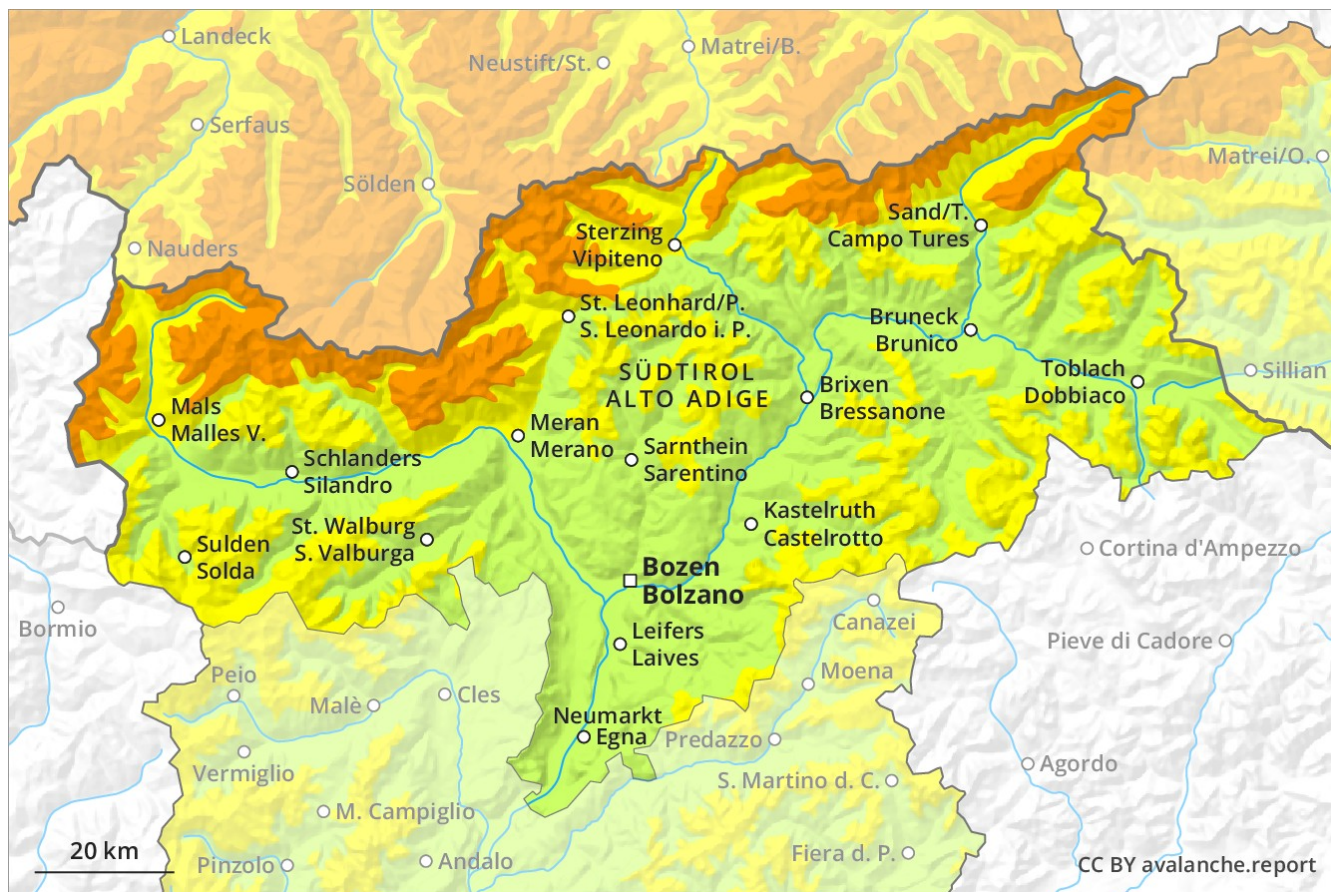
Avalanche Forecast

Monday 11 03 2019

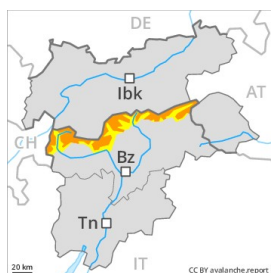
Published 10 03 2019, 17:00



Avalanche.report



Danger Level 3 - Considerable



Tendency: Decreasing avalanche danger
on Tuesday 12 03 2019



Wind-drifted
snow



Treeline

Fresh wind slabs require caution.

In particular in the north snowfall. The sometimes storm force wind will transport the fresh snow. The fresh wind slabs can be released easily by a single winter sport participant in all aspects above approximately 2000 m. At elevated altitudes avalanche prone locations are more prevalent and the danger is greater. These avalanche prone locations are quite prevalent and are barely recognisable because of the poor visibility. Until the evening the likelihood of natural avalanches being released will increase a little. In addition a latent danger of gliding avalanches exists. Caution is to be exercised in areas with glide cracks.

Snowpack

Danger patterns

dp 6: cold, loose snow and wind

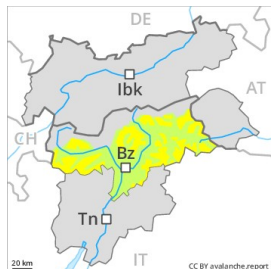
dp 2: gliding snow

In particular in the north over a wide area 15 cm of snow, and up to 25 cm in some localities, will fall. The storm force foehn wind will transport the fresh and old snow. The fresh wind slabs are lying on soft layers in all aspects above approximately 2000 m. Faceted weak layers exist in the bottom section of the old snowpack in particular on shady slopes.

Tendency

The avalanche danger will decrease.

Danger Level 2 - Moderate



Tendency: Constant avalanche danger →
on Tuesday 12 03 2019



Wind-drifted
snow



Fresh wind slabs require caution.

The fresh wind slabs can be released even by a single winter sport participant in all aspects above approximately 2200 m. Avalanches can reach medium size. At elevated altitudes avalanche prone locations are more prevalent and the danger is slightly greater.

Snowpack

Danger patterns

dp 6: cold, loose snow and wind

The storm force foehn wind will transport the fresh and old snow. The fresh wind slabs are lying on soft layers in particular on west to north to east facing aspects above approximately 2200 m. They are mostly rather small but in some cases prone to triggering. In the regions with a lot of snow the wind slabs are larger. The fresh wind slabs have bonded well with the old snowpack on steep sunny slopes and generally at low and intermediate altitudes. Faceted weak layers exist in the bottom section of the old snowpack in particular on shady slopes.

Tendency

The avalanche danger will persist.