

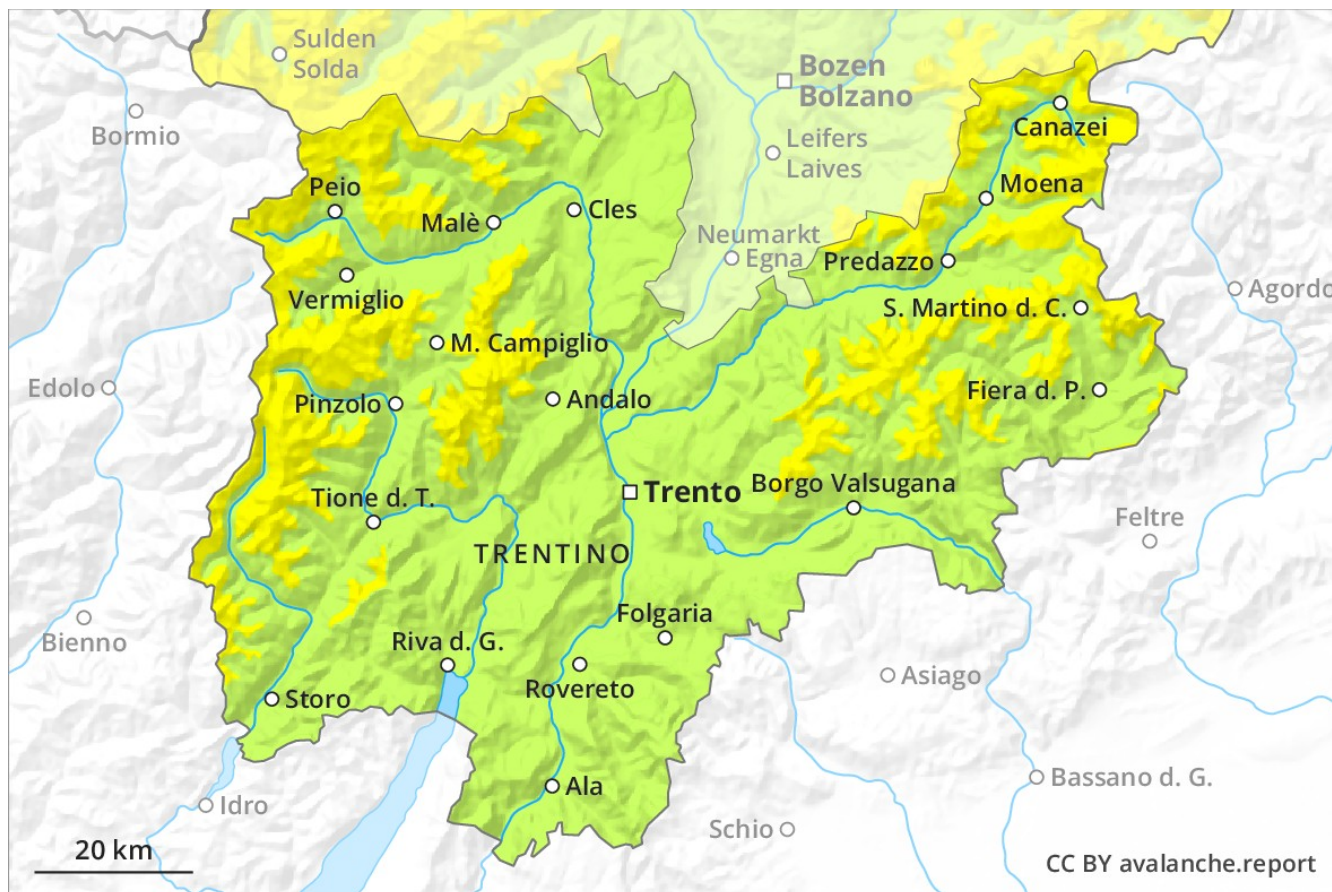
Avalanche Forecast

Tuesday 12 03 2019

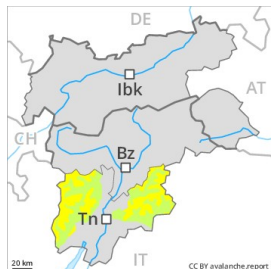
Published 11 03 2019, 17:00



Avalanche.report



Danger Level 2 - Moderate



Tendency: Constant avalanche danger →
on Wednesday 13 03 2019



Wind-drifted
snow



Treeline

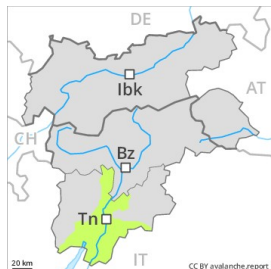
Fresh wind slabs in particular adjacent to ridgelines and in gullies and bowls.

The fresh wind slabs represent the main danger. These can be released, in particular by large loads. In extremely steep terrain and adjacent to ridgelines and in gullies and bowls individual natural avalanches are possible, but they will be mostly small. The avalanche prone locations are numerous but are clearly recognisable to the trained eye.

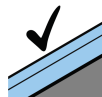
Snowpack

The surface of the snowpack has frozen to form a strong crust. The fresh snow and wind slabs of last week have bonded quite well with the old snowpack in all aspects. Until the early morning the wind will be moderate to strong over a wide area. In particular adjacent to ridgelines and in gullies and bowls further wind slabs will form. Faceted weak layers exist deeper in the old snowpack especially in shady places that are protected from the wind.

Danger Level 1 - Low



Tendency: Constant avalanche danger →
on Wednesday 13 03 2019



Favourable situation



Treeline

Only a little snow is lying on north and northeast facing slopes. In all aspects a mostly favourable avalanche situation will prevail.

The mostly small wind slabs of last week can be released, especially by large additional loads,. The avalanche prone locations are to be found at high altitude and adjacent to ridgelines and in gullies and bowls above approximately 1800 m.

Snowpack

The old snowpack will be generally subject to considerable local variations. Below approximately 1800 m only a little snow is lying on north and northeast facing slopes. Adjacent to ridgelines and in gullies and bowls mostly small wind slabs formed. On south facing slopes no snow is lying in all altitude zones.