

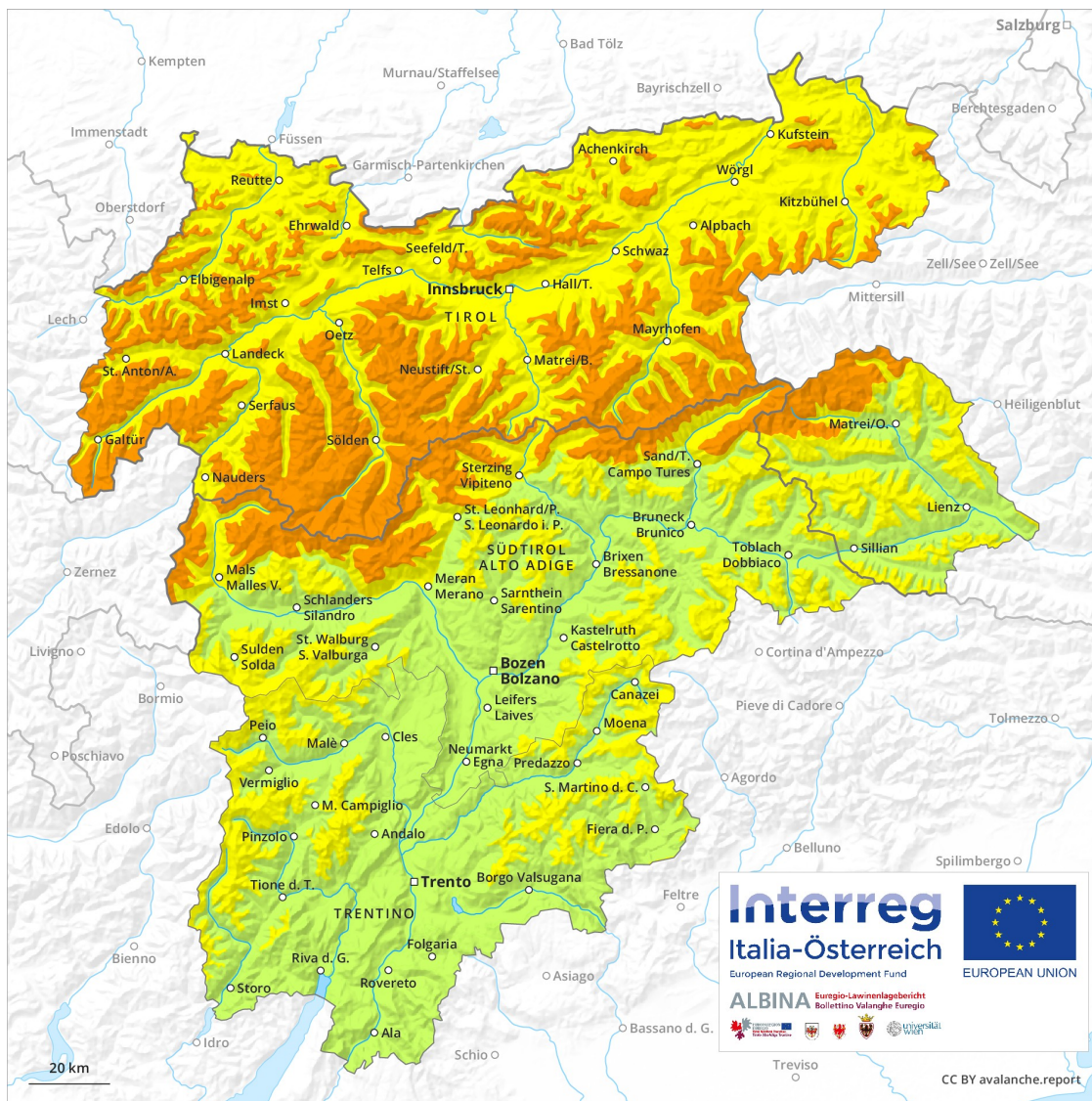
Avalanche Forecast

Tuesday 12 03 2019

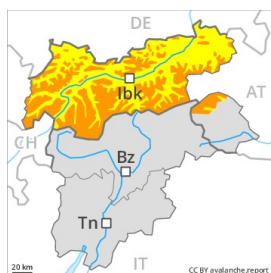
Published 12 03 2019, 08:01



Avalanche.report



Danger Level 3 - Considerable



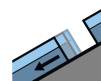
Tendency: Constant avalanche danger
on Wednesday 13 03 2019 →



Wind-drifted
snow



Treeline



Gliding snow



2000m

Fresh wind slabs represent the main danger. Gliding avalanches on steep grassy slopes.

As a consequence of fresh snow and a strong to storm force northwesterly wind, avalanche prone wind slabs formed. These must be evaluated with care and prudence in all aspects above the tree line. The fresh wind slabs can in many places be released, even by a single winter sport participant and reach medium size. Caution is to be exercised in particular in gullies and bowls, and behind abrupt changes in the terrain as well as in shady places that are protected from the wind. The number and size of avalanche prone locations will increase with altitude. As a consequence of warming during the day and the solar radiation, the likelihood of dry slab avalanches being released will increase a little. In addition a moderate (level 2) danger of gliding avalanches exists. These avalanche prone locations are to be found in all aspects below approximately 2000 m, also on steep sunny slopes below approximately 2600 m. Caution is to be exercised in areas with glide cracks. As a consequence of solar radiation numerous small to medium-sized moist loose snow avalanches are to be expected. This applies on extremely steep sunny slopes.

Snowpack

Danger patterns

dp 6: cold, loose snow and wind

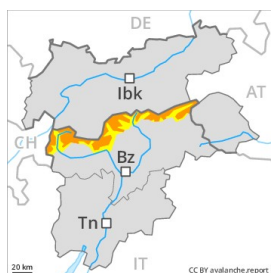
dp 2: gliding snow

Over a wide area 20 to 30 cm of snow, and up to 50 cm in some localities, has fallen since yesterday above approximately 2000 m. This applies in particular in the Lechtal Alps, in the Verwall Mountains and in the Karwendel Mountains. The storm force wind has transported the fresh and old snow significantly. The fresh wind slabs are lying on soft layers in all aspects above the tree line. They are in isolated cases thick and to be assessed with care and prudence. The snowpack will be subject to considerable local variations. The old snowpack will be stable over a wide area. The old snowpack will be wet all the way through at low and intermediate altitudes.

Tendency

The avalanche danger will persist.

Danger Level 3 - Considerable



Tendency: Decreasing avalanche danger
on Wednesday 13 03 2019



Wind-drifted
snow



Treeline

Fresh wind slabs represent the main danger.

As a consequence of fresh snow and a strong to storm force northwesterly wind, avalanche prone wind slabs formed. These must be evaluated with care and prudence in all aspects above the tree line. The fresh wind slabs can in many places be released, even by a single winter sport participant and reach medium size. Caution is to be exercised in particular in gullies and bowls, and behind abrupt changes in the terrain as well as on very steep shady slopes. The number and size of avalanche prone locations will increase with altitude. As a consequence of warming during the day and the solar radiation, the likelihood of slab avalanches being released will increase appreciably. In addition the danger of moist loose snow avalanches will increase in the afternoon. This applies on extremely steep sunny slopes. Caution is to be exercised in areas with glide cracks. Backcountry touring calls for experience in the assessment of avalanche danger.

Snowpack

Danger patterns

dp 6: cold, loose snow and wind

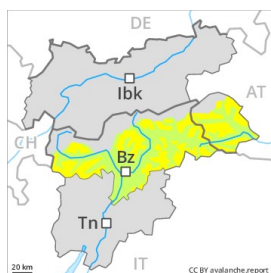
dp 2: gliding snow

Up to 15 cm of snow will fall until the early morning. The storm force wind has transported the fresh and old snow significantly. The fresh wind slabs are lying on soft layers in all aspects above the tree line. They are in isolated cases thick and to be assessed with care and prudence. The snowpack will be subject to considerable local variations. The old snowpack will be quite stable. The old snowpack will be wet all the way through at low and intermediate altitudes.

Tendency

The avalanche danger will persist.

Danger Level 2 - Moderate



Tendency: Constant avalanche danger →
on Wednesday 13 03 2019



Wind-drifted
snow



Fresh wind slabs require caution. Caution is to be exercised in areas with glide cracks.

The fresh wind slabs can be released by a single winter sport participant in some cases in particular on northwest to north to northeast facing aspects above approximately 2200 m. In the regions neighbouring those that are subject to danger level 3 (considerable) and at elevated altitudes the avalanche prone locations are to be found in all aspects. The wind slabs are mostly small. They are clearly recognisable to the trained eye. In addition a low (level 1) danger of gliding avalanches exists. This applies in particular on steep sunny slopes below approximately 2600 m, especially in the regions with a lot of snow in the north. Caution is to be exercised in areas with glide cracks. As a consequence of solar radiation more frequent mostly small moist loose snow avalanches are to be expected. This applies in the regions exposed to precipitation on extremely steep sunny slopes.

Snowpack

Danger patterns

dp 6: cold, loose snow and wind

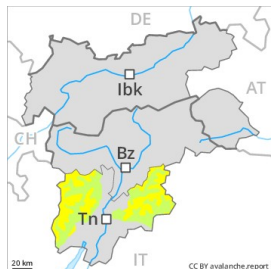
dp 2: gliding snow

Over a wide area 5 to 10 cm of snow, and even more in some localities, has fallen since yesterday. The sometimes storm force wind has transported the fresh and old snow. The fresh wind slabs are lying on soft layers in particular on northwest to north to northeast facing aspects above approximately 2200 m. In very isolated cases weak layers exist in the bottom section of the old snowpack on shady slopes, in particular in areas close to the tree line in little used backcountry terrain. The snowpack will be wet all the way through at low and intermediate altitudes.

Tendency

The avalanche danger will persist.

Danger Level 2 - Moderate



Tendency: Constant avalanche danger →
on Wednesday 13 03 2019



Wind-drifted
snow



Treeline

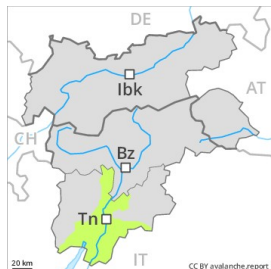
Fresh wind slabs in particular adjacent to ridgelines and in gullies and bowls.

The fresh wind slabs represent the main danger. These can be released, in particular by large loads. In extremely steep terrain and adjacent to ridgelines and in gullies and bowls individual natural avalanches are possible, but they will be mostly small. The avalanche prone locations are numerous but are clearly recognisable to the trained eye.

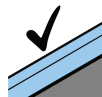
Snowpack

The surface of the snowpack has frozen to form a strong crust. The fresh snow and wind slabs of last week have bonded quite well with the old snowpack in all aspects. Until the early morning the wind will be moderate to strong over a wide area. In particular adjacent to ridgelines and in gullies and bowls further wind slabs will form. Faceted weak layers exist deeper in the old snowpack especially in shady places that are protected from the wind.

Danger Level 1 - Low



Tendency: Constant avalanche danger →
on Wednesday 13 03 2019



Favourable situation



Treeline

Only a little snow is lying on north and northeast facing slopes. In all aspects a mostly favourable avalanche situation will prevail.

The mostly small wind slabs of last week can be released, especially by large additional loads,. The avalanche prone locations are to be found at high altitude and adjacent to ridgelines and in gullies and bowls above approximately 1800 m.

Snowpack

The old snowpack will be generally subject to considerable local variations. Below approximately 1800 m only a little snow is lying on north and northeast facing slopes. Adjacent to ridgelines and in gullies and bowls mostly small wind slabs formed. On south facing slopes no snow is lying in all altitude zones.