

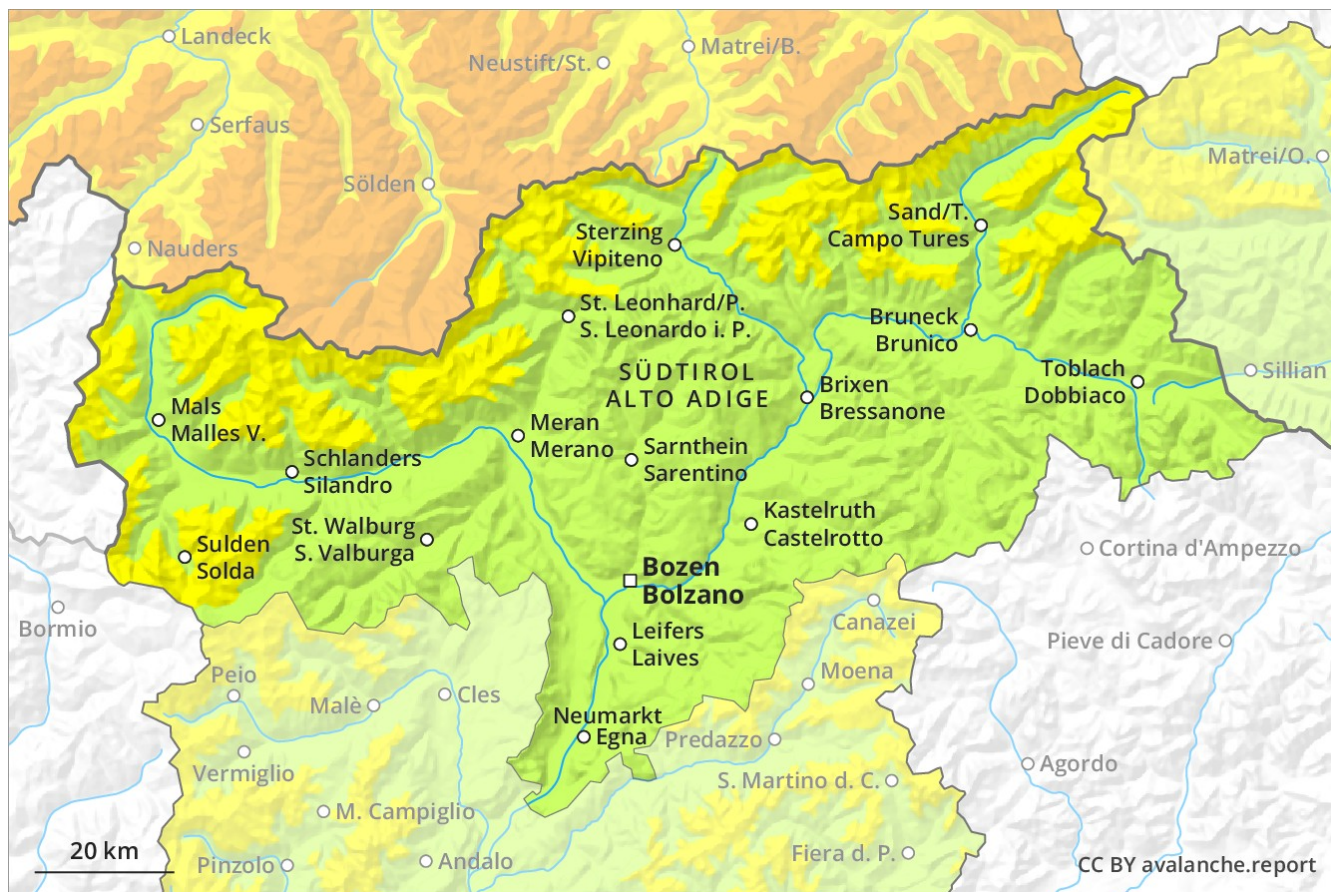
Avalanche Forecast

Wednesday 13 03 2019

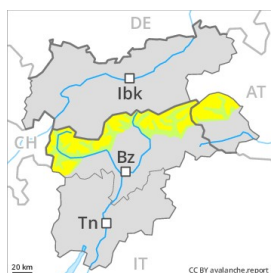
Published 12 03 2019, 17:00



Avalanche.report



Danger Level 2 - Moderate



Tendency: Increasing avalanche danger
on Thursday 14 03 2019



Wind-drifted
snow



Fresh wind slabs represent the main danger.

As a consequence of fresh snow and a strong to storm force northwesterly wind, avalanche prone wind slabs formed. These must be evaluated with care and prudence in particular on northwest to north to east facing aspects at intermediate and high altitudes. The fresh wind slabs can in some places be released by a single winter sport participant and reach medium size. Caution is to be exercised in particular in gullies and bowls, and behind abrupt changes in the terrain as well as on very steep shady slopes. The number and size of avalanche prone locations will increase with altitude. In addition the danger of moist loose snow avalanches will increase in the afternoon. Caution is to be exercised in areas with glide cracks. In addition a low (level 1) danger of gliding avalanches exists. This applies in particular on steep sunny slopes below approximately 2600 m. Backcountry touring calls for experience in the assessment of avalanche danger.

Snowpack

Danger patterns

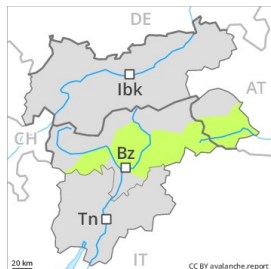
dp 6: cold, loose snow and wind

In some regions up to 15 cm of snow has fallen in the last few days. The storm force wind has transported the fresh and old snow significantly. The fresh wind slabs are lying on soft layers in particular on steep shady slopes at high altitudes and in high Alpine regions. They are in isolated cases thick and to be assessed with care and prudence. The snowpack will be subject to considerable local variations. The old snowpack will be quite stable. The old snowpack will be wet all the way through at low and intermediate altitudes.

Tendency

Increase in avalanche danger as a consequence of fresh snow and wind.

Danger Level 1 - Low



Tendency: Increasing avalanche danger
on Thursday 14 03 2019



Wind-drifted
snow



2200m

Fresh wind slabs require caution.

The fresh wind slabs can be released by a single winter sport participant in isolated cases on northwest to north to northeast facing aspects above approximately 2200 m. The wind slabs are mostly small. The avalanche prone locations are to be found in particular adjacent to ridgelines. In regions neighbouring those that are subject to danger level 2 (moderate) and at elevated altitudes avalanche prone locations are a little more prevalent and the danger is slightly greater. Caution is to be exercised in areas with glide cracks.

Snowpack

Danger patterns

dp 6: cold, loose snow and wind

The weather will be partly cloudy. Some snow will fall in some regions. Up to 10 cm of snow. has fallen in the last few days. The sometimes storm force wind has transported the fresh and old snow. Fresh wind slabs have bonded quite well with the old snowpack. In very isolated cases weak layers exist in the bottom section of the old snowpack on shady slopes, in particular in areas close to the tree line in little used backcountry terrain. The snowpack will be wet all the way through at low and intermediate altitudes.

Tendency

Increase in avalanche danger as a consequence of fresh snow and wind.

Danger Level 1 - Low



Tendency: Increasing avalanche danger
on Thursday 14 03 2019



Wind-drifted
snow



2200m

A generally favourable avalanche situation will prevail.

Avalanches can in isolated cases be released by large loads, but they will be small in most cases. This applies especially on steep shady slopes above approximately 2200 m. Slight increase in danger of moist and wet snow slides as a consequence of solar radiation.

Snowpack

The old snowpack will be subject to considerable local variations. Only a little snow is lying. Faceted weak layers exist in the bottom section of the old snowpack.

Tendency

Increase in avalanche danger as a consequence of fresh snow and wind.