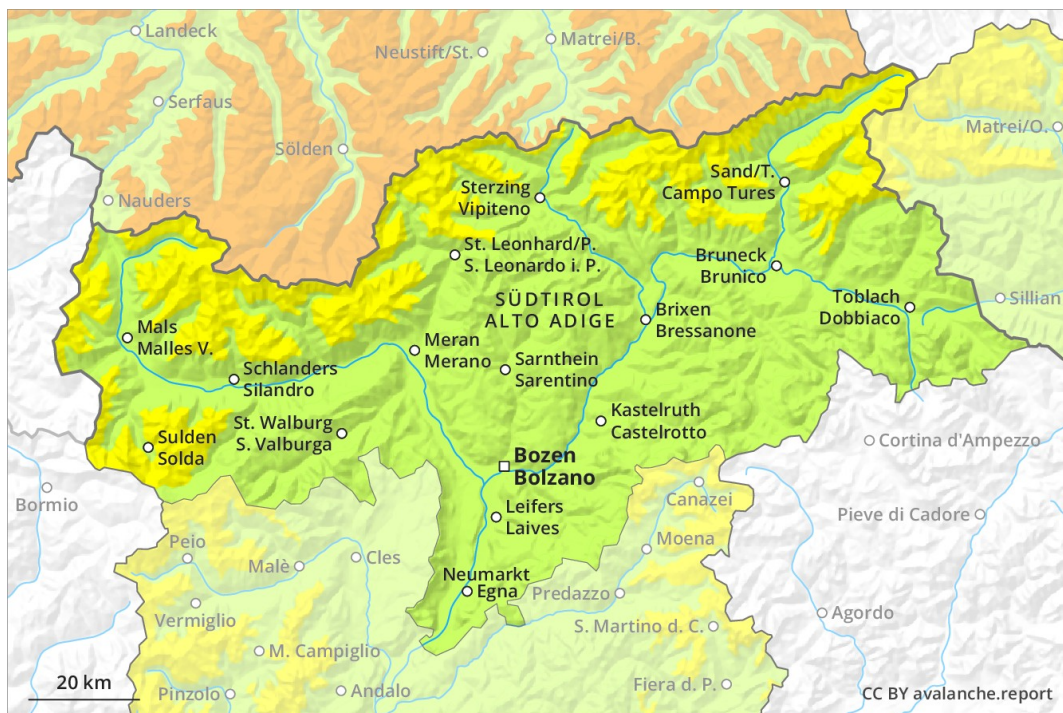
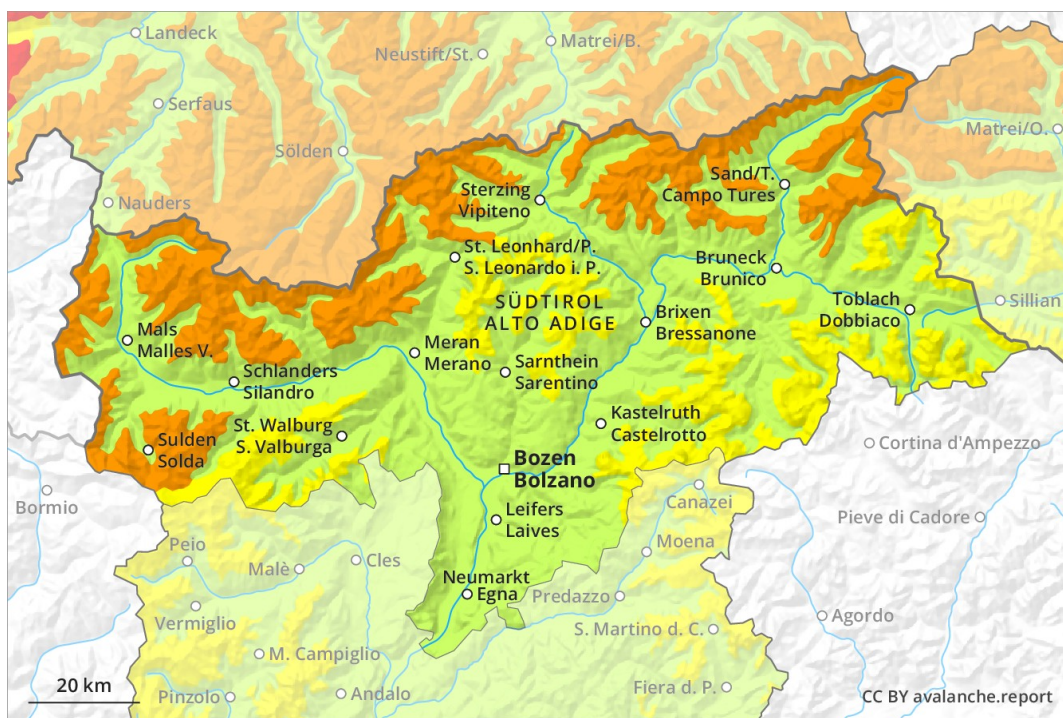


AM

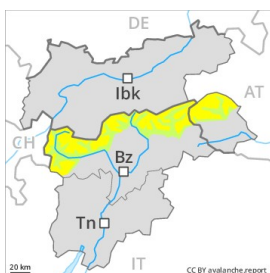


PM



Danger Level 3 - Considerable

AM:



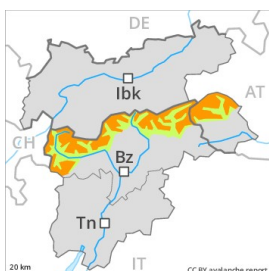
Tendency: Increasing avalanche danger
 on Friday 15 03 2019



Wind-drifted
 snow



PM:



Tendency: Increasing avalanche danger
 on Friday 15 03 2019



Wind-drifted
 snow



Gradual increase in avalanche danger as a consequence of fresh snow and strong wind. Fresh wind slabs represent the main danger.

The fresh wind slabs can in some places be released by a single winter sport participant and reach medium size. These must be evaluated with care and prudence in particular on northwest to north to east facing aspects at high altitudes and in high Alpine regions. Caution is to be exercised in particular in gullies and bowls, and behind abrupt changes in the terrain as well as on very steep shady slopes. The number and size of avalanche prone locations will increase with altitude. Towards the evening as the snowfall becomes more intense there will be a gradual increase in the danger of dry avalanches to level 3 (considerable). The fresh wind slabs must be evaluated with care and prudence in all aspects above the tree line. The prevalence of avalanche prone locations and likelihood of triggering will increase during the night. Backcountry touring calls for experience in the assessment of avalanche danger.

Snowpack

Danger patterns

dp 6: cold, loose snow and wind

15 to 30 cm of snow. will fall. The moderate wind will transport the fresh snow. The fresh wind slabs are lying on soft layers at high altitudes and in high Alpine regions. They are in some cases thick and to be assessed with care and prudence. The snowpack will be subject to considerable local variations. The old snowpack will be quite stable. The old snowpack will be moist at low and intermediate altitudes.

Tendency

As a consequence of fresh snow and wind there will be an increase in the avalanche danger within the current danger level.

Danger Level 2 - Moderate

AM:



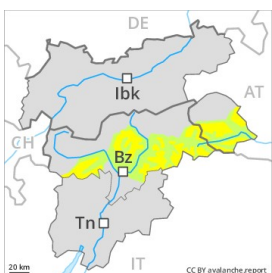
Tendency: Constant avalanche danger →
 on Friday 15 03 2019



Wind-drifted
 snow



PM:



Tendency: Constant avalanche danger →
 on Friday 15 03 2019



Wind-drifted
 snow



Slight increase in avalanche danger as a consequence of fresh snow and wind. Fresh wind slabs require caution.

The fresh wind slabs can be released by a single winter sport participant in isolated cases on northwest to north to northeast facing aspects above approximately 2200 m. The wind slabs are mostly small. The avalanche prone locations are to be found in particular adjacent to ridgelines. In the north and at elevated altitudes avalanche prone locations are a little more prevalent and the danger is slightly greater. In the evening as a consequence of fresh snow and wind there will be a gradual increase in the avalanche danger to level 2 (moderate). The prevalence of avalanche prone locations and likelihood of triggering will increase during the night.

Snowpack

Danger patterns

dp 6: cold, loose snow and wind

5 to 15 cm of snow, and up to 20 cm in some localities, will fall. The wind will transport the snow. Individual weak layers exist in the bottom section of the old snowpack on shady slopes, in particular in areas close to the tree line in little used backcountry terrain. The snowpack will be moist at low and intermediate altitudes.

Tendency

As a consequence of fresh snow and wind there will be an increase in the avalanche danger within the current danger level.

Danger Level 1 - Low



Tendency: Constant avalanche danger →
on Friday 15 03 2019



Wind-drifted
snow



A generally favourable avalanche situation will prevail.

Avalanches can in isolated cases be released by large loads, but they will be small in most cases. This applies especially on steep shady slopes above approximately 2200 m. In particular in gullies and bowls, and behind abrupt changes in the terrain the wind slabs will increase in size moderately in the evening.

Snowpack

Up to 5 cm of snow, and even more in some localities, will fall. The old snowpack will be subject to considerable local variations. Only a little snow is lying. Faceted weak layers exist in the bottom section of the old snowpack.

Tendency

Low, level 1.