

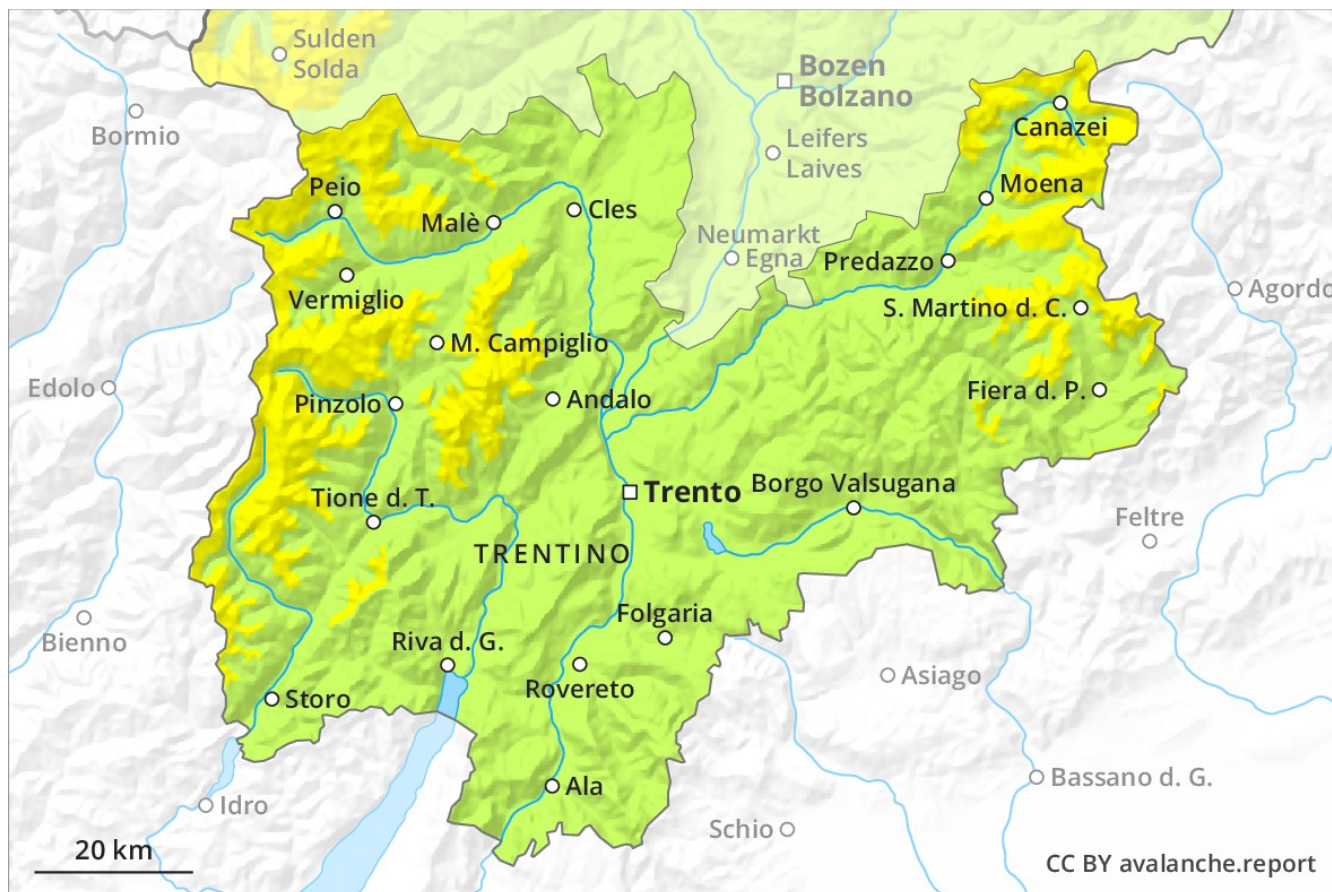
Avalanche Forecast

Thursday 14 03 2019

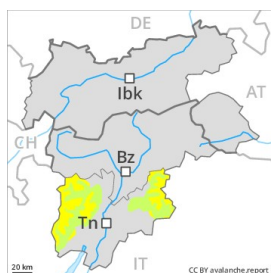
Published 13 03 2019, 17:00



Avalanche.report



Danger Level 2 - Moderate



Tendency: Increasing avalanche danger
on Friday 15 03 2019



Wind-drifted
snow



Wind slabs in particular adjacent to ridgelines and in gullies and bowls.

Hardly any more natural avalanches are to be expected. In particular shady slopes where weaknesses exist in the old snowpack are unfavourable. In addition the mostly small wind slabs of last week in particular adjacent to ridgelines and at elevated altitudes are prone to triggering in some cases still. These can be released, in particular by large loads.

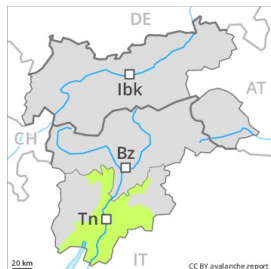
Snowpack

Outgoing longwave radiation during the night will be quite good. The surface of the snowpack will freeze to form a strong crust and will soften during the day. The fresh and somewhat older wind slabs have formed in all aspects. The fresh snow and wind slabs of last week have bonded quite well with the old snowpack in particular on sunny slopes. Faceted weak layers exist deeper in the old snowpack especially in shady places that are protected from the wind.

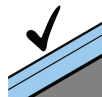
Tendency

As a consequence of fresh snow and strong wind the prevalence of avalanche prone locations will increase in the evening.

Danger Level 1 - Low



Tendency: Increasing avalanche danger
on Friday 15 03 2019



Favourable
situation



Treeline

In all altitude zones only a little snow is lying. At elevated altitudes a mostly favourable avalanche situation will prevail.

The mostly small wind slabs of last week can be released, especially by large additional loads. The avalanche prone locations are to be found in high Alpine regions and adjacent to ridgelines and in gullies and bowls above approximately 2000 m.

Snowpack

The old snowpack will be subject to considerable local variations. Only a little snow is lying on north and northeast facing slopes. Adjacent to ridgelines and in gullies and bowls mostly small wind slabs formed. On south facing slopes no snow is lying in all altitude zones.

Tendency

As a consequence of fresh snow and strong wind the prevalence of avalanche prone locations will increase in the evening. In these regions above approximately 2000 m possibly danger level 2 (moderate) will be reached.