

# Avalanche Forecast

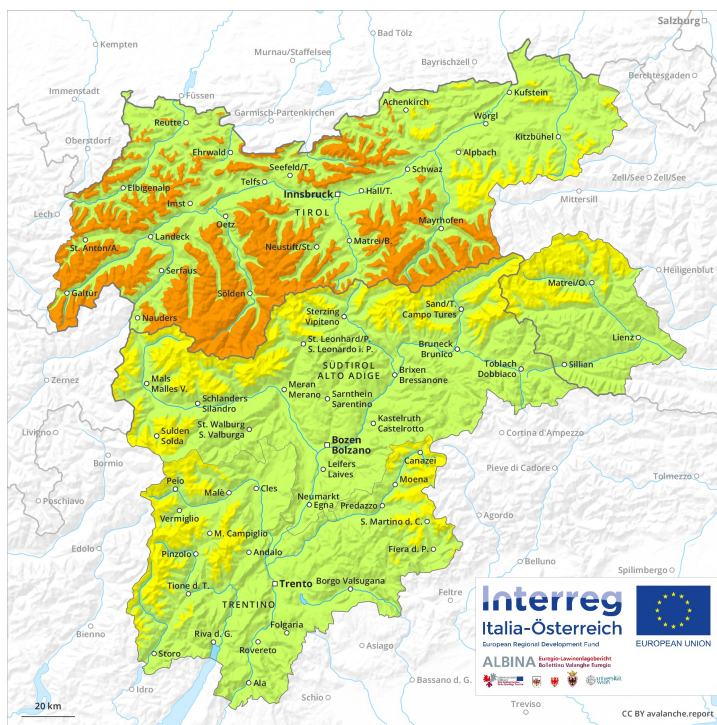
## Thursday 14 03 2019

Published 13 03 2019, 17:00

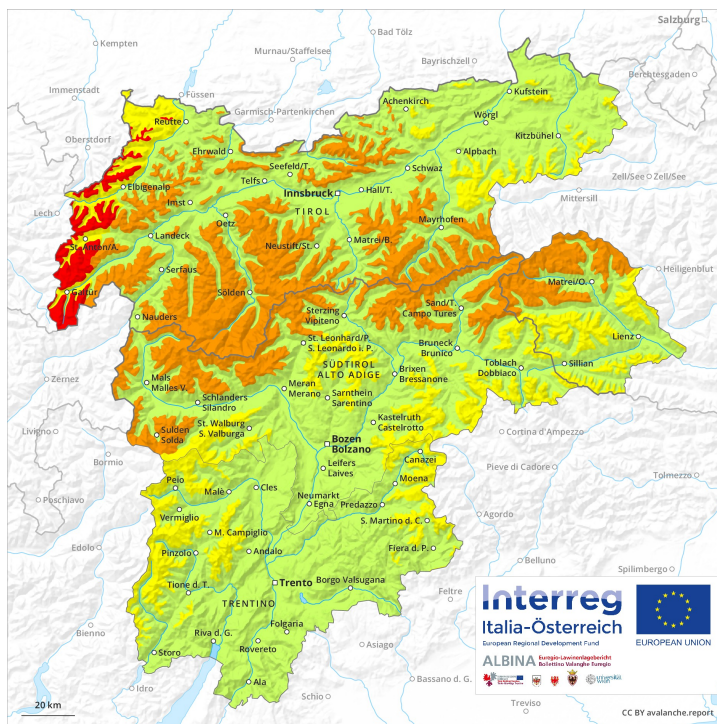


Avalanche.report

### AM

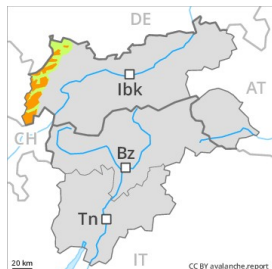


### PM



## Danger Level 4 - High

AM:



**Tendency: Constant avalanche danger** →  
 on Friday 15 03 2019

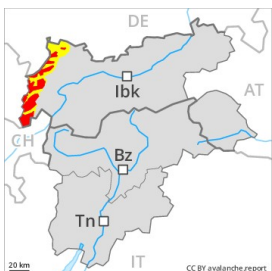


Wind-drifted  
 snow



Treeline

PM:



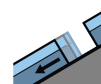
**Tendency: Constant avalanche danger** →  
 on Friday 15 03 2019



Wind-drifted  
 snow



Treeline



Gliding snow



2000m

Significant increase in avalanche danger as a consequence of fresh snow and stormy weather.

The fresh wind slabs of the last few days are to be evaluated with care and prudence. They remain prone to triggering in particular on northwest to north to east facing aspects at high altitudes and in high Alpine regions. Wind slabs can be released by small loads and reach medium size. Caution is to be exercised in particular in gullies and bowls, and behind abrupt changes in the terrain as well as in shady places that are protected from the wind. In high Alpine regions avalanche prone locations are present in all aspects. These avalanche prone locations are barely recognisable because of the poor visibility.

Evening and first half of night: Towards the evening as a consequence of fresh snow and stormy weather there will be a gradual increase in the avalanche danger to level 4 (high). Wind slabs can in many places be released easily and reach large size in isolated cases. The avalanche prone locations are to be found on steep slopes of all aspects. The prevalence of avalanche prone locations and likelihood of triggering will increase during the night. Especially at the base of rock walls and in shady places that are protected from the wind medium-sized and, in isolated cases, large natural dry avalanches are possible as the precipitation becomes more intense. In addition a moderate (level 2) danger of gliding avalanches exists. These avalanche prone locations are to be found on steep grassy slopes below approximately 2000 m, also on steep sunny slopes below approximately 2600 m. Caution is to be exercised in areas with glide cracks.

### Snowpack

**Danger patterns**

dp 6: cold, loose snow and wind

dp 2: gliding snow

10 to 15 cm of snow. will fall until late morning. 40 to 60 cm of snow. will fall from the afternoon above approximately 1000 m. The wind will be storm force over a wide area. Fresh wind slabs will be deposited on the unfavourable surface of an old snowpack in all aspects above the tree line. The wind slabs of the last



few days are lying on soft layers on northwest to north to east facing aspects above the tree line. The old snowpack will be stable over a wide area.

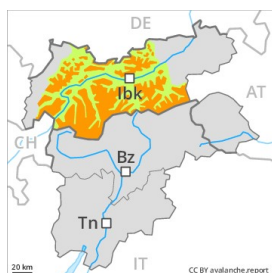
### Tendency

High avalanche danger will prevail.



## Danger Level 3 - Considerable

AM:



**Tendency: Increasing avalanche danger**  
 on Friday 15 03 2019

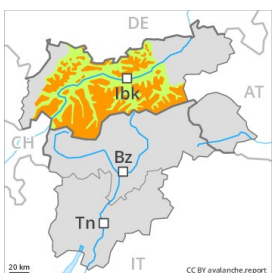


Wind-drifted  
 snow



Treeline

PM:



**Tendency: Increasing avalanche danger**  
 on Friday 15 03 2019



Wind-drifted  
 snow



Treeline

Increase in avalanche danger as a consequence of fresh snow and stormy weather.

The fresh wind slabs of the last few days must be evaluated with care and prudence. They remain prone to triggering in particular on northwest to north to east facing aspects above the tree line. Wind slabs can mostly be released by small loads and reach medium size. Caution is to be exercised in particular in gullies and bowls, and behind abrupt changes in the terrain as well as in shady places that are protected from the wind. In high Alpine regions avalanche prone locations are present in all aspects. The avalanche prone locations are barely recognisable because of the poor visibility. In addition a low (level 1) danger of gliding avalanches exists. Caution is to be exercised in areas with glide cracks.

Evening and first half of night: Towards the evening as a consequence of fresh snow and stormy weather there will be a gradual increase in the avalanche danger. Wind slabs can in many places be released easily and reach medium size. The prevalence of avalanche prone locations and likelihood of triggering will increase during the night. Small to medium-sized natural avalanches are possible especially in shady places that are protected from the wind.

### Snowpack

**Danger patterns**

dp 6: cold, loose snow and wind

dp 2: gliding snow

Over a wide area up to 10 cm of snow. will fall until late morning. 20 to 40 cm of snow. will fall from the afternoon above approximately 1000 m. The wind will be storm force. Fresh wind slabs will be deposited on the unfavourable surface of an old snowpack in all aspects above the tree line. The wind slabs of the last few days are lying on soft layers on northwest to north to east facing aspects above the tree line. The old snowpack will be stable over a wide area.



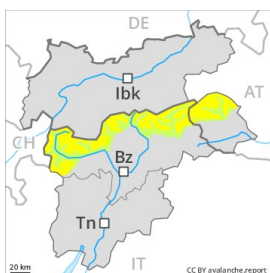
## Tendency

Further increase in danger of dry avalanches as a consequence of fresh snow and stormy weather.



## Danger Level 3 - Considerable

AM:



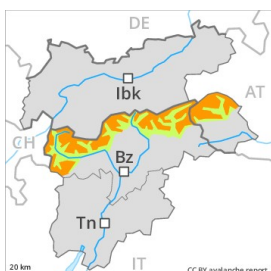
**Tendency: Increasing avalanche danger**  
 on Friday 15 03 2019



Wind-drifted  
 snow



PM:



**Tendency: Increasing avalanche danger**  
 on Friday 15 03 2019



Wind-drifted  
 snow



Gradual increase in avalanche danger as a consequence of fresh snow and strong wind. Fresh wind slabs represent the main danger.

The fresh wind slabs can in some places be released by a single winter sport participant and reach medium size. These must be evaluated with care and prudence in particular on northwest to north to east facing aspects at high altitudes and in high Alpine regions. Caution is to be exercised in particular in gullies and bowls, and behind abrupt changes in the terrain as well as on very steep shady slopes. The number and size of avalanche prone locations will increase with altitude. Towards the evening as the snowfall becomes more intense there will be a gradual increase in the danger of dry avalanches to level 3 (considerable). The fresh wind slabs must be evaluated with care and prudence in all aspects above the tree line. The prevalence of avalanche prone locations and likelihood of triggering will increase during the night. Backcountry touring calls for experience in the assessment of avalanche danger.

### Snowpack

**Danger patterns**

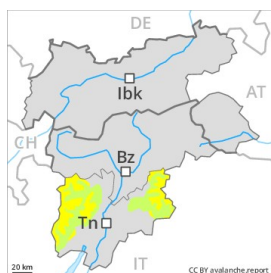
dp 6: cold, loose snow and wind

15 to 30 cm of snow. will fall. The moderate wind will transport the fresh snow. The fresh wind slabs are lying on soft layers at high altitudes and in high Alpine regions. They are in some cases thick and to be assessed with care and prudence. The snowpack will be subject to considerable local variations. The old snowpack will be quite stable. The old snowpack will be moist at low and intermediate altitudes.

### Tendency

As a consequence of fresh snow and wind there will be an increase in the avalanche danger within the current danger level.

## Danger Level 2 - Moderate



**Tendency: Increasing avalanche danger**  
on Friday 15 03 2019



Wind-drifted  
snow



Wind slabs in particular adjacent to ridgelines and in gullies and bowls.

Hardly any more natural avalanches are to be expected. In particular shady slopes where weaknesses exist in the old snowpack are unfavourable. In addition the mostly small wind slabs of last week in particular adjacent to ridgelines and at elevated altitudes are prone to triggering in some cases still. These can be released, in particular by large loads.

### Snowpack

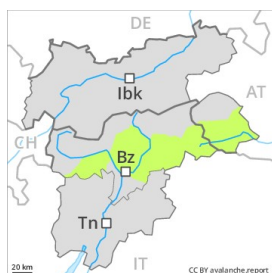
Outgoing longwave radiation during the night will be quite good. The surface of the snowpack will freeze to form a strong crust and will soften during the day. The fresh and somewhat older wind slabs have formed in all aspects. The fresh snow and wind slabs of last week have bonded quite well with the old snowpack in particular on sunny slopes. Faceted weak layers exist deeper in the old snowpack especially in shady places that are protected from the wind.

### Tendency

As a consequence of fresh snow and strong wind the prevalence of avalanche prone locations will increase in the evening.

## Danger Level 2 - Moderate

AM:



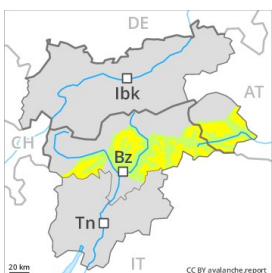
**Tendency: Constant avalanche danger** →  
 on Friday 15 03 2019



Wind-drifted  
 snow



PM:



**Tendency: Constant avalanche danger** →  
 on Friday 15 03 2019



Wind-drifted  
 snow



Slight increase in avalanche danger as a consequence of fresh snow and wind. Fresh wind slabs require caution.

The fresh wind slabs can be released by a single winter sport participant in isolated cases on northwest to north to northeast facing aspects above approximately 2200 m. The wind slabs are mostly small. The avalanche prone locations are to be found in particular adjacent to ridgelines. In the north and at elevated altitudes avalanche prone locations are a little more prevalent and the danger is slightly greater. In the evening as a consequence of fresh snow and wind there will be a gradual increase in the avalanche danger to level 2 (moderate). The prevalence of avalanche prone locations and likelihood of triggering will increase during the night.

### Snowpack

**Danger patterns**

dp 6: cold, loose snow and wind

5 to 15 cm of snow, and up to 20 cm in some localities, will fall. The wind will transport the snow. Individual weak layers exist in the bottom section of the old snowpack on shady slopes, in particular in areas close to the tree line in little used backcountry terrain. The snowpack will be moist at low and intermediate altitudes.

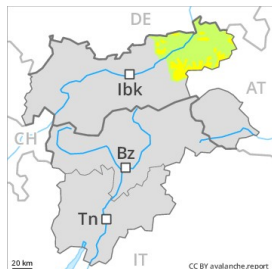
### Tendency

As a consequence of fresh snow and wind there will be an increase in the avalanche danger within the current danger level.



## Danger Level 2 - Moderate

AM:



**Tendency: Increasing avalanche danger**  
 on Friday 15 03 2019

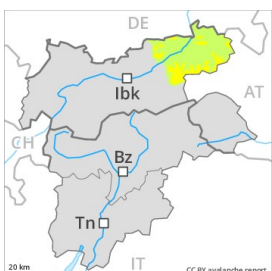


Wind-drifted  
 snow



Treeline

PM:



**Tendency: Increasing avalanche danger**  
 on Friday 15 03 2019



Wind-drifted  
 snow



Treeline

### Fresh wind slabs at high altitude.

Wind slabs can in some places be released by a single winter sport participant, but they will be small in most cases. The avalanche prone locations are to be found in particular adjacent to ridgelines and in gullies and bowls in northwest to north to east facing aspects, especially on very steep slopes above the tree line. These avalanche prone locations are barely recognisable because of the poor visibility. As a consequence of fresh snow and strong wind the prevalence and size of the avalanche prone locations will increase towards the evening. This applies in all aspects. In regions neighbouring those that are subject to danger level 3 (considerable) avalanche prone locations are more widespread and the danger is greater. In addition a low (level 1) danger of gliding avalanches exists. These avalanche prone locations are to be found in all aspects below approximately 2000 m, also on steep sunny slopes at high altitude.

### Snowpack

**Danger patterns**

dp 6: cold, loose snow and wind

dp 2: gliding snow

Some snow will fall until late morning. 10 to 20 cm of snow will fall from the afternoon above approximately 1000 m. The strong wind will transport the snow. Fresh wind slabs will be deposited on the unfavourable surface of an old snowpack in all aspects above the tree line. Older wind slabs have bonded quite well with the old snowpack. They are lying on soft layers in particular on steep shady slopes. The old snowpack will be stable over a wide area.

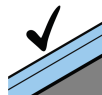
### Tendency

Increase in avalanche danger as a consequence of fresh snow and strong wind.

## Danger Level 1 - Low



**Tendency: Increasing avalanche danger**  
on Friday 15 03 2019



Favourable  
situation



Treeline

In all altitude zones only a little snow is lying. At elevated altitudes a mostly favourable avalanche situation will prevail.

The mostly small wind slabs of last week can be released, especially by large additional loads. The avalanche prone locations are to be found in high Alpine regions and adjacent to ridgelines and in gullies and bowls above approximately 2000 m.

### Snowpack

The old snowpack will be subject to considerable local variations. Only a little snow is lying on north and northeast facing slopes. Adjacent to ridgelines and in gullies and bowls mostly small wind slabs formed. On south facing slopes no snow is lying in all altitude zones.

### Tendency

As a consequence of fresh snow and strong wind the prevalence of avalanche prone locations will increase in the evening. In these regions above approximately 2000 m possibly danger level 2 (moderate) will be reached.

## Danger Level 1 - Low



**Tendency: Constant avalanche danger** →  
on Friday 15 03 2019



Wind-drifted  
snow



A generally favourable avalanche situation will prevail.

Avalanches can in isolated cases be released by large loads, but they will be small in most cases. This applies especially on steep shady slopes above approximately 2200 m. In particular in gullies and bowls, and behind abrupt changes in the terrain the wind slabs will increase in size moderately in the evening.

### Snowpack

Up to 5 cm of snow, and even more in some localities, will fall. The old snowpack will be subject to considerable local variations. Only a little snow is lying. Faceted weak layers exist in the bottom section of the old snowpack.

### Tendency

Low, level 1.