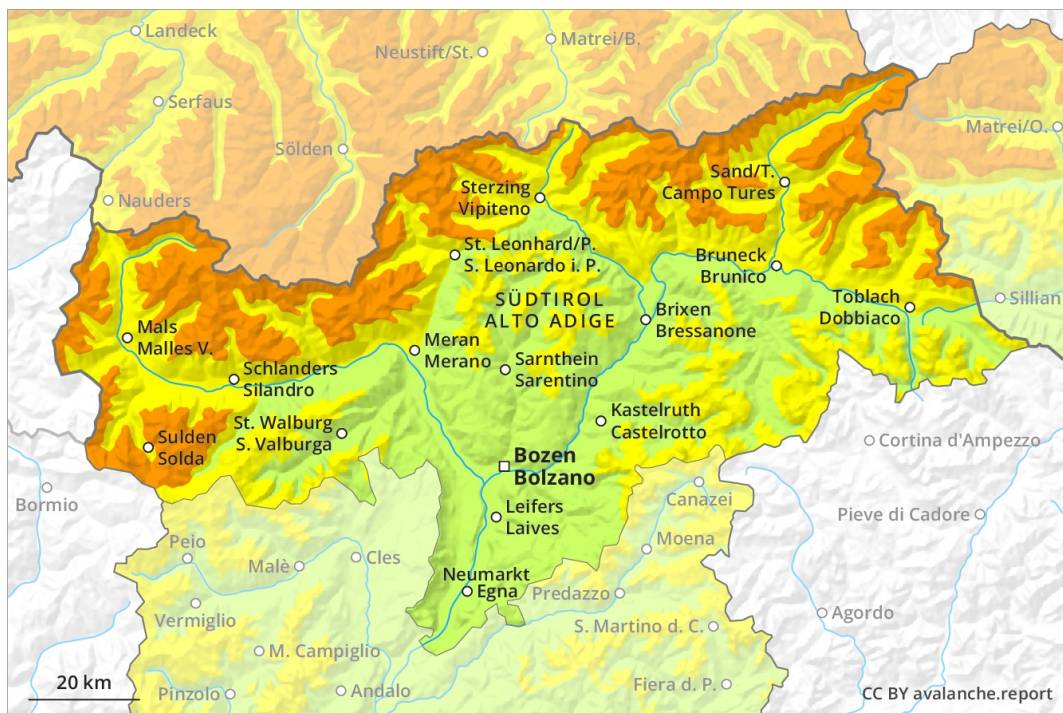
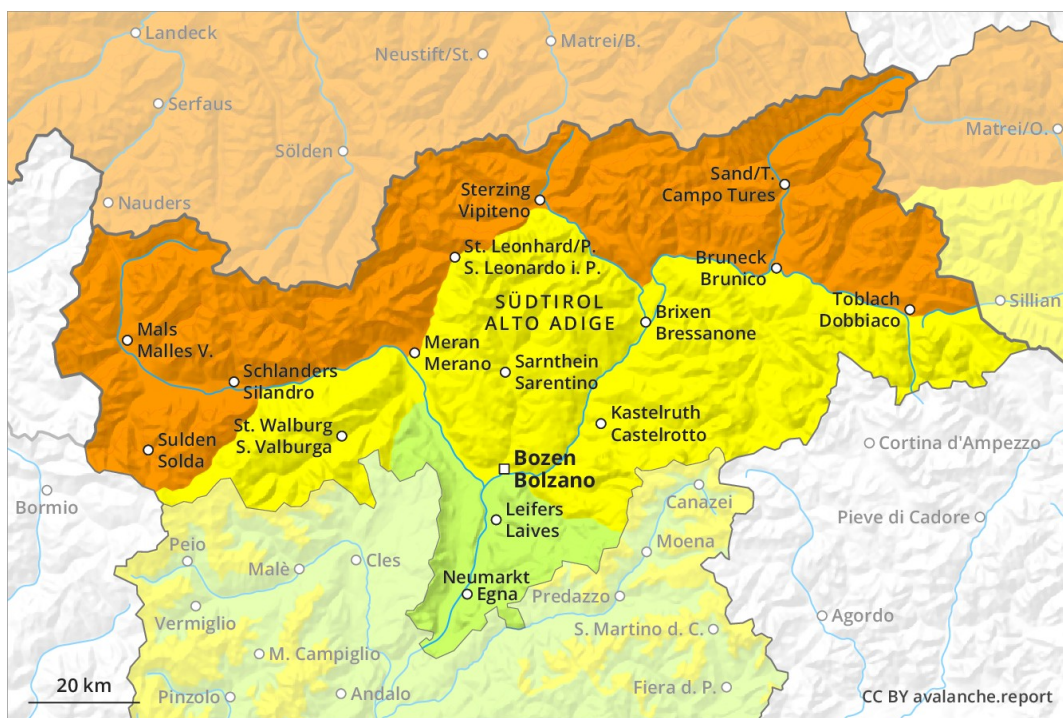


AM

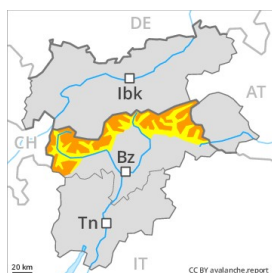


PM

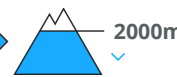


Danger Level 3 - Considerable

AM:



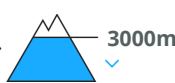
Tendency: Increasing avalanche danger
 on Monday 18 03 2019



PM:



Tendency: Increasing avalanche danger
 on Monday 18 03 2019



Fresh wind slabs require caution. Wet avalanches as the day progresses.

The fresh wind slabs must be evaluated with care and prudence in all aspects. Avalanches can in many places be released by a single winter sport participant and reach medium size. Caution is to be exercised in particular in gullies and bowls, and behind abrupt changes in the terrain. Gradual increase in danger of moist and wet avalanches as a consequence of warming during the day and solar radiation. The conditions are treacherous for backcountry touring and other off-piste activities.

Snowpack

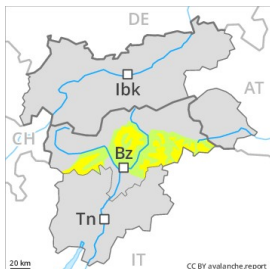
The southwesterly wind will transport the fresh snow. The fresh wind slabs can be released easily or naturally. They are in many cases extensive and prone to triggering. The old snowpack will be moist at low and intermediate altitudes.

Tendency

During the course of the night in all regions there will be an increase in the avalanche danger.

Danger Level 2 - Moderate

AM:



Tendency: Increasing avalanche danger
 on Monday 18 03 2019



Wind-drifted
 snow



Treeline

PM:



Tendency: Increasing avalanche danger
 on Monday 18 03 2019



Wet snow



3000m



Wind-drifted
 snow



Treeline

Fresh wind slabs require caution.

The wind slabs of the last two days are clearly recognisable to the trained eye. These are mostly shallow but in some cases prone to triggering. The avalanche prone locations are to be found in particular in places that are protected from the wind. In regions neighbouring those that are subject to danger level 3 (considerable) and at elevated altitudes avalanche prone locations are a little more prevalent and the danger is slightly greater. Slight increase in danger of moist and wet avalanches as a consequence of warming during the day.

Snowpack

The wind has transported only a little snow. Isolated avalanche prone weak layers exist in the bottom section of the old snowpack on shady slopes, in particular in areas close to the tree line in little used backcountry terrain. The snowpack will be moist at low and intermediate altitudes.

Tendency

During the course of the night as a consequence of the snowfall there will be an increase in the avalanche danger to level 3 (considerable).

Danger Level 1 - Low



Tendency: Increasing avalanche danger
on Monday 18 03 2019



Wind-drifted
snow



2200m

A generally favourable avalanche situation will prevail.

Avalanches can in isolated cases be released by large loads, but they will be small in most cases. This applies especially on steep shady slopes above approximately 2200 m. Especially in gullies and bowls, and behind abrupt changes in the terrain the wind slabs have increased in size moderately in the last few days.

Snowpack

The fresh wind slabs are mostly small but in some cases prone to triggering. The old snowpack will be subject to considerable local variations. Only a little snow is lying. Faceted weak layers exist in the bottom section of the old snowpack.

Tendency

During the course of the night probably danger level 2 (moderate) will be reached.