

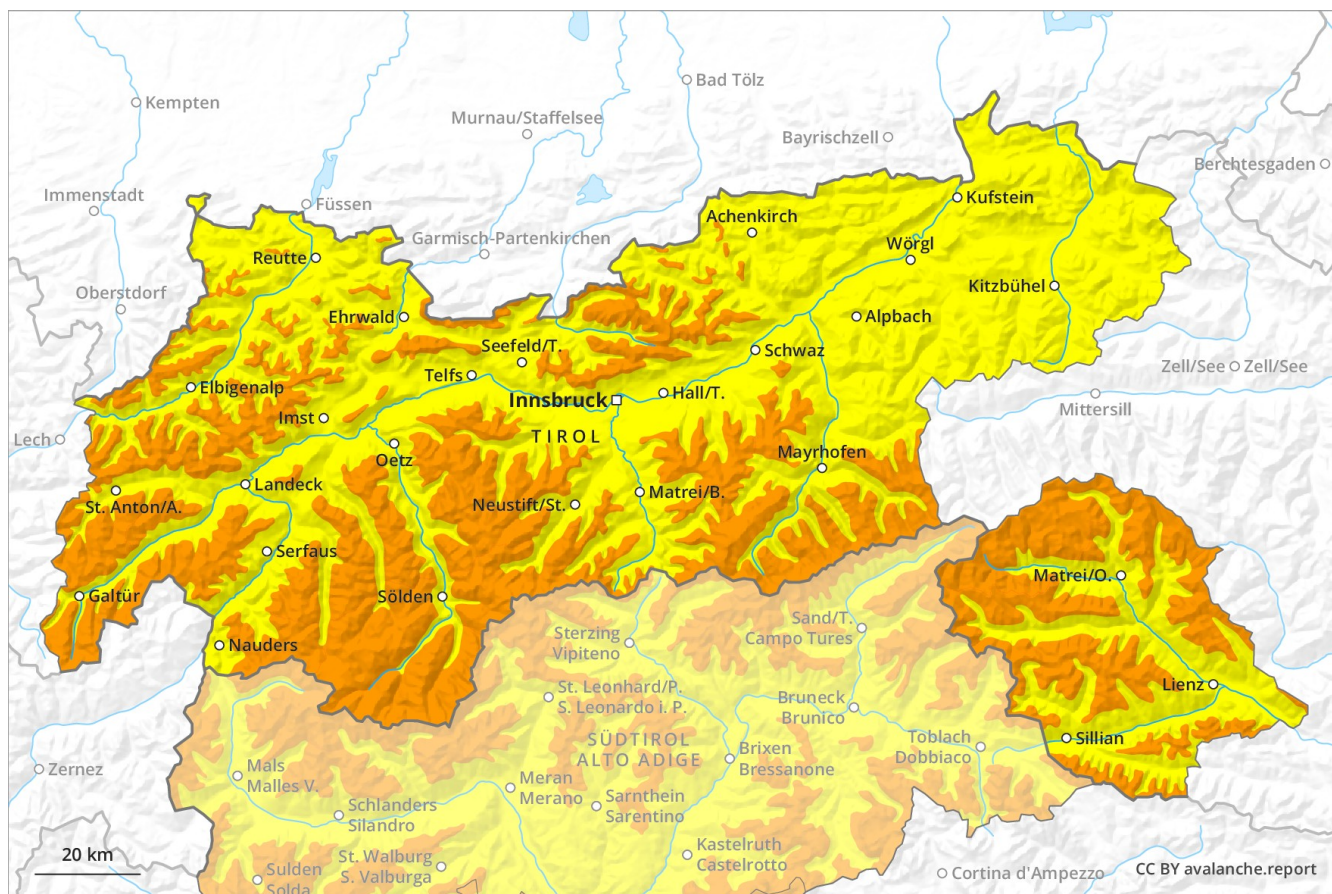
Avalanche Forecast

Monday 18 03 2019

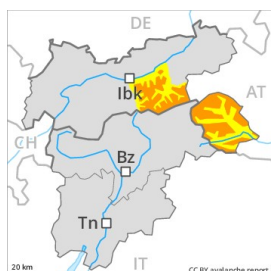
Published 17 03 2019, 17:00



Avalanche.report



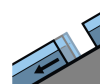
Danger Level 3 - Considerable



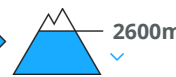
Tendency: Decreasing avalanche danger
on Tuesday 19 03 2019



Wind-drifted
snow



Gliding snow



Fresh wind slabs are prone to triggering.

As a consequence of fresh snow and a moderate northwesterly wind, avalanche prone wind slabs will form. The fresh wind slabs are in some cases thick and can be released easily. The avalanche prone locations are to be found especially on very steep shady slopes above approximately 2200 m. At elevated altitudes the likelihood of avalanches being released is greater. In high Alpine regions avalanche prone locations are more widespread and exist in all aspects. Caution is to be exercised in particular in gullies and bowls, and behind abrupt changes in the terrain. In addition a latent danger of gliding avalanches exists, in particular in the regions with a lot of snow. This applies on steep sunny slopes below approximately 2600 m as well as in all aspects below approximately 2200 m.
 Backcountry touring and other off-piste activities call for caution and restraint.

Snowpack

Danger patterns

dp 6: cold, loose snow and wind

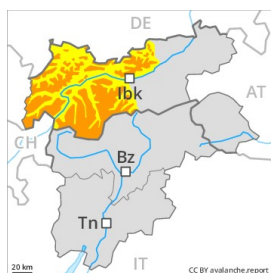
dp 2: gliding snow

Over a wide area 20 to 30 cm of snow, and up to 40 cm in some localities, will fall. The wind will be moderate. Fresh wind slabs are lying on soft layers on northwest to north to northeast facing aspects above approximately 2200 m. They are prone to triggering. The somewhat older wind slabs have bonded well with the old snowpack. The old snowpack will be stable over a wide area. The snowpack will be moist at low and intermediate altitudes, this also applies on sunny slopes.

Tendency

Decrease in danger of dry avalanches.

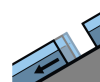
Danger Level 3 - Considerable



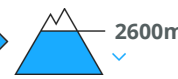
Tendency: Decreasing avalanche danger
on Tuesday 19 03 2019



Wind-drifted
snow



Gliding snow



Fresh wind slabs represent the main danger.

As a consequence of fresh snow and a moderate northwesterly wind, avalanche prone wind slabs will form. The fresh wind slabs are mostly rather small but can be released easily. The avalanche prone locations are to be found especially on very steep shady slopes above approximately 2200 m and adjacent to ridgelines and in pass areas. Caution is to be exercised in particular in gullies and bowls, and behind abrupt changes in the terrain. At elevated altitudes the likelihood of avalanches being released is greater. In addition a latent danger of gliding avalanches exists. This applies in particular on steep sunny slopes below approximately 2600 m as well as in all aspects below approximately 2200 m. Backcountry touring and other off-piste activities call for caution and restraint.

Snowpack

Danger patterns

dp 6: cold, loose snow and wind

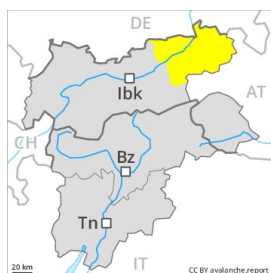
dp 2: gliding snow

Over a wide area 10 to 20 cm of snow, and even more in some localities, will fall. The wind will be moderate. Fresh wind slabs are lying on soft layers on northwest to north to northeast facing aspects above approximately 2200 m. They are prone to triggering. The somewhat older wind slabs have bonded quite well with the old snowpack. The old snowpack will be stable over a wide area. The snowpack will be moist at low and intermediate altitudes, this also applies on sunny slopes.

Tendency

Decrease in danger of dry avalanches.

Danger Level 2 - Moderate



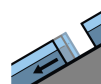
Tendency: Decreasing avalanche danger
 on Tuesday 19 03 2019



Wind-drifted
 snow



2200m



Gliding snow



Fresh wind slabs represent the main danger.

As a consequence of fresh snow and a moderate northwesterly wind, avalanche prone wind slabs will form. The fresh wind slabs are mostly rather small but can in some cases be released easily. Individual avalanche prone locations are to be found especially on very steep shady slopes above approximately 2200 m and adjacent to ridgelines and in pass areas. Caution is to be exercised in particular in gullies and bowls, and behind abrupt changes in the terrain. At elevated altitudes the likelihood of avalanches being released is greater. In places where more snow falls the avalanche danger is greater, in particular along the border with Salzburg. In addition a latent danger of gliding avalanches exists. This applies in particular on steep sunny slopes.

Snowpack

Danger patterns

dp 6: cold, loose snow and wind

dp 2: gliding snow

Over a wide area 10 to 20 cm of snow, and even more in some localities, will fall. The wind will be moderate. Fresh wind slabs are lying on soft layers on northwest to north to northeast facing aspects above approximately 2200 m. They are in some cases prone to triggering. The somewhat older wind slabs have bonded well with the old snowpack. The old snowpack will be stable over a wide area. The snowpack will be moist at low and intermediate altitudes, this also applies on sunny slopes.

Tendency

Decrease in danger of dry avalanches.