

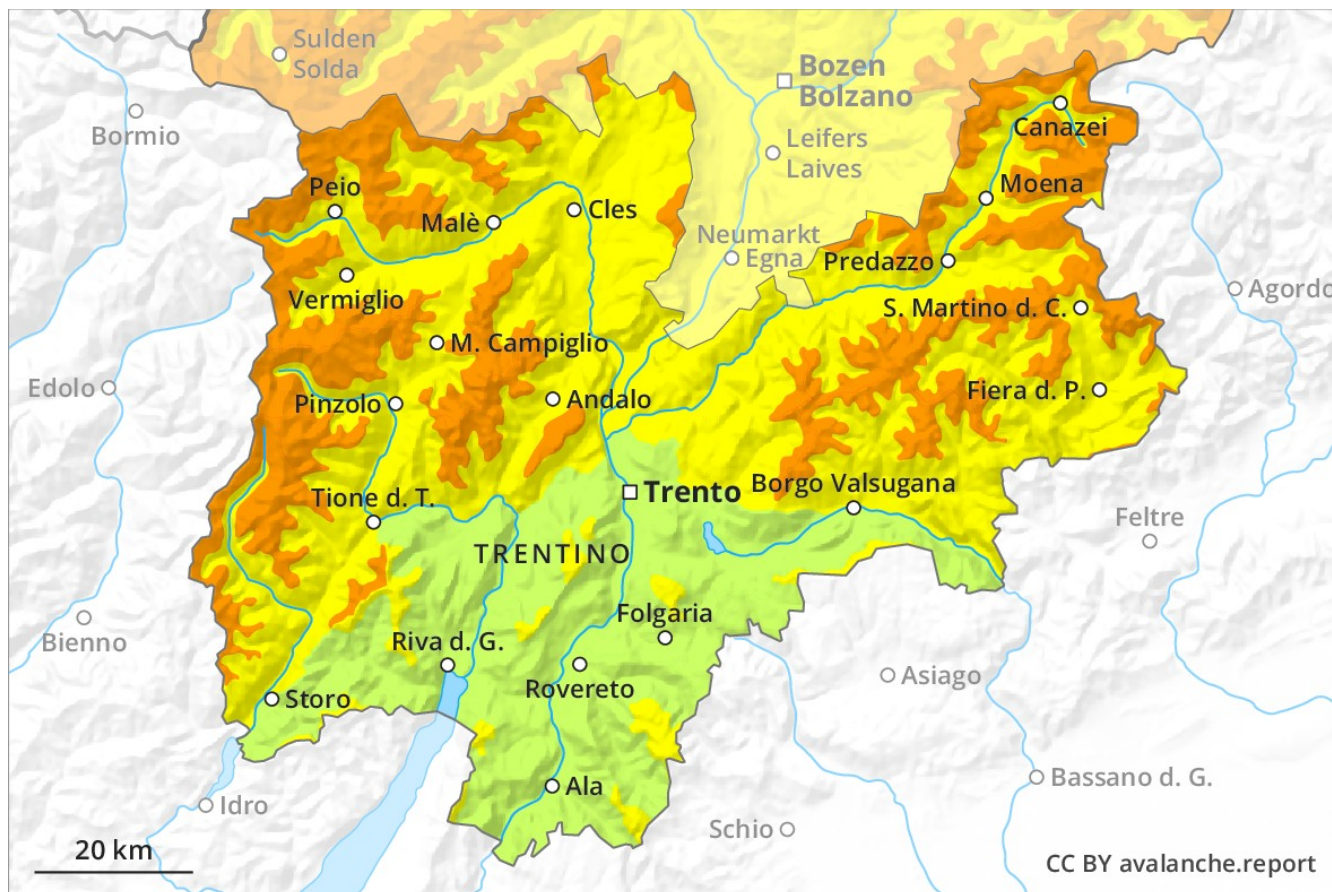
Avalanche Forecast

Monday 18 03 2019

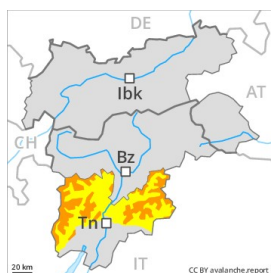
Published 17 03 2019, 21:41



Avalanche.report



Danger Level 3 - Considerable



Tendency: Constant avalanche danger →
on Tuesday 19 03 2019



New snow



Treeline



Wind-drifted
snow



Treeline

Increase in avalanche danger as a consequence of fresh snow and wind. Wind slabs require caution.

The fresh snow and wind slabs represent the main danger. In particular slopes adjacent to ridgelines are especially unfavourable. In addition the fresh wind slabs in gullies and bowls, and behind abrupt changes in the terrain are capable of being triggered in some locations. These can be released by small loads and reach medium size.

Snowpack

Danger patterns

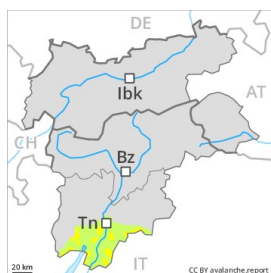
dp 6: cold, loose snow and wind

In some localities 10 to 20 cm of snow, and even more in some localities, will fall above approximately 1500 m. The fresh snow and wind slabs of Monday will be deposited on the unfavourable surface of an old snowpack in particular on west to north to northeast facing aspects above approximately 2000 m.

Tendency

The avalanche danger will persist.

Danger Level 2 - Moderate



Tendency: Constant avalanche danger →
on Tuesday 19 03 2019



New snow



Wind-drifted
snow



In all altitude zones a little snow is lying. In some localities increase in avalanche danger as a consequence of fresh snow and wind. Fresh wind slabs require caution.

The fresh snow and wind slabs of Monday will be deposited on the unfavourable surface of an old snowpack on steep shady slopes above approximately 1800 m. Gullies and bowls are especially precarious. Avalanches can be released by small loads, but they will be small in most cases.

Snowpack

In some localities 10 to 20 cm of snow will fall above approximately 1500 m. The fresh snow and wind slabs of Monday are to be evaluated with care and prudence in particular on steep shady slopes above approximately 1800 m.

Tendency

The avalanche danger will persist.