

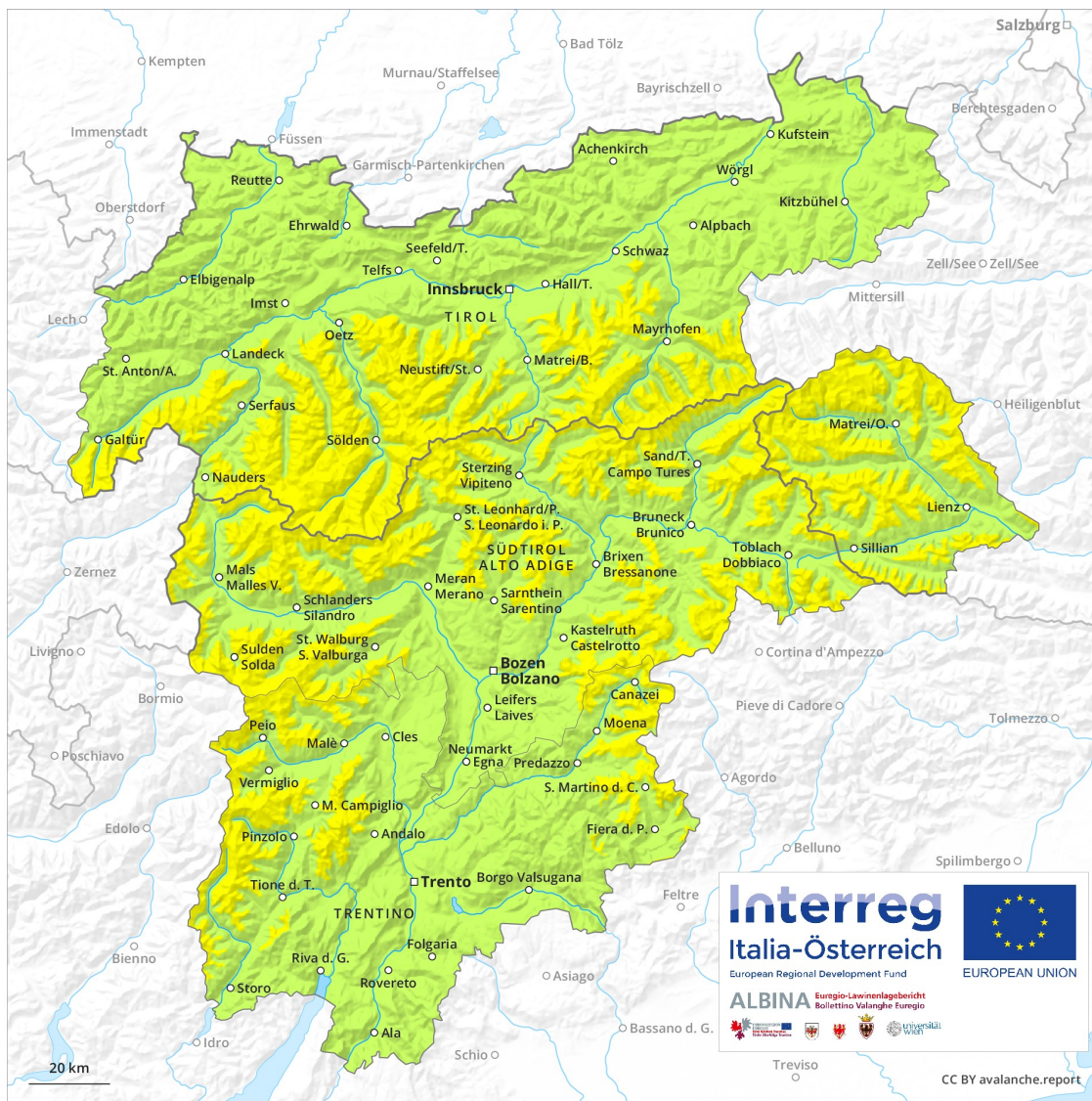
# Avalanche Forecast

## Wednesday 20 03 2019

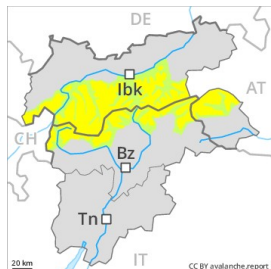
Published 19 03 2019, 17:11



Avalanche.report



## Danger Level Danger Level 2 - Moderate



**Tendency: Constant avalanche danger** →

on Thursday 21 03 2019



Wind-drifted  
snow



### Fresh wind slabs represent the main danger.

The snow sport conditions outside marked and open pistes are favourable over a wide area. The fresh wind slabs of the last few days must be evaluated with care and prudence in particular on northwest to north to northeast facing aspects at high altitudes and in high Alpine regions. The fresh wind slabs can in some places be released, even by a single winter sport participant and reach medium size. The avalanche prone locations are to be found in particular in gullies and bowls, and behind abrupt changes in the terrain. The prevalence of avalanche prone locations and likelihood of triggering will increase with altitude. As a consequence of the solar radiation, the likelihood of moist loose snow avalanches being released will increase a little in particular on extremely steep sunny slopes. A latent danger of gliding avalanches exists, in particular on steep sunny slopes. Apart from the danger of being buried, restraint should be exercised as well in view of the danger of avalanches sweeping people along and giving rise to falls.

### Snowpack

**Danger patterns**

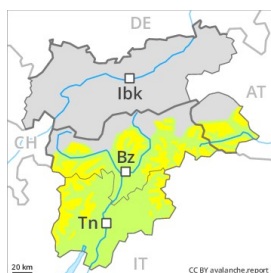
dp 6: cold, loose snow and wind

The fresh wind slabs are lying on soft layers on northwest to north to northeast facing aspects above approximately 2500 m. The old snowpack will be moist at low and intermediate altitudes. The old snowpack will be stable over a wide area.

### Tendency

Slight increase in danger of moist and wet avalanches as a consequence of warming during the day and solar radiation. Decrease in danger of dry avalanches.

## Danger Level Danger Level 2 - Moderate



**Tendency: Constant avalanche danger** →

on Thursday 21 03 2019



Wind-drifted  
snow



### Fresh wind slabs represent the main danger.

The snow sport conditions outside marked and open pistes are favourable over a wide area. The fresh wind slabs of the last few days must be evaluated with care and prudence in particular on northwest to north to northeast facing aspects at high altitudes and in high Alpine regions. The fresh wind slabs can in some places be released, even by a single winter sport participant and reach medium size. The avalanche prone locations are to be found in particular in gullies and bowls, and behind abrupt changes in the terrain. The prevalence of avalanche prone locations and likelihood of triggering will increase with altitude. As a consequence of the solar radiation, the likelihood of moist loose snow avalanches being released will increase a little in particular on extremely steep sunny slopes. Apart from the danger of being buried, restraint should be exercised as well in view of the danger of avalanches sweeping people along and giving rise to falls.

### Snowpack

#### Danger patterns

dp 6: cold, loose snow and wind

The fresh wind slabs are lying on soft layers in particular on northwest to north to northeast facing aspects above approximately 2500 m. The old snowpack will be moist at low and intermediate altitudes. The old snowpack will be stable over a wide area.

### Tendency

Slight increase in danger of moist and wet avalanches as a consequence of warming during the day and solar radiation. Decrease in danger of dry avalanches.

## Danger Level Danger Level 1 - Low



**Tendency: Constant avalanche danger** →  
on Thursday 21 03 2019



Wind-drifted  
snow



Fresh wind slabs require caution. Slight increase in danger as a consequence of warming during the day and solar radiation.

The snow sport conditions outside marked and open pistes are favourable. The fresh wind slabs represent the main danger. They can in very isolated cases be released by small loads, but they will be small in most cases. Restraint should be exercised because avalanches can sweep people along and give rise to falls. The avalanche prone locations are to be found in particular on very steep northeast, north and northwest facing slopes above approximately 2500 m, especially adjacent to ridgelines and in pass areas. They are clearly recognisable to the trained eye.

As a consequence of warming during the day and solar radiation individual moist loose snow avalanches are possible.

In addition a latent danger of gliding avalanches exists. This applies in particular on steep sunny slopes.

### Snowpack

#### Danger patterns

dp 6: cold, loose snow and wind

dp 2: gliding snow

Fresh wind slabs are lying on soft layers on northwest to north to northeast facing aspects above approximately 2500 m. They are in individual cases still prone to triggering. The old snowpack will be stable over a wide area.

### Tendency

The avalanche conditions are favourable.