

# Avalanche Forecast

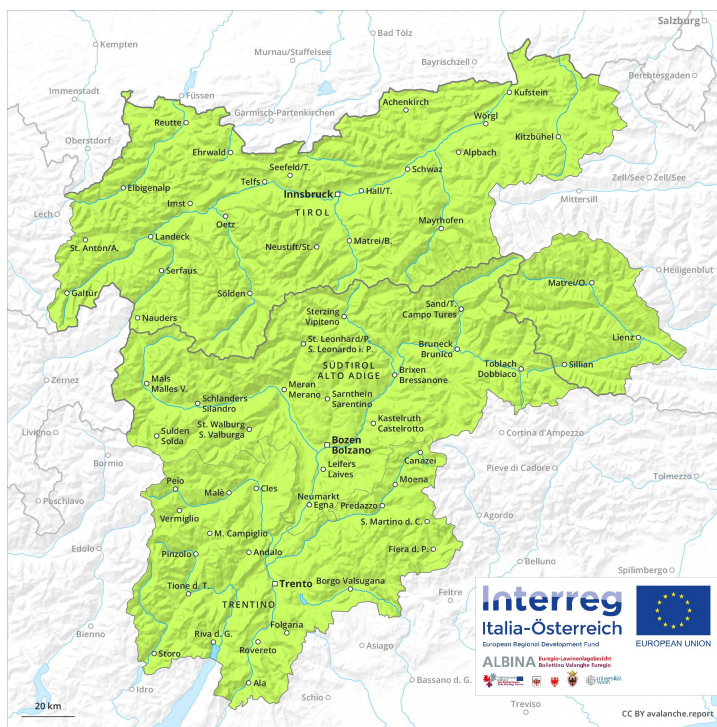
## Monday 25 03 2019

Published 24 03 2019, 17:00

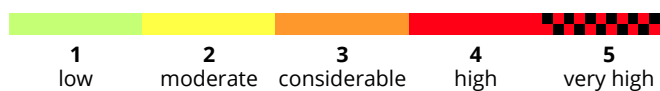
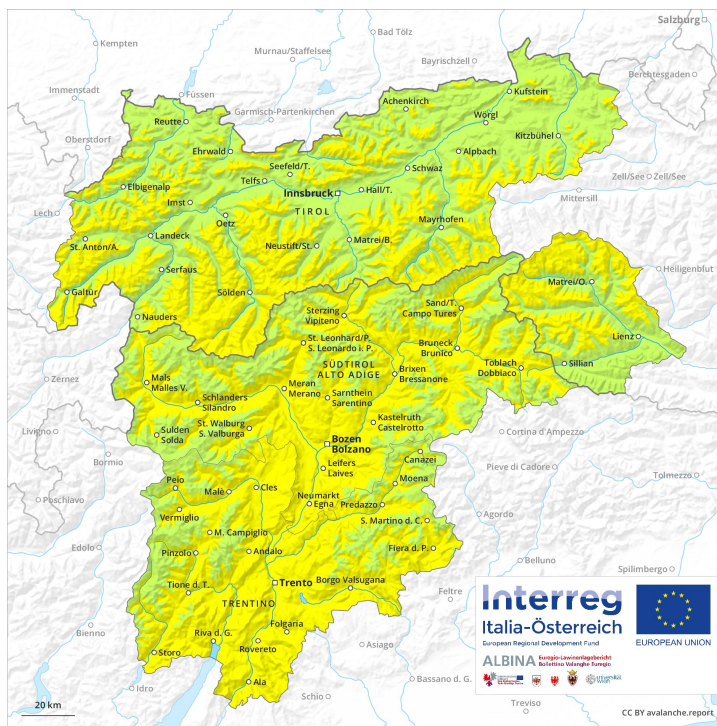


Avalanche.report

### AM



### PM



## Danger Level Danger Level 2 - Moderate

**AM:**



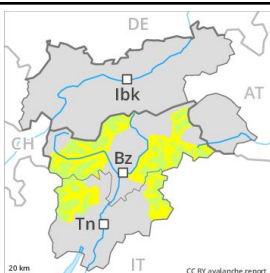
**Tendency: Constant avalanche danger** →  
 on Tuesday 26 03 2019



Wind-drifted  
 snow



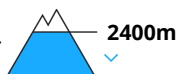
**PM:**



**Tendency: Constant avalanche danger** →  
 on Tuesday 26 03 2019



Wet snow



The backcountry and freeriding conditions in the morning, after a clear night, are favourable. Increase in danger of wet snow slides as a consequence of warming during the day and solar radiation.

The avalanche conditions are spring-like. In the late morning a low avalanche danger will be encountered over a wide area. Fresh wind slabs can be released in isolated cases on very steep shady slopes above approximately 3000 m, especially adjacent to ridgelines and in pass areas. The avalanche prone locations are easy to recognise. Restraint should be exercised because avalanches can sweep people along and give rise to falls. In steep terrain there is a danger of falling on the hard snow surface.

Midday and afternoon: As a consequence of warming and solar radiation a moderate danger of wet snow slides will be encountered in some regions. The avalanche prone locations are to be found in all aspects at low altitude and on very steep sunny slopes below approximately 2400 m.

### Snowpack

**Danger patterns**

dp 10: springtime scenario

dp 2: gliding snow

The surface of the snowpack will freeze to form a strong crust and will soften during the day. This applies on sunny slopes below approximately 2400 m as well as in all aspects at low altitude. Fresh wind slabs are lying on soft layers on northwest to north to northeast facing aspects above approximately 3000 m. They are in individual cases still prone to triggering. The old snowpack will be stable over a wide area.

### Tendency

The avalanche conditions are favourable.

## Danger Level Danger Level 2 - Moderate

**AM:**



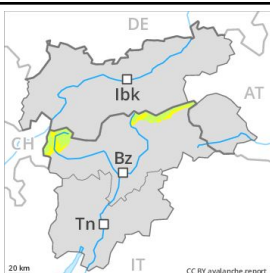
**Tendency: Constant avalanche danger** →  
 on Tuesday 26 03 2019



Wind-drifted snow



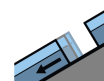
**PM:**



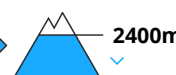
**Tendency: Constant avalanche danger** →  
 on Tuesday 26 03 2019



Wet snow



Gliding snow



The backcountry and freeriding conditions in the morning, after a clear night, are favourable. Increase in danger of gliding avalanches and wet snow slides as a consequence of warming during the day and solar radiation.

The avalanche conditions are spring-like. In the late morning a low avalanche danger will be encountered over a wide area. Fresh wind slabs can be released in isolated cases on very steep shady slopes above approximately 3000 m, especially adjacent to ridgelines and in pass areas. The avalanche prone locations are easy to recognise. Restraint should be exercised because avalanches can sweep people along and give rise to falls. In steep terrain there is a danger of falling on the hard snow surface.

Midday and afternoon: As a consequence of warming and solar radiation a moderate danger of gliding avalanches and wet snow slides will be encountered in some regions. The avalanche prone locations are to be found in all aspects at low altitude and on very steep sunny slopes below approximately 2400 m.

### Snowpack

**Danger patterns**

dp 10: springtime scenario

dp 2: gliding snow

The surface of the snowpack will freeze to form a strong crust and will soften during the day. This applies on sunny slopes below approximately 2400 m as well as in all aspects at low altitude. Fresh wind slabs are lying on soft layers on northwest to north to northeast facing aspects above approximately 3000 m. They are in individual cases still prone to triggering. The old snowpack will be stable over a wide area.

### Tendency

The avalanche conditions are favourable.

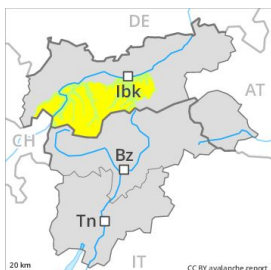
## Danger Level Danger Level 2 - Moderate

**AM:**



**Tendency: Constant avalanche danger** →  
 on Tuesday 26 03 2019

**PM:**



**Tendency: Constant avalanche danger** →  
 on Tuesday 26 03 2019



Wind-drifted  
 snow



### Fresh wind slabs require caution.

The early morning will see favourable conditions generally.

As a consequence of fresh snow and a strengthening wind from northwesterly directions, mostly small wind slabs will form as the day progresses in particular adjacent to ridgelines and in gullies and bowls. The avalanche prone locations for dry avalanches are to be found in particular on very steep northwest, north and east facing slopes above approximately 2000 m. The fresh wind slabs can in some places be released by a single winter sport participant. The number and size of avalanche prone locations will increase as the day progresses. At elevated altitudes avalanche prone locations are more prevalent.

In addition a latent danger of gliding avalanches exists, especially on steep sunny slopes below approximately 2600 m.

### Snowpack

**Danger patterns**

dp 6: cold, loose snow and wind

dp 2: gliding snow

The surface of the snowpack will freeze to form a strong crust. This applies during the first half of the night, in particular on steep sunny slopes below approximately 2500 m as well as in all aspects at low altitude.

5 to 15 cm of snow will fall. The wind will be moderate to strong. The weather will be cold. Fresh wind slabs are lying on soft layers in particular on northwest to north to northeast facing aspects above approximately 2000 m. Afternoon: The fresh wind slabs are lying on soft layers in all aspects. This applies adjacent to ridgelines at high altitudes and in high Alpine regions in places that are protected from the wind.

The somewhat older wind slabs have bonded well with the old snowpack. The old snowpack will be wet all the way through. This applies on steep sunny slopes below approximately 2500 m as well as in all aspects at low altitude.

### Tendency

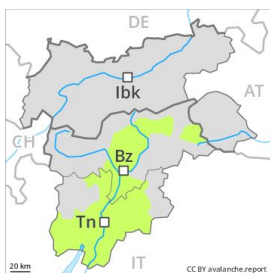


The backcountry and freeriding conditions are generally favourable. Fresh wind slabs require caution.



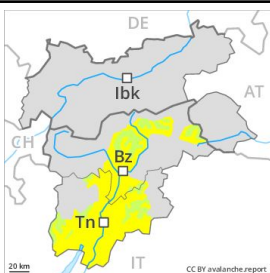
## Danger Level Danger Level 2 - Moderate

**AM:**



**Tendency: Constant avalanche danger** →  
 on Tuesday 26 03 2019

**PM:**



**Tendency: Constant avalanche danger** →  
 on Tuesday 26 03 2019



Wet snow



The backcountry and freeriding conditions in the morning, after a clear night, are favourable. Increase in danger of moist and wet snow slides as a consequence of warming during the day and solar radiation.

The avalanche conditions are spring-like. In the late morning a low avalanche danger will be encountered over a wide area. In steep terrain there is a danger of falling on the hard snow surface.

Midday and afternoon: As a consequence of warming and solar radiation a moderate danger of moist and wet snow slides will be encountered in some regions. The avalanche prone locations are to be found in all aspects at low altitude and on very steep sunny slopes below approximately 2400 m.

### Snowpack

**Danger patterns**

dp 10: springtime scenario

The surface of the snowpack will freeze to form a strong crust and will soften during the day. This applies on sunny slopes below approximately 2400 m as well as in all aspects at low altitude. The old snowpack will be stable over a wide area.

### Tendency

The avalanche conditions are favourable.



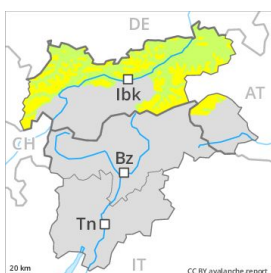
## Danger Level Danger Level 2 - Moderate

**AM:**



**Tendency: Constant avalanche danger** →  
 on Tuesday 26 03 2019

**PM:**



**Tendency: Constant avalanche danger** →  
 on Tuesday 26 03 2019



Wind-drifted  
 snow



### Fresh wind slabs require caution.

The early morning will see favourable conditions generally.

As a consequence of fresh snow and a strengthening wind from northwesterly directions, sometimes large wind slabs will form as the day progresses in particular adjacent to ridgelines and in gullies and bowls. The avalanche prone locations for dry avalanches are to be found in particular on very steep northwest, north and east facing slopes above approximately 2000 m. The fresh wind slabs can in some places be released by a single winter sport participant. The number and size of avalanche prone locations will increase as the day progresses. At elevated altitudes avalanche prone locations are more prevalent.

In addition a latent danger of gliding avalanches exists, especially on steep sunny slopes below approximately 2600 m.

### Snowpack

**Danger patterns**

dp 6: cold, loose snow and wind

dp 2: gliding snow

The surface of the snowpack will freeze to form a strong crust. This applies during the first half of the night, in particular on steep sunny slopes below approximately 2500 m as well as in all aspects at low altitude.

15 to 25 cm of snow, and even more in some localities, will fall. The wind will be moderate to strong. The weather will be cold. Fresh wind slabs are lying on soft layers in particular on northwest to north to northeast facing aspects above approximately 2000 m. Afternoon: The fresh wind slabs are lying on soft layers in all aspects. This applies adjacent to ridgelines at high altitudes and in high Alpine regions in places that are protected from the wind.

The somewhat older wind slabs have bonded well with the old snowpack. The old snowpack will be wet all the way through. This applies on steep sunny slopes below approximately 2500 m as well as in all aspects at low altitude.



## Tendency

The backcountry and freeriding conditions are generally favourable. Fresh wind slabs require caution.





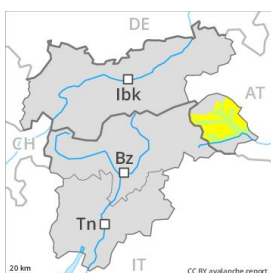
## Danger Level Danger Level 2 - Moderate

**AM:**



**Tendency: Constant avalanche danger** →  
 on Tuesday 26 03 2019

**PM:**



**Tendency: Constant avalanche danger** →  
 on Tuesday 26 03 2019



Wind-drifted  
 snow



### Fresh wind slabs require caution.

The early morning will see favourable conditions generally. As a consequence of a strengthening wind from northwesterly directions, mostly small wind slabs will form as the day progresses in particular adjacent to ridgelines and in gullies and bowls. The avalanche prone locations for dry avalanches are to be found in particular on very steep northwest, north and northeast facing slopes above approximately 2000 m. The fresh wind slabs can in some places be released by a single winter sport participant. The number and size of avalanche prone locations will increase as the day progresses. At elevated altitudes avalanche prone locations are more prevalent.

### Snowpack

**Danger patterns**

dp 6: cold, loose snow and wind

The surface of the snowpack will freeze to form a strong crust. This applies on steep sunny slopes below approximately 2500 m as well as in all aspects at low altitude.

The wind will be moderate to strong. The weather will be cold. Fresh wind slabs are lying on soft layers in particular on northwest to north to northeast facing aspects above approximately 2000 m.

The somewhat older wind slabs have bonded well with the old snowpack. The old snowpack will be wet all the way through. This applies on steep sunny slopes below approximately 2500 m as well as in all aspects at low altitude.

### Tendency

The backcountry and freeriding conditions are generally favourable. Fresh wind slabs require caution.

## Danger Level Danger Level 1 - Low



**Tendency: Constant avalanche danger** →  
on Tuesday 26 03 2019



Wind-drifted  
snow



### Fresh wind slabs require caution.

Currently there are favourable conditions over a wide area. As a consequence of a strengthening wind from northwesterly directions, small wind slabs will form as the day progresses in particular adjacent to ridgelines and in gullies and bowls. The avalanche prone locations for dry avalanches are to be found in particular on very steep northwest, north and northeast facing slopes above approximately 2000 m. The fresh wind slabs can in isolated cases be released by a single winter sport participant. At elevated altitudes avalanche prone locations are more prevalent.

### Snowpack

#### Danger patterns

dp 6: cold, loose snow and wind

The surface of the snowpack will freeze to form a strong crust. This applies on steep sunny slopes below approximately 2500 m as well as in all aspects at low altitude.

The wind will be moderate to strong. The weather will be cold. Fresh wind slabs are lying on soft layers in particular on northwest to north to northeast facing aspects above approximately 2000 m.

The somewhat older wind slabs have bonded well with the old snowpack. The old snowpack will be wet all the way through. This applies on steep sunny slopes below approximately 2500 m as well as in all aspects at low altitude.

### Tendency

The backcountry and freeriding conditions are generally favourable. Fresh wind slabs require caution.