

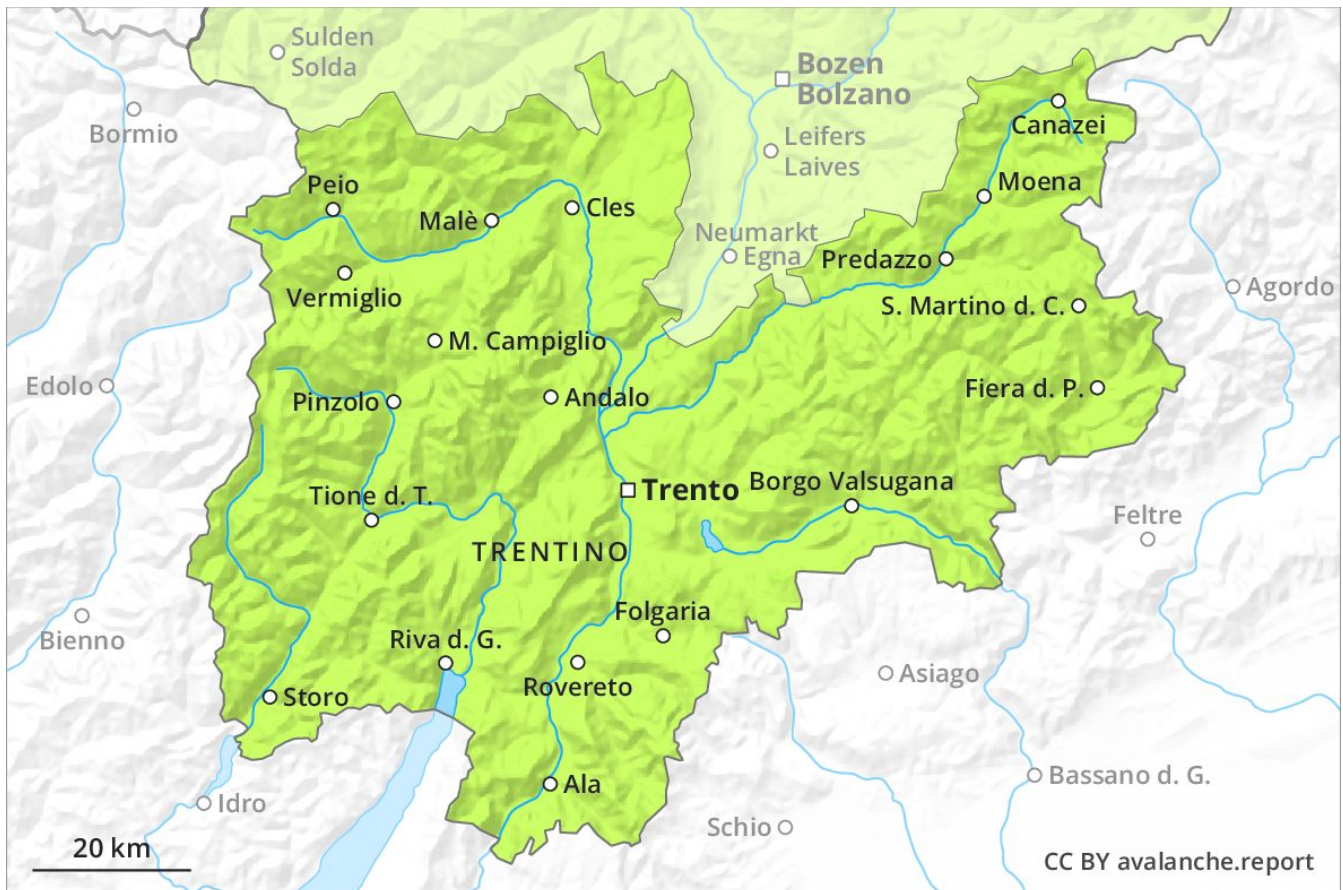
Avalanche Forecast

Tuesday 26 03 2019

Published 25 03 2019, 17:00



Avalanche.report



Danger Level Danger Level 1 - Low



Tendency: Constant avalanche danger →
on Wednesday 27 03 2019



Wind-drifted
snow



2000m



Persistent
weak layer



2000m

The violent wind will transport only a little snow.

Currently there are favourable conditions over a wide area. As a consequence of a strengthening wind from northwesterly directions, mostly shallow wind slabs will form as the day progresses in particular adjacent to ridgelines and in gullies and bowls. The fresh wind slabs can in isolated cases be released by a single winter sport participant. Restraint should be exercised because avalanches can sweep people along and give rise to falls. Avalanche prone weak layers exist deep in the old snowpack in particular on shady slopes. Avalanches can be released in the weakly bonded old snow, mostly by large additional loads in isolated cases. The avalanche prone locations are to be found in particular on steep northwest, north and northeast facing slopes above approximately 2000 m. At elevated altitudes avalanche prone locations are more prevalent.

Snowpack

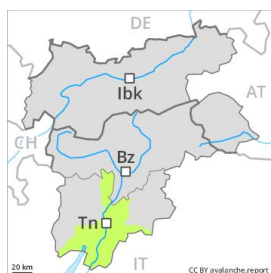
The surface of the snowpack will freeze to form a strong crust.

The wind will be moderate to strong. The weather will be cold. The mostly shallow wind slabs are to be evaluated with care and prudence in particular in extremely steep terrain.

Tendency

The backcountry and freeriding conditions are generally favourable. Fresh wind slabs require caution.

Danger Level Danger Level 1 - Low

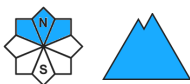


Tendency: Constant avalanche danger →

on Wednesday 27 03 2019



Persistent
weak layer



In the Etschtal and in neighbouring regions hardly any snow is lying on northwest and northeast facing slopes.

From a snow sport perspective, insufficient snow is lying.

The avalanche conditions are spring-like. In the late morning a low avalanche danger will be encountered over a wide area. In steep terrain there is a danger of falling on the hard snow surface.

Midday and afternoon: As a consequence of warming and solar radiation a low danger of moist and wet snow slides will be encountered in some regions.

Snowpack

The surface of the snowpack will freeze to form a strong crust and will soften during the day.

Tendency

The avalanche conditions are favourable.