

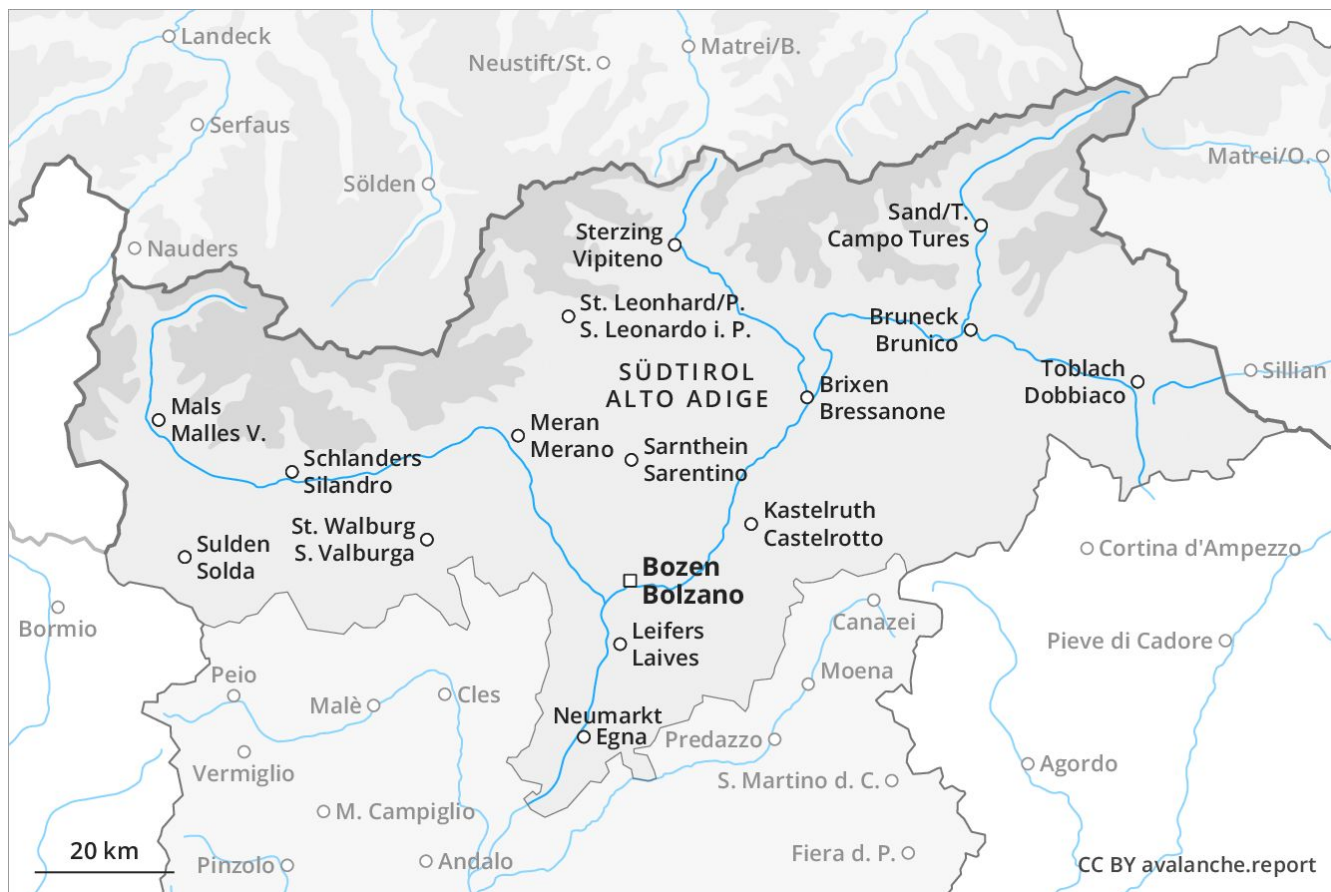
Avalanche Forecast

Wednesday 27 03 2019

Published 26 03 2019, 17:00

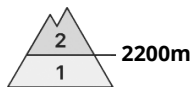
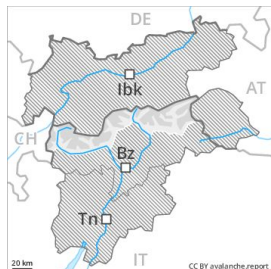


Avalanche.report





Danger Level 2 - Moderate



Tendency: Decreasing avalanche danger
on Thursday 28 03 2019



Wind-drifted
snow



Fresh wind slabs require caution.

Fresh wind slabs can be released in isolated cases above approximately 2200 m, in particular adjacent to ridgelines and in gullies and bowls. The avalanche prone locations are easy to recognise. Restraint should be exercised because avalanches can sweep people along and give rise to falls. In steep terrain there is a danger of falling on the hard snow surface. As a consequence of solar radiation individual dry and moist avalanches are possible as the day progresses, but they will be mostly small.

Snowpack

Danger patterns

dp 6: cold, loose snow and wind

The sometimes storm force wind has transported the fresh and old snow. Fresh wind slabs are clearly recognisable. Over a wide area wind slabs are lying on a hard crust. The old snowpack will be generally stable.

Tendency

The avalanche conditions are favourable.



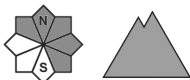
Danger Level 1 - Low



Tendency: Constant avalanche danger →
on Thursday 28 03 2019



Wind-drifted
snow



The northerly wind has transported only a little snow.

Fresh wind slabs can be released in isolated cases in all aspects above approximately 2200 m, especially adjacent to ridgelines and in pass areas. The avalanche prone locations are easy to recognise. Restraint should be exercised because avalanches can sweep people along and give rise to falls. In steep terrain there is a danger of falling on the hard snow surface.

Snowpack

Danger patterns

dp 10: springtime scenario

The weather will be cold. The surface of the snowpack will freeze to form a strong crust and will hardly soften at all. This applies on steep sunny slopes below approximately 2800 m. The old snowpack will be in most cases stable.

Tendency

The avalanche conditions are favourable.