

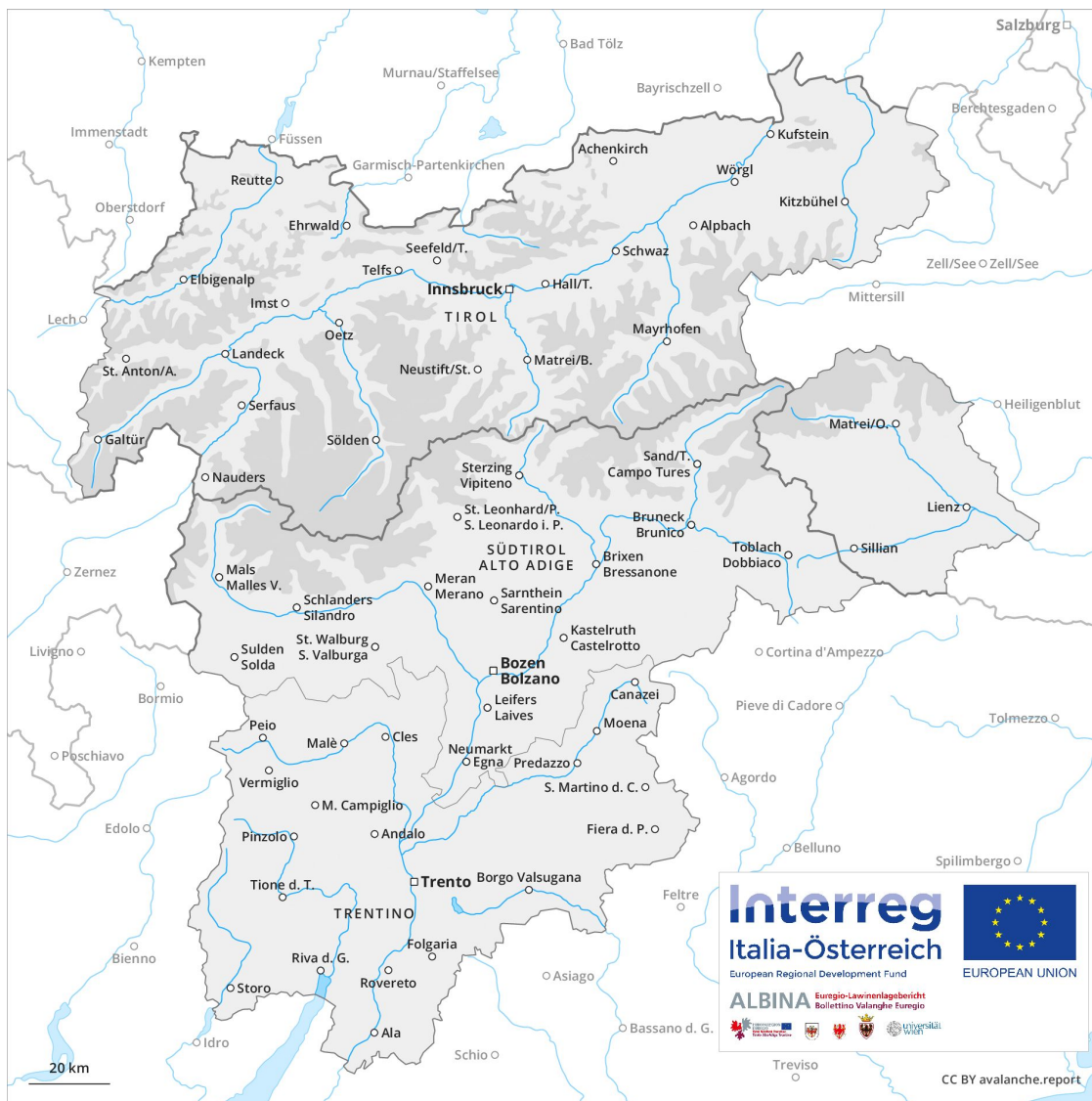
Avalanche Forecast

Wednesday 27 03 2019

Published 26 03 2019, 17:00

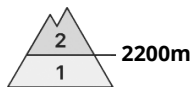
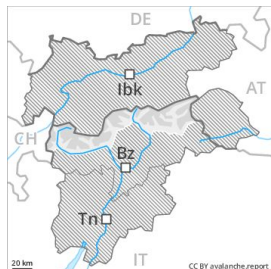


Avalanche.report





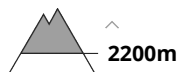
Danger Level 2 - Moderate



Tendency: Decreasing avalanche danger
on Thursday 28 03 2019



Wind-drifted
snow



Fresh wind slabs require caution.

Fresh wind slabs can be released in isolated cases above approximately 2200 m, in particular adjacent to ridgelines and in gullies and bowls. The avalanche prone locations are easy to recognise. Restraint should be exercised because avalanches can sweep people along and give rise to falls. In steep terrain there is a danger of falling on the hard snow surface. As a consequence of solar radiation individual dry and moist avalanches are possible as the day progresses, but they will be mostly small.

Snowpack

Danger patterns

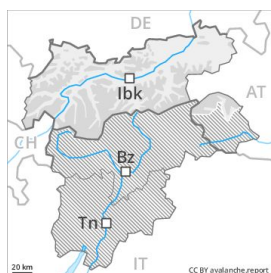
dp 6: cold, loose snow and wind

The sometimes storm force wind has transported the fresh and old snow. Fresh wind slabs are clearly recognisable. Over a wide area wind slabs are lying on a hard crust. The old snowpack will be generally stable.

Tendency

The avalanche conditions are favourable.

Danger Level 2 - Moderate



Tendency: Constant avalanche danger →
on Thursday 28 03 2019



Wind-drifted
snow



Fresh wind slabs require caution.

As a consequence of fresh snow and a sometimes strong wind from northwesterly directions, sometimes avalanche prone wind slabs formed since Monday in particular adjacent to ridgelines and in gullies and bowls. The fresh wind slabs can in some places be released by a single winter sport participant and reach medium size, in particular in the regions exposed to heavier precipitation. The avalanche prone locations are to be found in particular in northwest to north to east facing aspects above approximately 2200 m. The prevalence of avalanche prone locations and likelihood of triggering will increase with altitude. In high Alpine regions the avalanche prone locations are to be found in all aspects, especially adjacent to ridgelines.

As the moisture increases more frequent small and, in isolated cases, medium-sized loose snow avalanches are to be expected. This applies on extremely steep sunny slopes, in the event of solar radiation especially.

Snowpack

Danger patterns

dp 6: cold, loose snow and wind

Over a wide area 10 to 20 cm of snow, and even more in some localities, fell, especially along the border with Vorarlberg and along the border with Bavaria. The wind was strong in some cases. Over a wide area fresh snow is lying on a hard crust. This applies on steep sunny slopes below approximately 2800 m as well as in all aspects at low and intermediate altitudes. In steep terrain there is a danger of falling here. Fresh wind slabs are lying on soft layers in particular on steep shady slopes above approximately 2200 m. They are in some cases prone to triggering. The old snowpack will be generally stable.

Tendency

Fresh wind slabs represent the main danger.



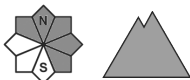
Danger Level 1 - Low



Tendency: Constant avalanche danger →
on Thursday 28 03 2019



Wind-drifted
snow



The northerly wind has transported only a little snow.

Fresh wind slabs can be released in isolated cases in all aspects above approximately 2200 m, especially adjacent to ridgelines and in pass areas. The avalanche prone locations are easy to recognise. Restraint should be exercised because avalanches can sweep people along and give rise to falls. In steep terrain there is a danger of falling on the hard snow surface.

Snowpack

Danger patterns

dp 10: springtime scenario

The weather will be cold. The surface of the snowpack will freeze to form a strong crust and will hardly soften at all. This applies on steep sunny slopes below approximately 2800 m. The old snowpack will be in most cases stable.

Tendency

The avalanche conditions are favourable.

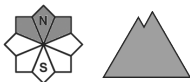
Danger Level 1 - Low



Tendency: Constant avalanche danger →
on Thursday 28 03 2019



Persistent
weak layer



In the Etschtal and in neighbouring regions hardly any snow is lying on northwest and northeast facing slopes.

From a snow sport perspective, insufficient snow is lying.

The avalanche conditions are spring-like. In the late morning a low avalanche danger will be encountered over a wide area. In steep terrain there is a danger of falling on the hard snow surface.

Midday and afternoon: As a consequence of warming and solar radiation a low danger of moist and wet snow slides will be encountered in some regions.

Snowpack

The surface of the snowpack will freeze to form a strong crust and will soften during the day.

Tendency

The avalanche conditions are favourable.

Danger Level 1 - Low



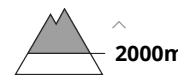
Tendency: Constant avalanche danger →
 on Thursday 28 03 2019



Wind-drifted
 snow



Persistent
 weak layer



The violent wind will transport only a little snow.

Currently there are favourable conditions over a wide area. As a consequence of a strengthening wind from northwesterly directions, mostly shallow wind slabs will form as the day progresses in particular adjacent to ridgelines and in gullies and bowls. The fresh wind slabs can in isolated cases be released by a single winter sport participant. Restraint should be exercised because avalanches can sweep people along and give rise to falls. Avalanche prone weak layers exist deep in the old snowpack in particular on shady slopes. Avalanches can be released in the weakly bonded old snow, mostly by large additional loads in isolated cases. The avalanche prone locations are to be found in particular on steep northwest, north and northeast facing slopes above approximately 2000 m. At elevated altitudes avalanche prone locations are more prevalent.

Snowpack

The surface of the snowpack will freeze to form a strong crust.

The wind was moderate to strong. The weather was cold. The mostly shallow wind slabs are to be evaluated with care and prudence in particular in extremely steep terrain.

Tendency

The backcountry and freeriding conditions are generally favourable. Fresh wind slabs require caution.

Danger Level 1 - Low



Tendency: Constant avalanche danger →
on Thursday 28 03 2019



Wind-drifted
snow



2200m

A generally favourable avalanche situation will prevail. Fresh wind slabs require caution.

As a consequence of a moderate to strong wind from northwesterly directions, sometimes avalanche prone wind slabs formed since Monday. The fresh wind slabs can in some places be released by a single winter sport participant, but they will be small in most cases. The avalanche prone locations are to be found in particular adjacent to ridgelines and in gullies and bowls in northwest to north to northeast facing aspects above approximately 2200 m. The prevalence of avalanche prone locations and likelihood of triggering will increase with altitude. Restraint should be exercised because avalanches can sweep people along and give rise to falls.

Snowpack

Danger patterns

dp 6: cold, loose snow and wind

The wind will be moderate to strong. The weather will be cold. The surface of the snowpack has frozen to form a strong crust. This applies on steep sunny slopes below approximately 2800 m as well as in all aspects at low and intermediate altitudes. In steep terrain there is a danger of falling here. The surface of the snowpack will hardly soften at all. Fresh wind slabs are lying on soft layers in particular on steep shady slopes above approximately 2200 m. They are in some cases prone to triggering. The old snowpack will be stable over a wide area.

Tendency

The backcountry and freeriding conditions are generally favourable. Fresh wind slabs require caution.