

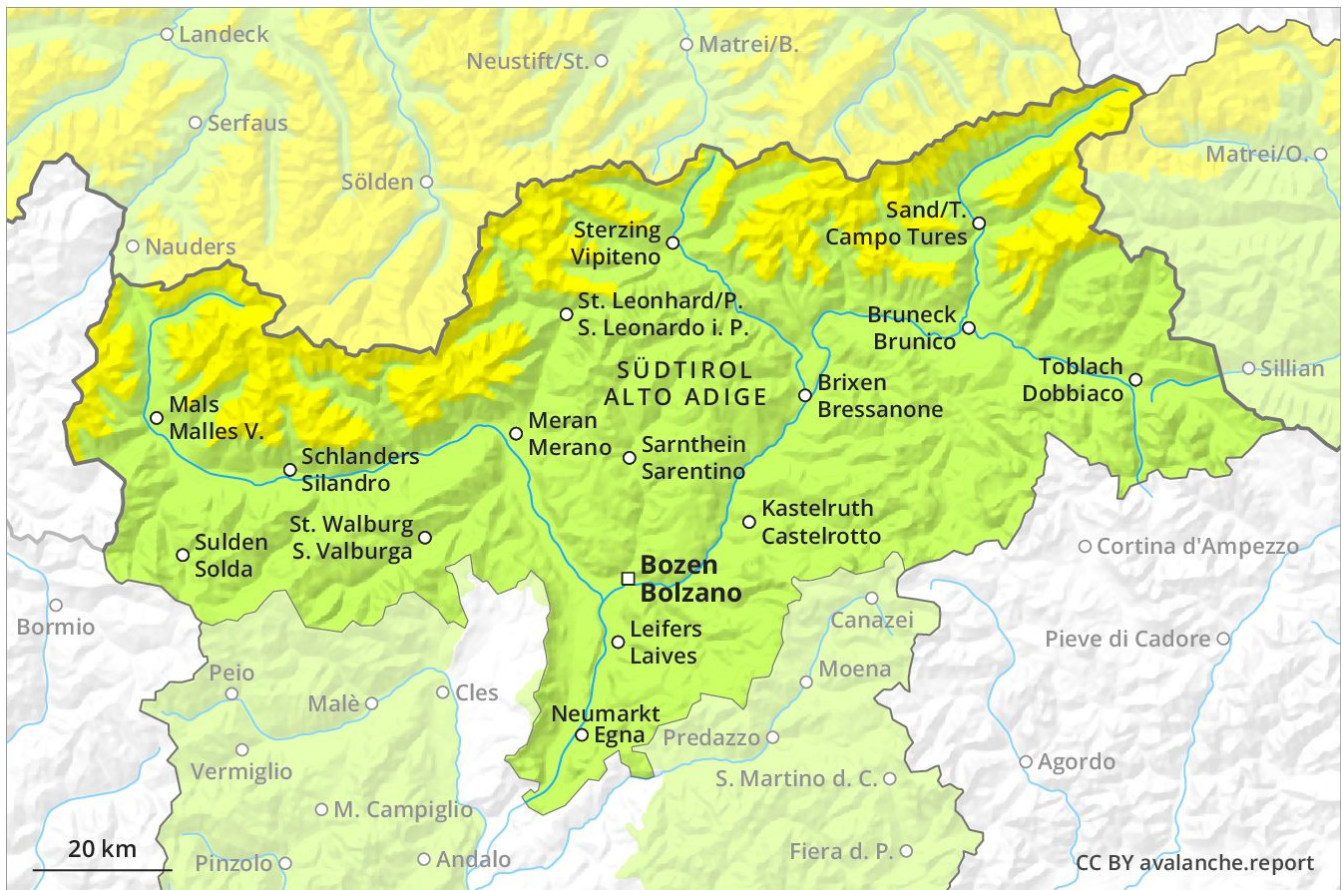
Avalanche Forecast

Thursday 28 03 2019

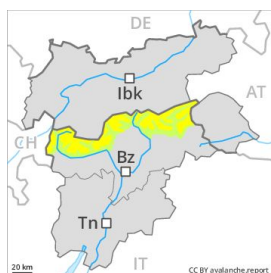
Published 27 03 2019, 17:00



Avalanche.report



Danger Level 2 - Moderate



Tendency: Decreasing avalanche danger
on Friday 29 03 2019



Wind-drifted
snow



Wind slabs especially in gullies and bowls, and behind abrupt changes in the terrain.

Fresh wind slabs can be released in isolated cases above approximately 2200 m, in particular adjacent to ridgelines and in gullies and bowls. The prevalence of avalanche prone locations and likelihood of triggering will increase with altitude. They are easy to recognise. Restraint should be exercised because avalanches can sweep people along and give rise to falls. In steep terrain there is a danger of falling on the hard snow surface. As a consequence of solar radiation individual dry and moist avalanches are possible as the day progresses, but they will be mostly small.

Snowpack

Danger patterns

dp 6: cold, loose snow and wind

The sometimes storm force wind has transported the fresh and old snow. Fresh wind slabs are clearly recognisable. Over a wide area wind slabs are lying on a hard crust. The old snowpack will be generally stable.

Tendency

The avalanche conditions are favourable.

Danger Level 1 - Low



Tendency: Constant avalanche danger →
on Friday 29 03 2019



Wind-drifted
snow



2200m

The weather will be mostly sunny.

Fresh wind slabs can be released in isolated cases in particular on northwest to north to southeast facing aspects above approximately 2200 m, especially adjacent to ridgelines and in pass areas. The avalanche prone locations are easy to recognise. Restraint should be exercised because avalanches can sweep people along and give rise to falls. In steep terrain there is a danger of falling on the hard snow surface. A clear night will be followed in the early morning by favourable conditions, but the danger of wet avalanches will increase later.

Snowpack

Danger patterns

dp 10: springtime scenario

The weather will be mostly sunny. The surface of the snowpack will freeze to form a strong crust and will soften during the day. This applies on steep sunny slopes below approximately 2800 m. In some cases relatively hard layers of snow are lying on a weakly bonded old snowpack.

Tendency

The avalanche conditions are favourable.